

**REFERENCE PLAN OF ROAD  
DEDICATION THROUGH PARCEL A,  
D. L. s 1530 AND 2608,  
CARIBOO DISTRICT, PLAN PGP42492**

**PLAN BCP**

12109

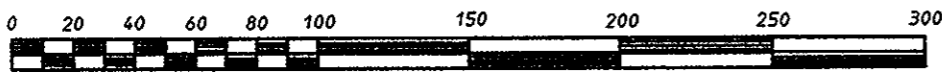
Deposited in the Land Title Office  
at New Westminster, B.C.  
this 9 day of July, 2004.

Registrar

BW315237

Pursuant to Section 107 of the Land Title Act

SCALE 1: 2500



LEGEND B. C. G. S. 93G. 096

Grid bearings are derived from observations between control monuments 86H1771 and 86H1772, Integrated Survey Area Number 39, City of Prince George, of Prince George, NAD83 (CSRS)

This plan shows ground-level measured distances. Prior to computation of U. T. M. coordinates multiply by combined factor of 0.99950725.

- Standard Iron Post Found
- Standard Iron Post Set
- ⊙ Standard Capped Post Found
- ⊙ Integrated Survey Area Control Monument

BT bearings are magnetic.  
All distances are in metres unless otherwise indicated.

BOOK OF REFERENCE	
DESCRIPTION	AREA
PARCEL A, D. L. s 1530 & 2608, PLAN PGP42492	2.72 ha.

OWNER: THE CITY OF PRINCE GEORGE

Authorized Signatory

*Colin Kinsley*  
Print Name

Authorized Signatory

*Jane Radloff*  
Print Name

Witness as to both signatures

*JUDY DIX*  
Print Name

City Hall, Prince George,  
Witness' Address

Exec. Assistant.  
Witness' Occupation

Approved under the Land Title Act  
this 6th day of July, 2004.

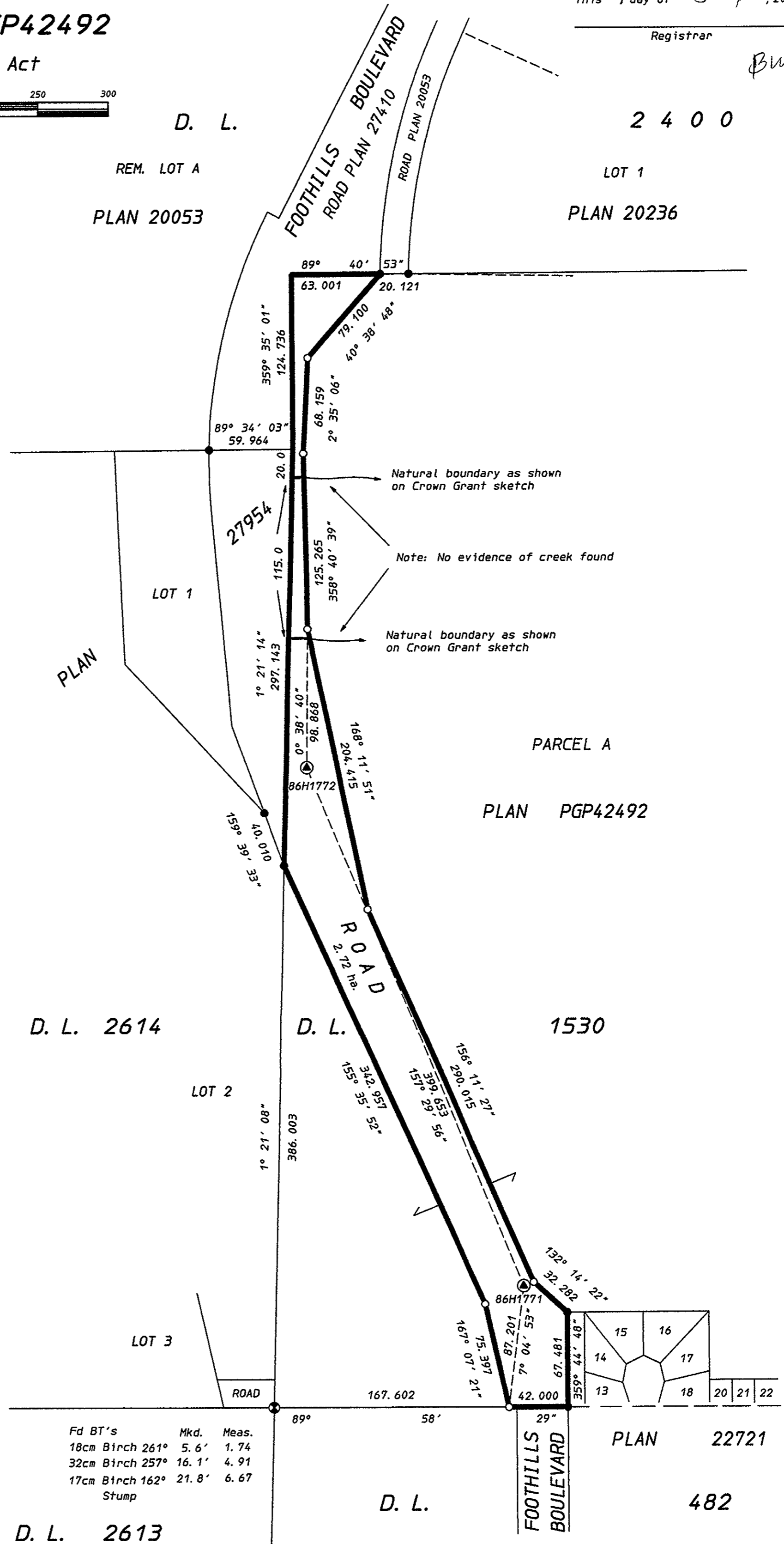
*Fraser D. Simpson*  
Approving Officer, The City of Prince George

This plan lies within the Fraser-Fort George Regional District.

**R. E. GOOK & ASSOCIATES  
B. C. & CANADA LANDS SURVEYORS**

691 FRONT STREET \* 886 VANCOUVER STREET  
QUESNEL, B. C. V2J 2K9 PRINCE GEORGE, B. C. V2L 2P5  
PHONE: 992-2424 PHONE: 564-4242  
FAX: 992-3434 FAX: 564-5343

FILE: 04-0416PG (B)



Fd BT's	Mkd.	Meas.
18cm Birch 261°	5.6'	1.74
32cm Birch 257°	16.1'	4.91
17cm Birch 162°	21.8'	6.67

Stump

I, Gary R. Lesieur, a British Columbia land surveyor, of the city of Prince George, in British Columbia, certify that I was present at and personally superintended the survey represented by this plan, and that the survey and plan are correct. The field survey was completed on the 21st day of May, 2004. The plan was completed and checked, and the checklist filed under ECP-16752 on the 15th day of June, 2004.

*G. R. Lesieur* B. C. L. S.

original