

EXPLANATORY PLAN TO
 ACCOMPANY CITY OF PRINCE
 GEORGE BY LAW No.7411,
 CLOSING LANE IN BLOCK 17,
 PLAN 701, DISTRICT LOT 934,
 CARIBOO DISTRICT.

PLAN NO. BCP 01181

Deposited in the Land Title Office at New
 Westminster this 16 day of Sept, 2001.

Pursuant to Section 120 of
 the Land Title Act.

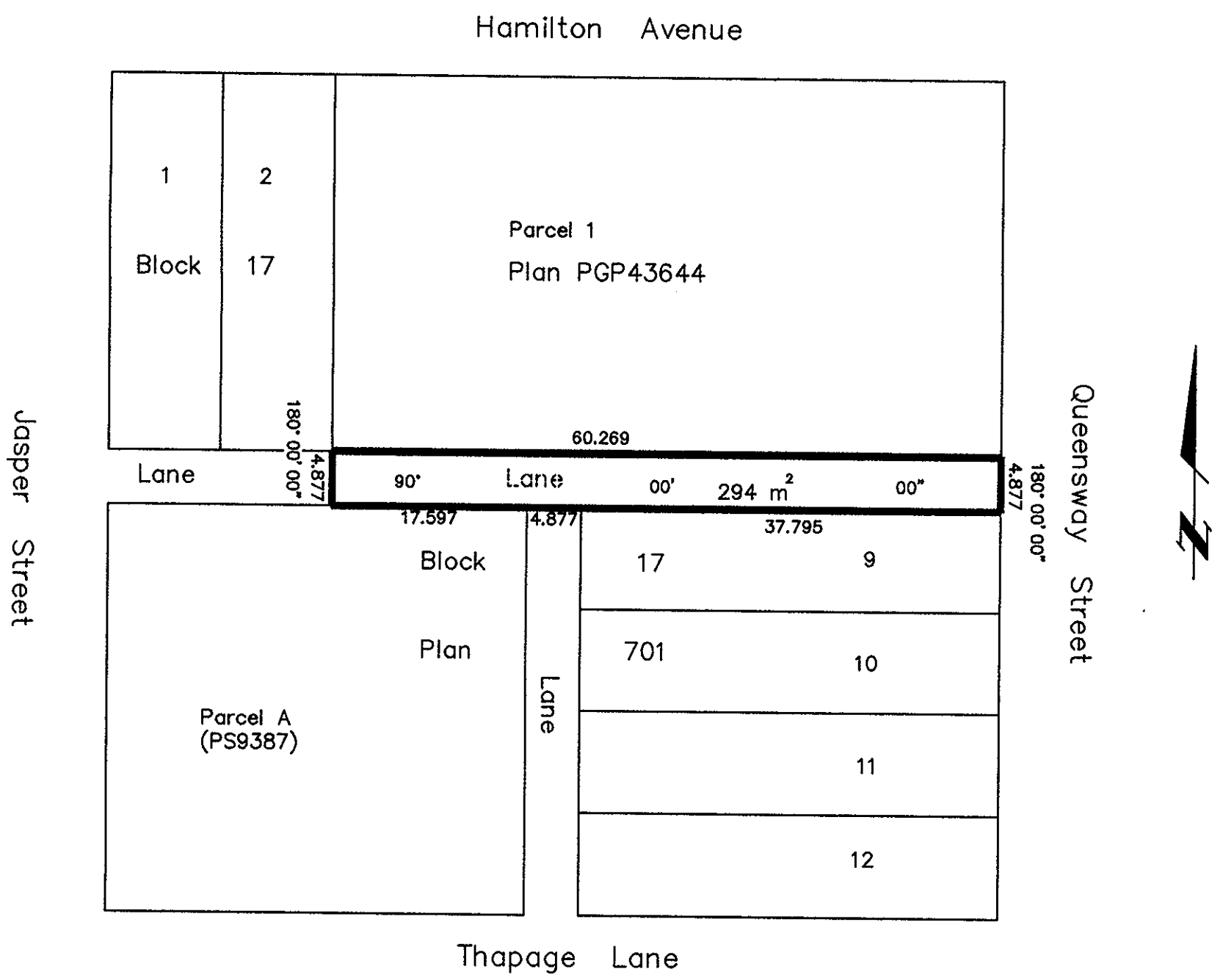
REGISTRAR

B.C.G.S. 93G.097

Scale: 1 : 500 (Distances are in metres)



Bearing from Plan PGP43644 is rotated
 0°06'41" clockwise to match Plan 701



Certified Correct, according to
 Land Title Office Records.
 This 14th day of December, 2001.

This plan lies within the Fraser-Fort
 George Regional District.

Gordon Kilbride
 Gordon Kilbride, B.C.L.S.

KILBRIDE LAND SURVEYING LTD.
 British Columbia Land Surveyors
 Prince George, B.C.
 Ph: (250) 562-1196 Fax: 562-3656

| | | |
|------|----------|-------------------|
| F.B. | D.L. 934 | File No. 010246L2 |
|------|----------|-------------------|