

REFERENCE PLAN OF EASEMENT AND RESTRICTIVE COVENANTS OVER BLOCKS F AND G, DISTRICT LOT 913, CARIBOO DISTRICT. Pursuant to Section 99 (1) (e) of the Land Title Act. B.C.G.S. 93G.087

PLAN NO. BCP 11017

Deposited in the Land Title Office at New Westminster this 11 day of MAY 2004.

Bw 197870

REGISTRAR

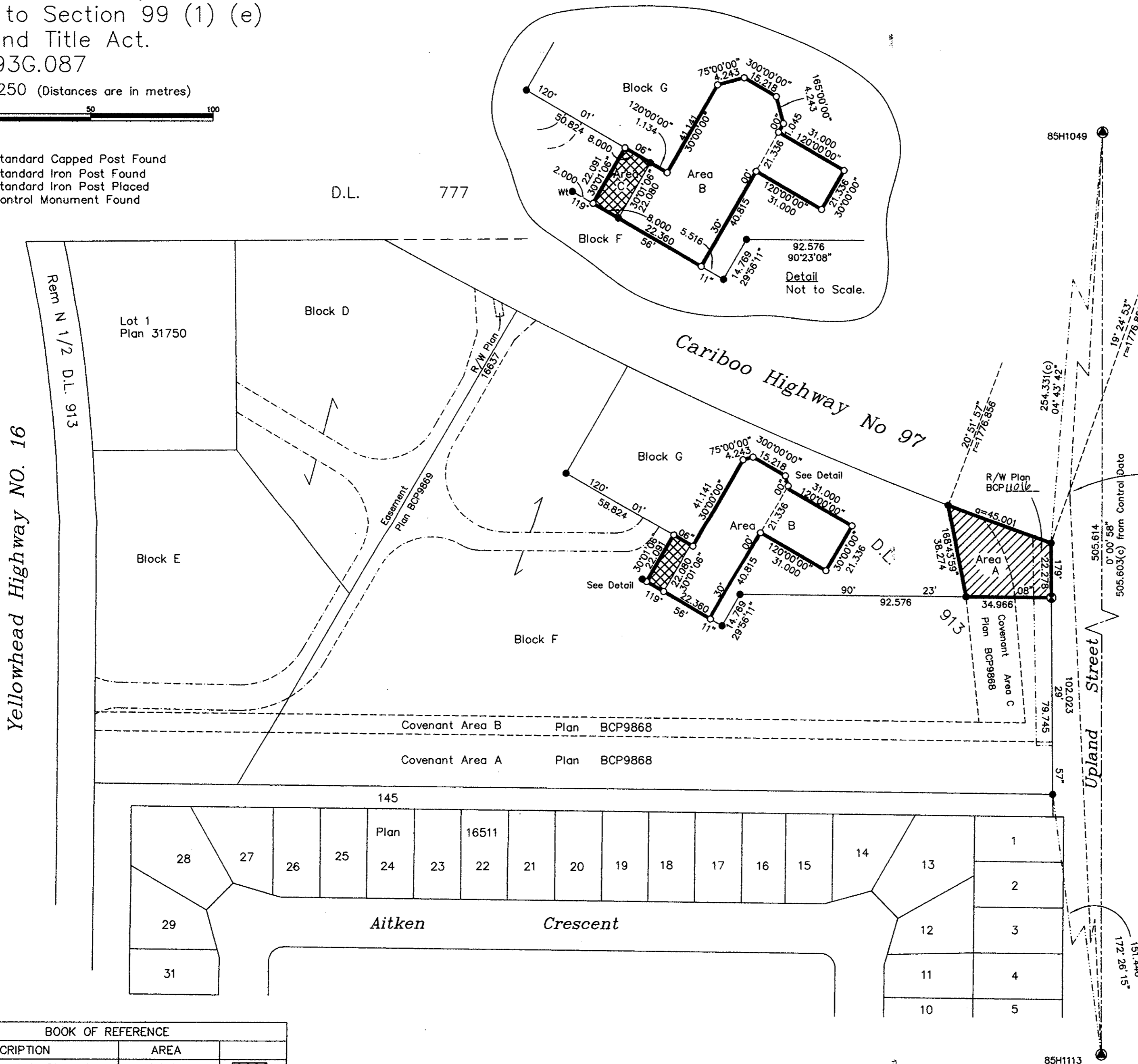
Scale: 1 : 1250 (Distances are in metres)



LEGEND

- Standard Capped Post Found
- Standard Iron Post Found
- Standard Iron Post Placed
- Control Monument Found

D.L. 777



Monument 85H1342 buried under asphalt

Grid bearings are derived from observations between control monuments 85H113 and 85H1049 integrated survey area number 39, City of Prince George, B.C. NAD83(CSRS)

Note: This plan shows ground level measured distances. Prior to computation of U.T.M. co-ordinates multiply by the combined factor 0.9995130

I, Gordon Kilbride, a British Columbia Land Surveyor, of Prince George, in British Columbia, certify that I was present at and personally supervised the survey represented by this plan, and that the survey and plan are correct. The field survey was completed on the 5 day of April, 2004. The plan was completed and checked, and the checklist filed under #14288, on the 23 day of April, 2004.

*Gordon Kilbride*  
Gordon Kilbride, B.C.L.S.

This plan lies within the Fraser-Fort George Regional District.

BOOK OF REFERENCE		
DESCRIPTION	AREA	
Covenant Area A in Block G	0.112 ha	
Covenant Area B in Block G	0.208 ha	
Covenant Area C in Block F	176.7 m <sup>2</sup>	

<b>KILBRIDE LAND SURVEYING LTD.</b> British Columbia Land Surveyors Prince George, B.C. Ph: (250) 562-1196 Fax: 562-3656		
F.B.- RA	D.L.- 913	File No. - 030238C2