

REFERENCE PLAN OF STATUTORY
RIGHT OF WAY THROUGH PART OF
BLOCKS F AND G, DISTRICT LOT 913,
CARIBOO DISTRICT.
Pursuant to Section 113 of the
Land Title Act
B.C.G.S. 93G.087

PLAN NO. BCP 11016

Deposited in the Land Title Office at New
Westminster this 11 day of May 2004.

BW197866

REGISTRAR

Scale: 1 : 2000 (Distances are in metres)

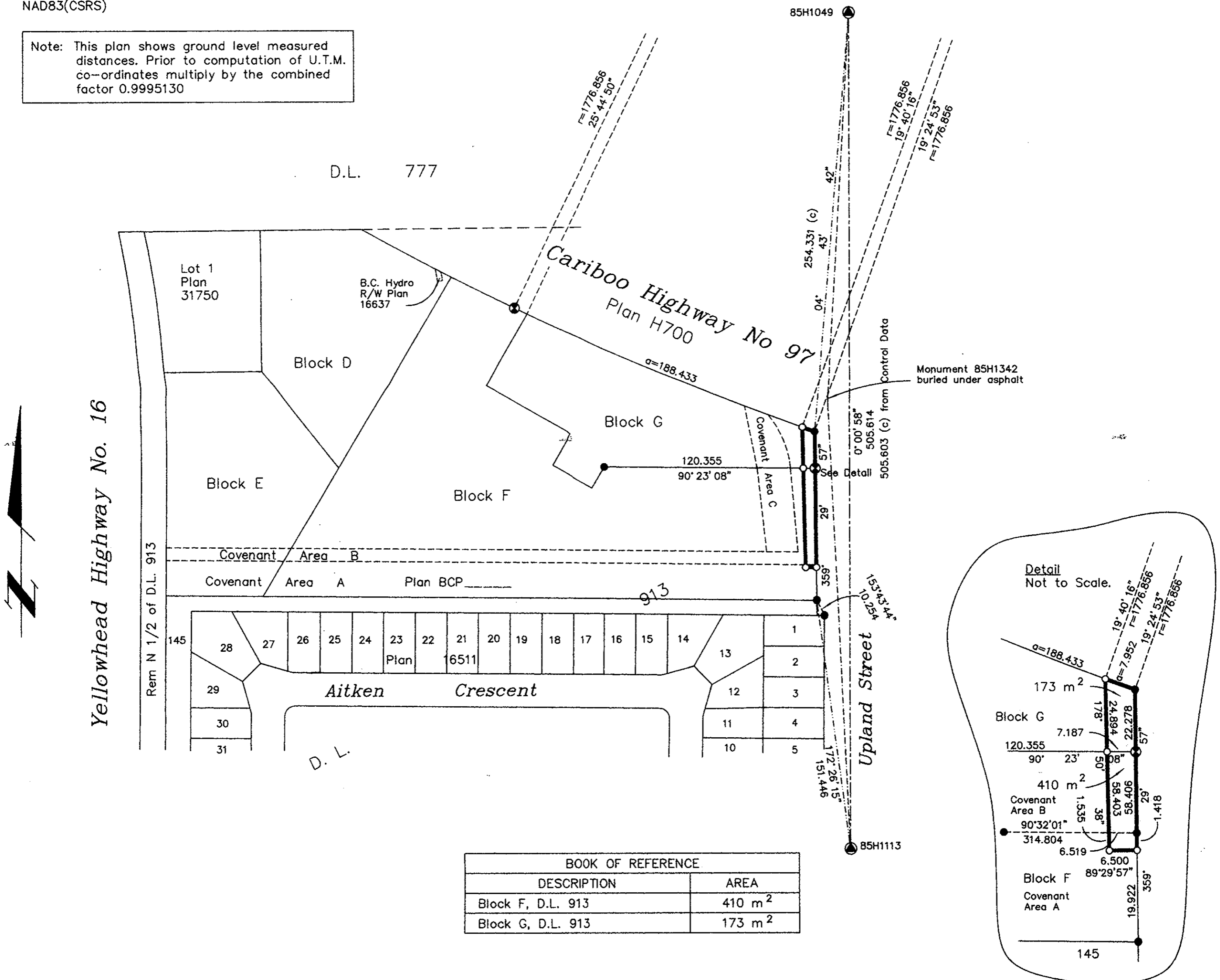


LEGEND

- ⊙ Standard Capped Post Found
- Standard Iron Post Found
- Standard Iron Post Placed
- ⊕ Control Monument Found

Grid bearings are derived from observations between
control monuments 85H1113 and 85H1049 integrated
survey area number 39, City of Prince George, B.C.
NAD83(CSRS)

Note: This plan shows ground level measured
distances. Prior to computation of U.T.M.
co-ordinates multiply by the combined
factor 0.9995130



BOOK OF REFERENCE	
DESCRIPTION	AREA
Block F, D.L. 913	410 m ²
Block G, D.L. 913	173 m ²

I, Gordon Kilbride, a British Columbia Land Surveyor, of
Prince George, in British Columbia, certify that I was
present at and personally superintended the survey
represented by this plan, and that the survey and plan
are correct. The field survey was completed on the 20 day
of January, 2004. The plan was completed and
checked, and the checklist filed under # 11752, on the
16 day of February, 2004.

Gordon Kilbride
Gordon Kilbride, B.C.L.S.

This plan lies within the Fraser-Fort
George Regional District.

KILBRIDE LAND SURVEYING LTD.
British Columbia Land Surveyors
Prince George, B.C.
Ph: (250) 562-1196 Fax: 562-3656

F.B.- RA D.L.- 913 File No. - 030238RW