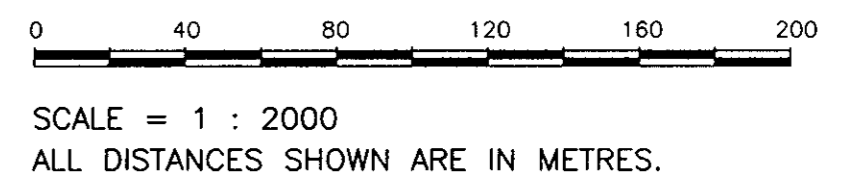


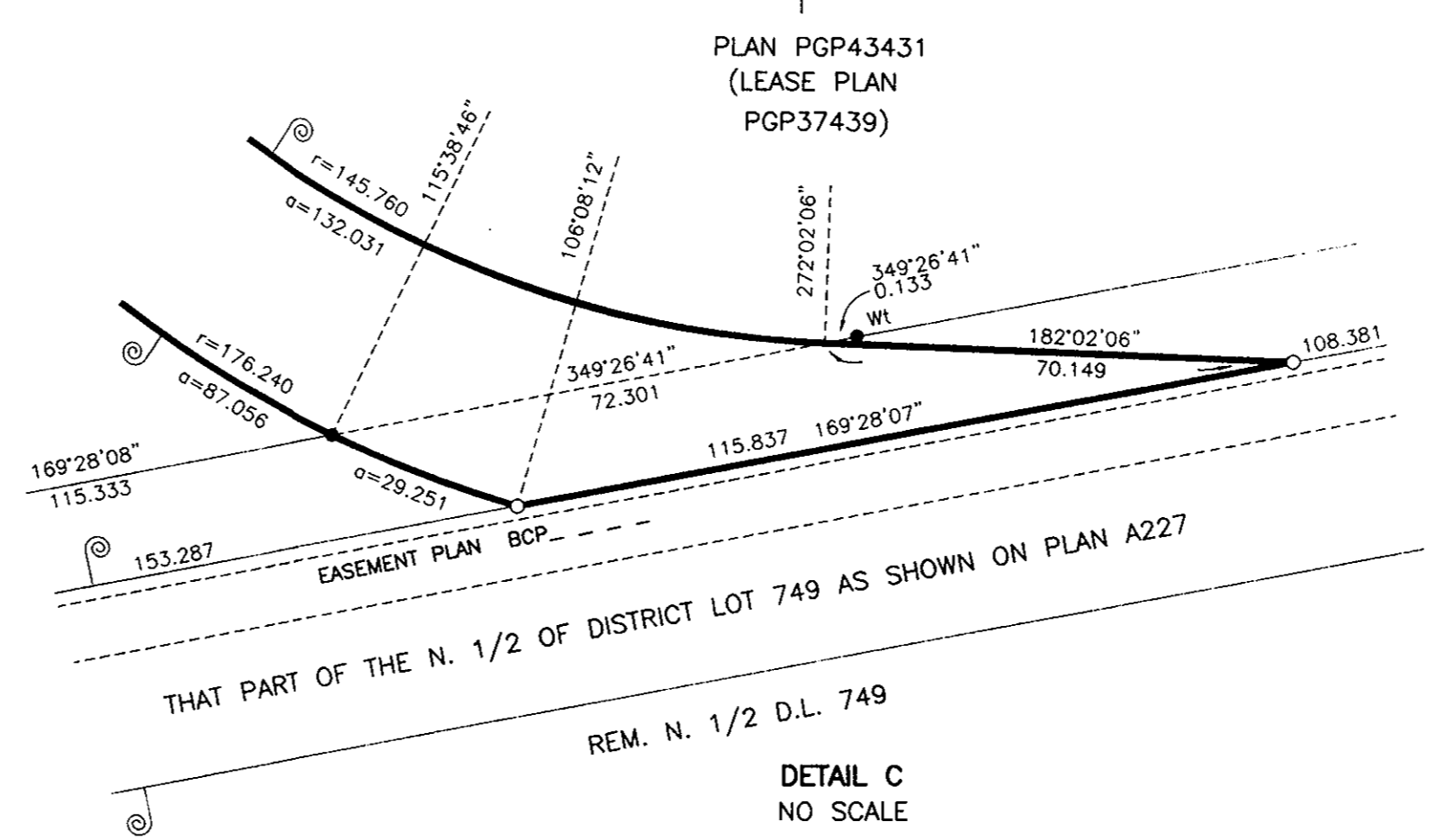
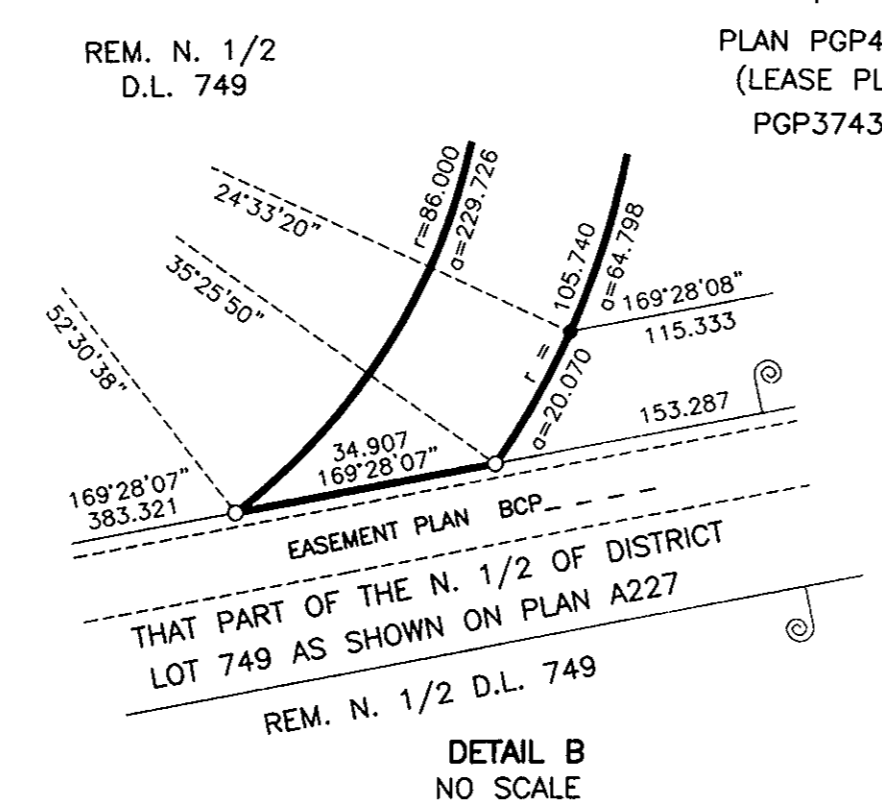
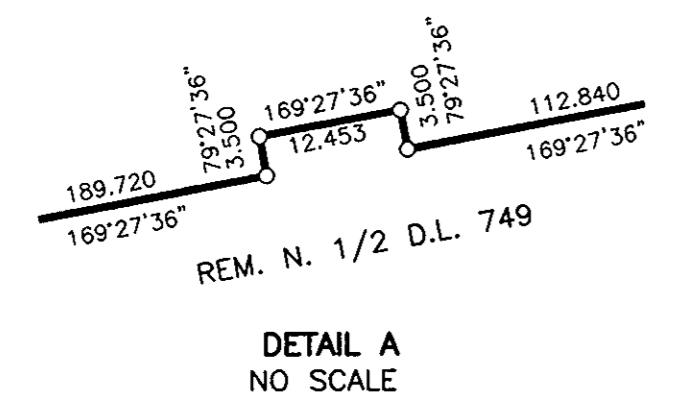
REFERENCE PLAN OF STATUTORY  
 RIGHT OF WAY OVER PART OF THE  
 NORTH 1/2 DISTRICT LOT 749 EXCEPT  
 PLANS A-227 AND PGP43431  
 CARIBOO DISTRICT

B.C.G.S. 93G.087  
 PURSUANT TO SECTION 99(1)(e) OF LAND TITLE ACT.



THIS PLAN SHOWS GROUND-LEVEL MEASURED DISTANCES,  
 PRIOR TO COMPUTATION OF U.T.M. COORDINATES, MULTIPLY  
 BY COMBINED FACTOR 0.9995119.  
 GRID BEARINGS ARE DERIVED FROM OBSERVATIONS  
 BETWEEN CONTROL MONUMENTS 86H1727, AND 86H1726,  
 INTEGRATED SURVEY AREA NUMBER 39, PRINCE GEORGE.

- LEGEND
- STANDARD IRON POST FOUND
  - STANDARD IRON POST PLACED
  - ⊙ STANDARD CAPPED POST FOUND
  - ⊕ CONTROL MONUMENT



I, RONALD L. JOHNS, A BRITISH COLUMBIA LAND  
 SURVEYOR, OF PRINCE GEORGE, IN BRITISH COLUMBIA,  
 CERTIFY THAT I WAS PRESENT AT AND PERSONALLY  
 SUPERINTENDED THE SURVEY REPRESENTED BY THIS  
 PLAN AND THAT THE SURVEY AND PLAN ARE CORRECT.  
 THE FIELD SURVEY WAS COMPLETED ON  
 THE 14TH DAY OF MAY, 2004. THE PLAN  
 WAS COMPLETED AND CHECKED, AND THE CHECKLIST FILED  
 UNDER # 15307, ON THE 14TH DAY OF MAY, 2004.

R.L. JOHNS  
 R.L. JOHNS, B.C.L.S., C.L.S.

THIS PLAN LIES WITHIN THE FRASER-  
 FORT GEORGE REGIONAL DISTRICT.

R. L. JOHNS LAND SURVEYING LTD.  
 LEGAL AND ENGINEERING SURVEYS  
 240 VICTORIA STREET  
 PRINCE GEORGE, B. C. V2L 2J4  
 PHONE: (250) 562-5759  
 FAX: (250) 562-5763