

REFERENCE PLAN OF EASEMENT OVER  
 PART REM. OF THAT PART PARCEL 1, DISTRICT LOTS  
 745 & 747, PLAN 34384 AS SHOWN ON PLAN PGP35183  
 CARIBOO DISTRICT

PLAN No. BCP 10775  
 Ref. No. BW173849  
 DEPOSITED IN THE LAND TITLE OFFICE  
 AT NEW WESTMINSTER, B.C., THIS 15  
 DAY OF JULY 2004

B.C.G.S. 93G.087

PURSUANT TO SECTION 99 OF THE LAND TITLE ACT.

REGISTRAR



SCALE = 1 : 500  
 ALL DISTANCES SHOWN ARE IN METRES.

THIS PLAN SHOWS GROUND-LEVEL MEASURED DISTANCES.  
 PRIOR TO COMPUTATION OF U.T.M. COORDINATES, MULTIPLY  
 BY COMBINED FACTOR 0.9995119.

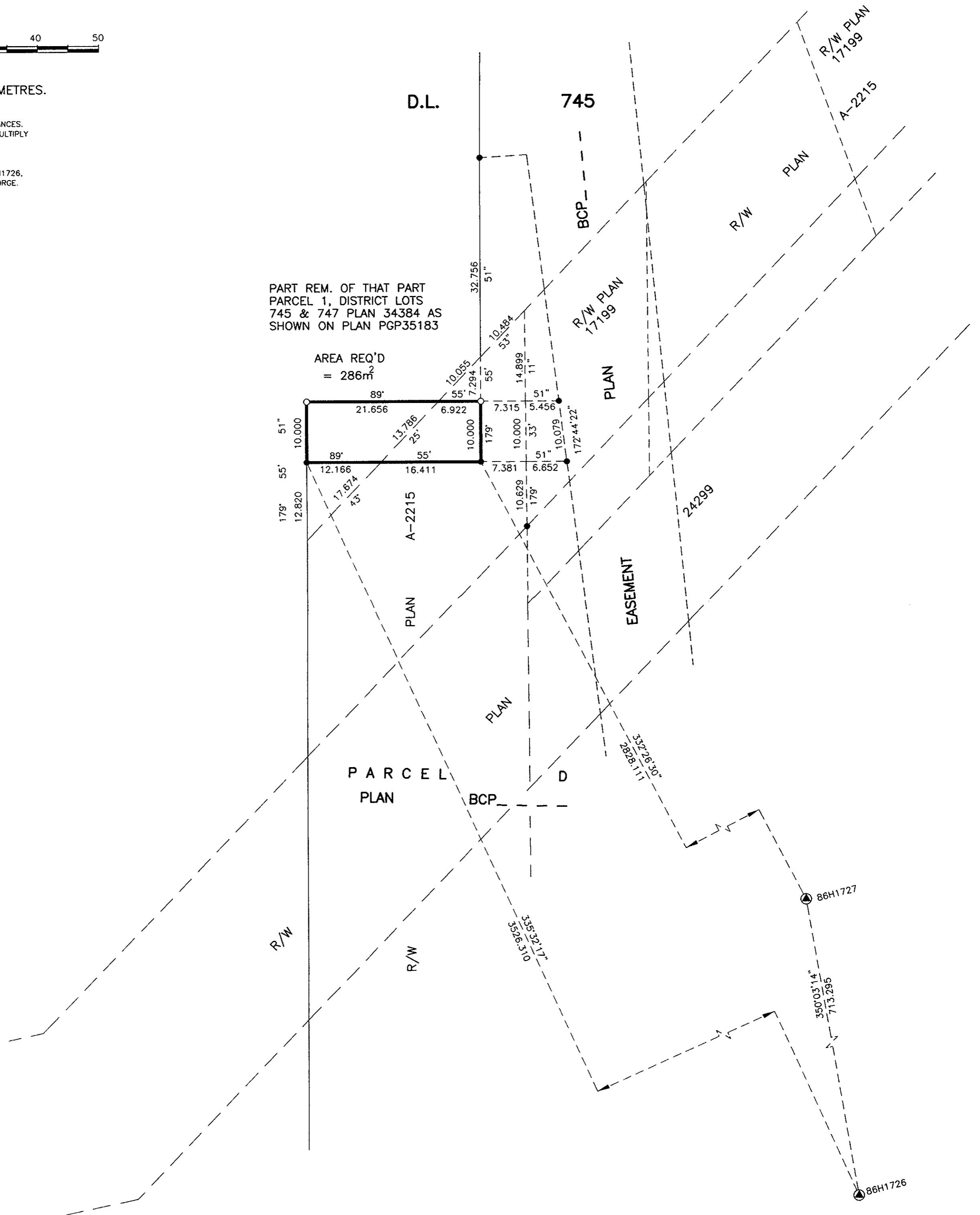
GRID BEARINGS ARE DERIVED FROM OBSERVATIONS  
 BETWEEN CONTROL MONUMENTS 86H1727, AND 86H1726.  
 INTEGRATED SURVEY AREA NUMBER 39, PRINCE GEORGE.

LEGEND

- STANDARD IRON POST FOUND
- STANDARD IRON POST PLACED
- ⊙ CONTROL MONUMENT

PART REM. OF THAT PART  
 PARCEL 1, DISTRICT LOTS  
 745 & 747 PLAN 34384 AS  
 SHOWN ON PLAN PGP35183

AREA REQ'D  
 = 286m<sup>2</sup>



I, RONALD L. JOHNS, A BRITISH COLUMBIA LAND SURVEYOR, OF PRINCE GEORGE, IN BRITISH COLUMBIA, CERTIFY THAT I WAS PRESENT AT AND PERSONALLY SUPERINTENDED THE SURVEY REPRESENTED BY THIS PLAN AND THAT THE SURVEY AND PLAN ARE CORRECT. THE FIELD SURVEY WAS COMPLETED ON THE 14TH DAY OF MAY, 2004. THE PLAN WAS COMPLETED AND CHECKED, AND THE CHECKLIST FILED UNDER # 15308, ON THE 14TH DAY OF MAY, 2004.

*R.L. Johns*  
 R.L. JOHNS, B.C.L.S., C.L.S.

THIS PLAN LIES WITHIN THE FRASER-FORT GEORGE REGIONAL DISTRICT.

R. L. JOHNS LAND SURVEYING LTD.  
 LEGAL AND ENGINEERING SURVEYS  
 240 VICTORIA STREET  
 PRINCE GEORGE, B. C. V2L 2J4  
 PHONE: (250)562-5759  
 FAX: (250)562-5703  
 2003059B I13-1-33  
 I14-7.8

#851C