

REFERENCE PLAN OF EASEMENT OVER PART PARCEL D (PLAN BCP 10114) THAT PART OF PARCEL 1 DISTRICT LOTS 745 AND 747 CARIBOO DISTRICT PLAN 34384 AS SHOWN ON PLAN RGP35183 AND PARCEL F (PLAN BCP 10114) THAT PART OF DISTRICT LOT 485 CARIBOO DISTRICT AS SHOWN ON PLAN 32913.

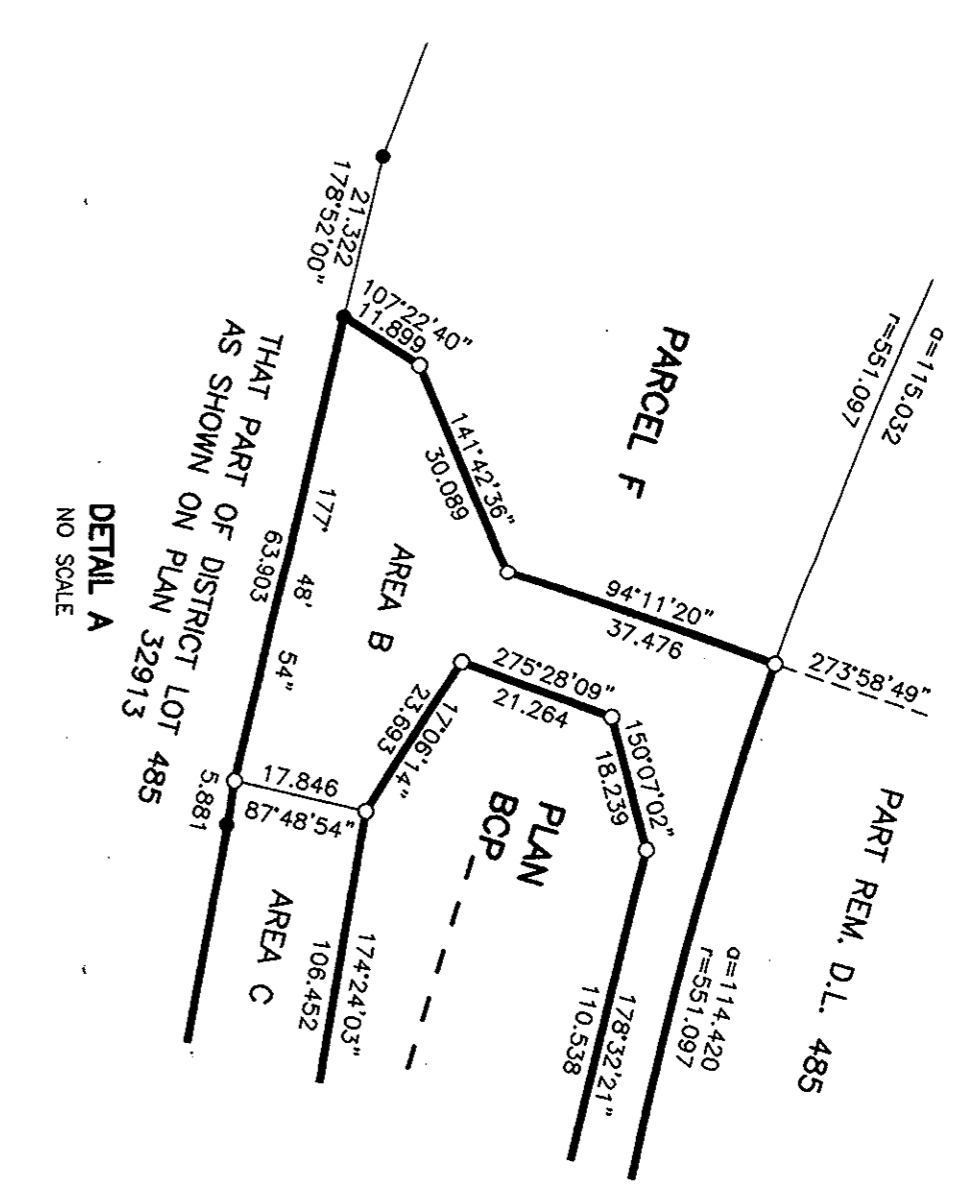
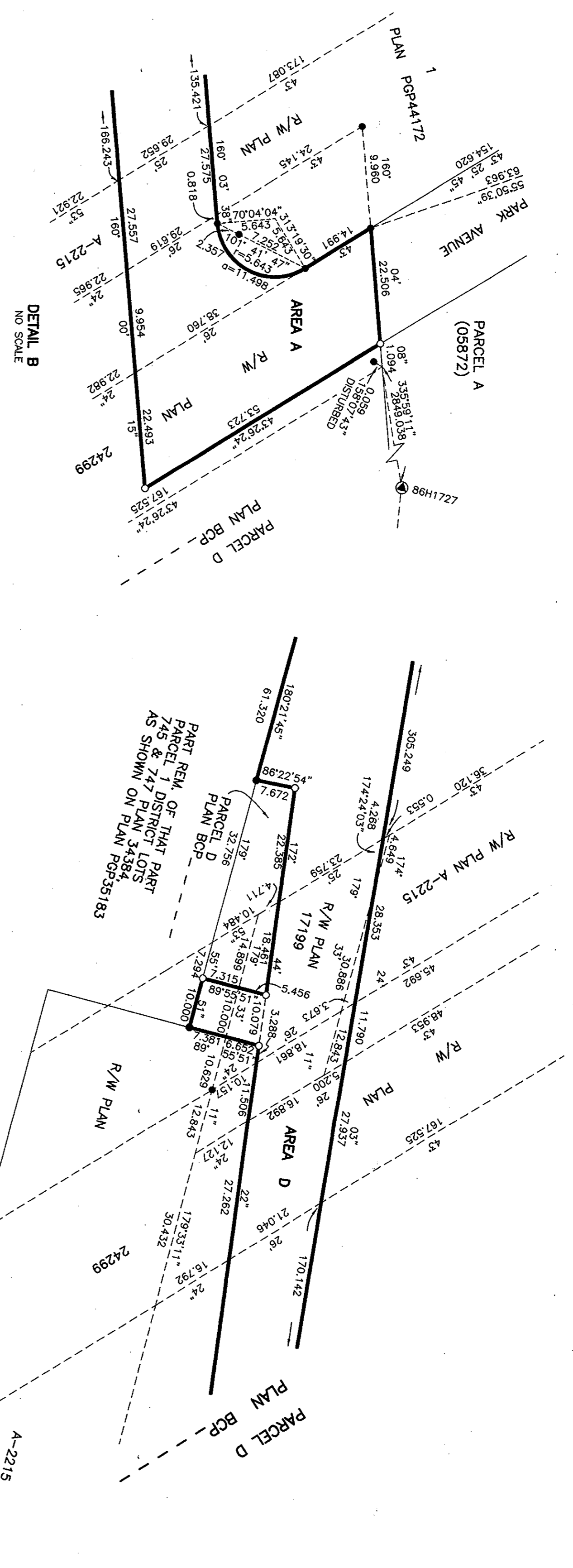
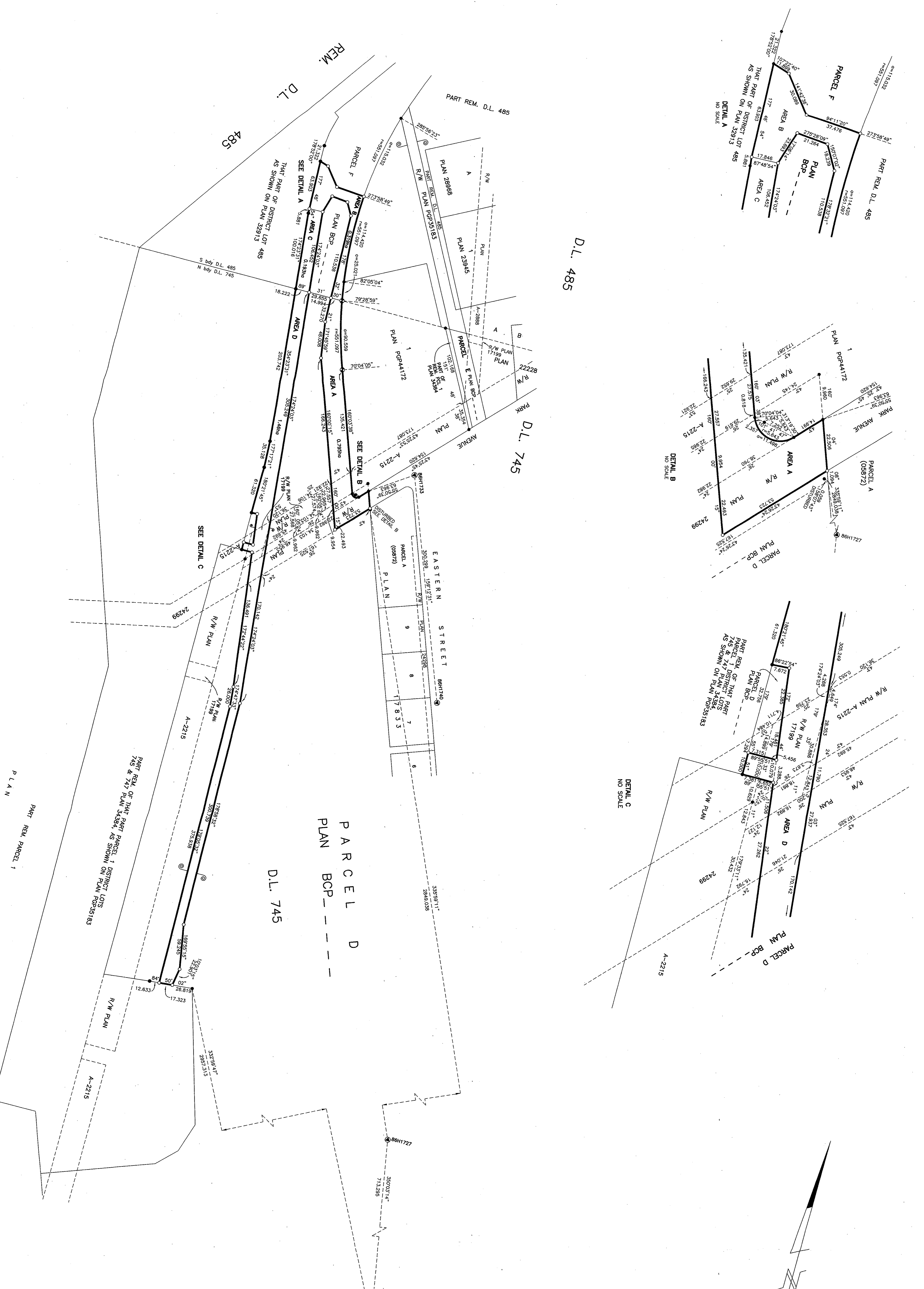
B.C.G.S. 936,087  
 PURSUANT TO SECTION 99 OF THE BRITISH COLUMBIA LAND TITLE ACT.

SCALE = 1 : 2000  
 ALL DISTANCES SHOWN ARE IN METRES.

THIS PLAN SHOWS GRADE-LEVEL, MEASURED DISTANCES, FROM TO CORNER OF THE TITLE, CORNER MARKS, METERS, AND BEARS REFERENCE TO THE DISTRICT PLAN 34384, DISTRICT LOTS 745 AND 747, AND DISTRICT LOT 485, CARIBOO DISTRICT, AND PARCEL F, CARIBOO DISTRICT, AS SHOWN ON PLAN RGP35183, AND PARCEL 1, DISTRICT LOTS 745 AND 747, CARIBOO DISTRICT, AS SHOWN ON PLAN 32913.

LEGEND  
 ○ STANDARD OPEN POST FOUND  
 ● STANDARD CLOSED POST FOUND  
 ○ CONTROL MARKER

ESSENTIAL AREA	BOOK OF REFERENCE
AREA A	PARCEL D (PLAN BCP 10114) THAT PART OF PARCEL 1 AS SHOWN ON PLAN RGP35183
AREA B	PARCEL F (PLAN BCP 10114) THAT PART OF DISTRICT LOT 485 AS SHOWN ON PLAN 32913
AREA C	PARCEL 1 (DISTRICT LOTS 745 AND 747) AS SHOWN ON PLAN RGP35183
AREA D	PARCEL 1 (DISTRICT LOTS 745 AND 747) AS SHOWN ON PLAN 32913



I, RONALD L. JONES, A BRITISH COLUMBIA LAND SURVEYOR, OF FRENCH CREEK IN BRITISH COLUMBIA, SUPERINTENDED THE SURVEY REPRESENTED BY THIS PLAN. THE SURVEY WAS COMPLETED ON THE 13<sup>TH</sup> DAY OF JULY 1994. ON THE 20<sup>TH</sup> DAY OF MAY, 2004, THIS PLAN WAS CORRECTED ON THE BASIS OF THE PLAN UNDER # 15043 ON THE 20<sup>TH</sup> DAY OF MAY, 2004.

R.L. JONES LAND SURVEYING LTD.  
 240 WESTERN STREET  
 VANCOUVER, B.C. V6Z 2K4  
 PHONE: (604) 275-2775  
 FAX: (604) 275-2775