

REFERENCE PLAN OF STATUTORY
RIGHT OF WAY OVER LOT 1, PLAN BCP6928
AND REMAINDER LOT 47, PLAN 22108,
BOTH OF DISTRICT LOTS 482 AND 2507,
CARIBOO DISTRICT.
Pursuant to Section 113 of the
Land Title Act.
B.C.G.S. 93G.097

PLAN NO. BCP 10557

Deposited in the Land Title Office at New
Westminster this 21 day of April 2004.

Baron Byrnis
REGISTRAR
BW 139548

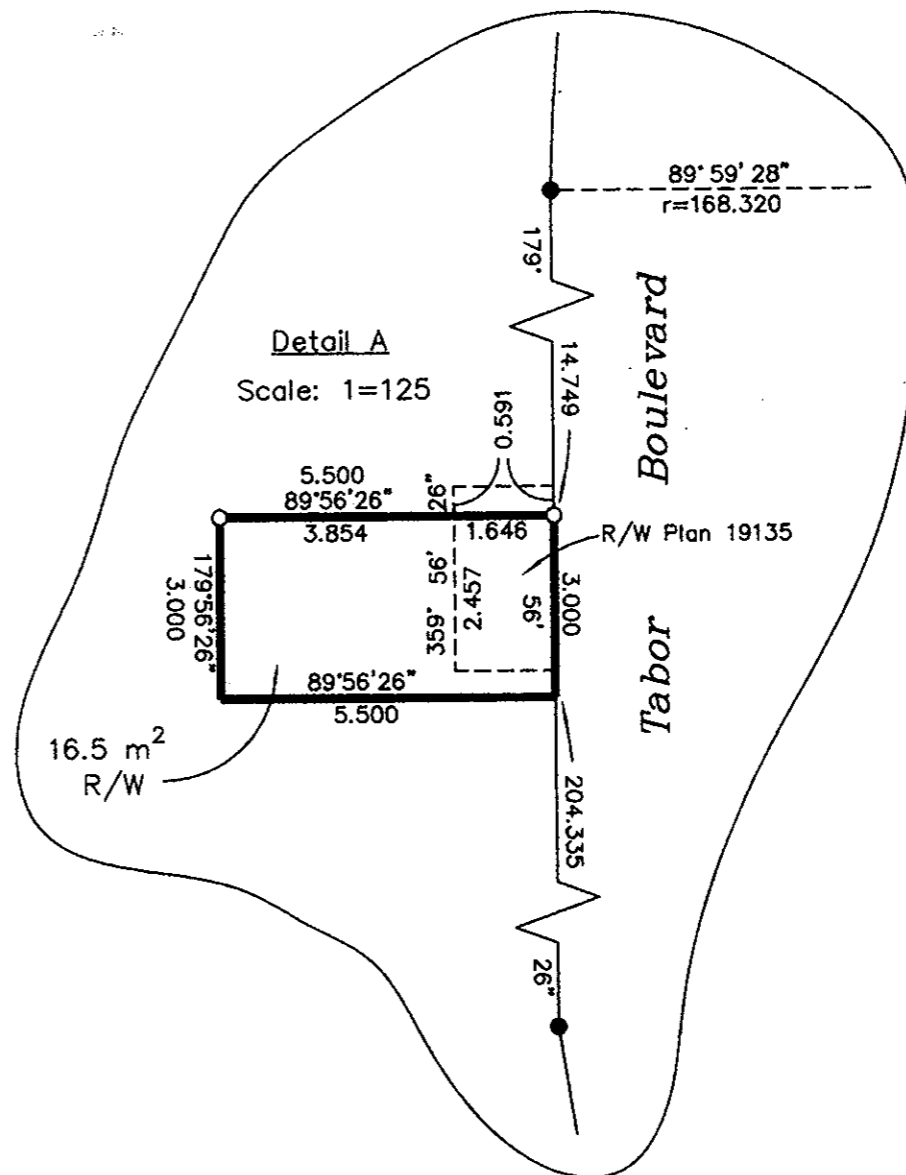
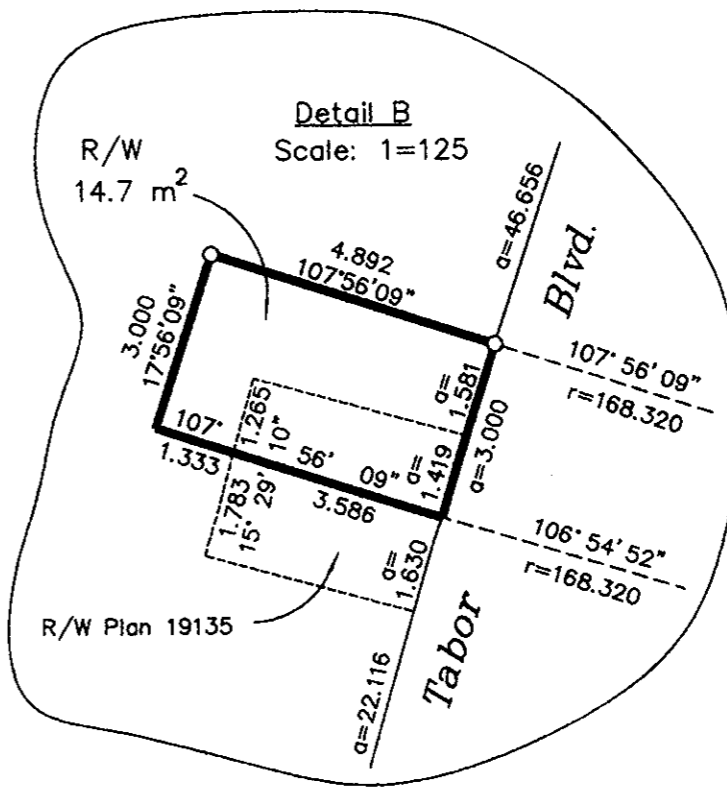
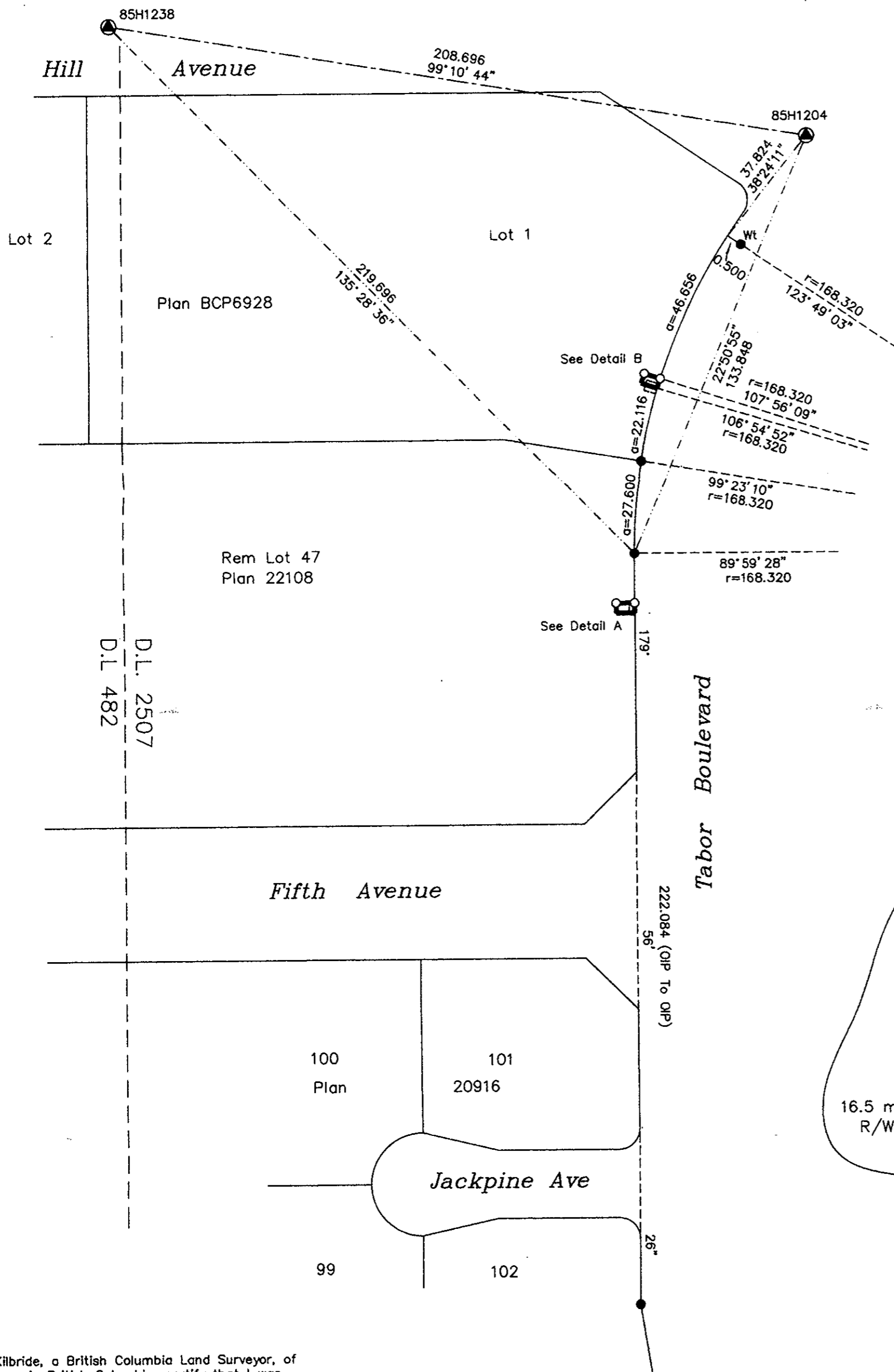
Scale: 1 : 1250 (Distances are in metres)



Grid bearings are derived from observations between
control monuments 85H1238 and 85H1204, integrated
survey area number 39, City of Prince George, B.C.
NAD83(CSRS)

- LEGEND**
- Standard Iron Post Found
 - Standard Iron Post Placed
 - ⊙ Control Monument Found

Note: This plan shows ground level measured
distances. Prior to computation of U.T.M.
co-ordinates multiply by the combined
factor 0.9995092



I, Gordon Kilbride, a British Columbia Land Surveyor, of
Prince George, in British Columbia, certify that I was
present at and personally supervised the survey
represented by this plan, and that the survey and plan
are correct. The field survey was completed on the 19 day
of February, 2004. The plan was completed and
checked, and the checklist filed under #12011, on the
23 day of February, 2004.

Gordon Kilbride
Gordon Kilbride, B.C.L.S.

BOOK OF REFERENCE	
DESCRIPTION	AREA
Lot 1, Plan BCP6928	14.7 m ²
Rem Lot 47, Plan 22108	16.5 m ²

This plan lies within the Fraser-Fort
George Regional District.

KILBRIDE LAND SURVEYING LTD.
British Columbia Land Surveyors
Prince George, B.C.
Ph: (250) 562-1196 Fax: 562-3656

F.B.- XE16 | D.L.- 2507 | File No. - 030266