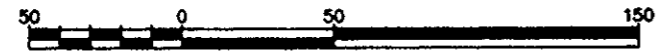


REFERENCE PLAN OF EASEMENT
OVER PART OF REMAINDER OF
NW 1/4 OF DISTRICT LOT 630,
CARIBOO DISTRICT.

B.C.G.S. 93G.087

Scale: 1 : 2500 (Distances are in metres)



LEGEND

- Standard Iron Post Found
- Standard Iron Post Placed
- ⊙ Control Monument Found

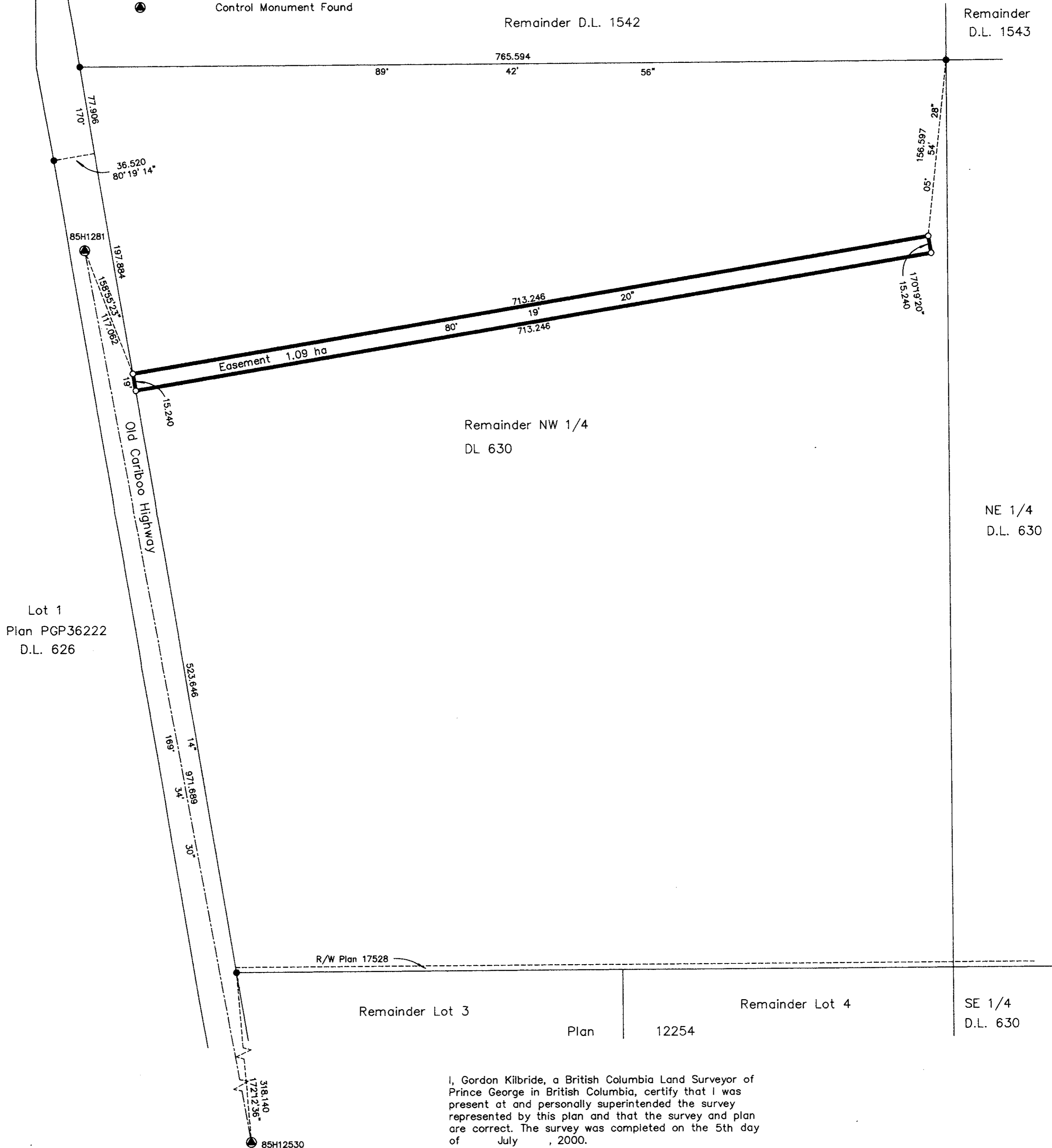
Note: This plan shows ground level measured distances. Prior to computation of U.T.M. co-ordinates multiply by the combined factor 0.9995021

Grid bearings are derived from observations between control monuments 85H1281 and 85H12530, integrated survey area number 39, City of Prince George, B.C. NAD83(CSRS)

PLAN NO. ^{BCP} ~~PGP~~ 10513

Deposited in the Land Title Office at Prince George this 16 day of APRIL, 2004.

REGISTRAR *BW1377*



I, Gordon Kilbride, a British Columbia Land Surveyor of Prince George in British Columbia, certify that I was present at and personally supervised the survey represented by this plan and that the survey and plan are correct. The survey was completed on the 5th day of July, 2000.

Gordon Kilbride
Gordon Kilbride, B.C.L.S.

This plan lies within the Fraser-Fort George Regional District.

KILBRIDE LAND SURVEYING LTD. British Columbia Land Surveyors Prince George, B.C. Ph: (250) 562-1196 Fax: 562-3656		
F.B.- WQ06	D.L.- 630	File No. - 000130