

Deposited in the Land Title Office at New Westminster this 15th day of April 2004.

REGISTRAR B.W. 132663

REFERENCE PLAN OF CONSOLIDATION OF CLOSED ROAD, PLAN BCP 5824, AND LOT 1, BLOCK 49, PLAN 1268, DISTRICT LOT 343, CARIBOO DISTRICT. Pursuant to Section 100(1)(b) of the Land Title Act.

B.C.G.S. 93G.097

Scale: 1 : 750 (Distances are in metres)

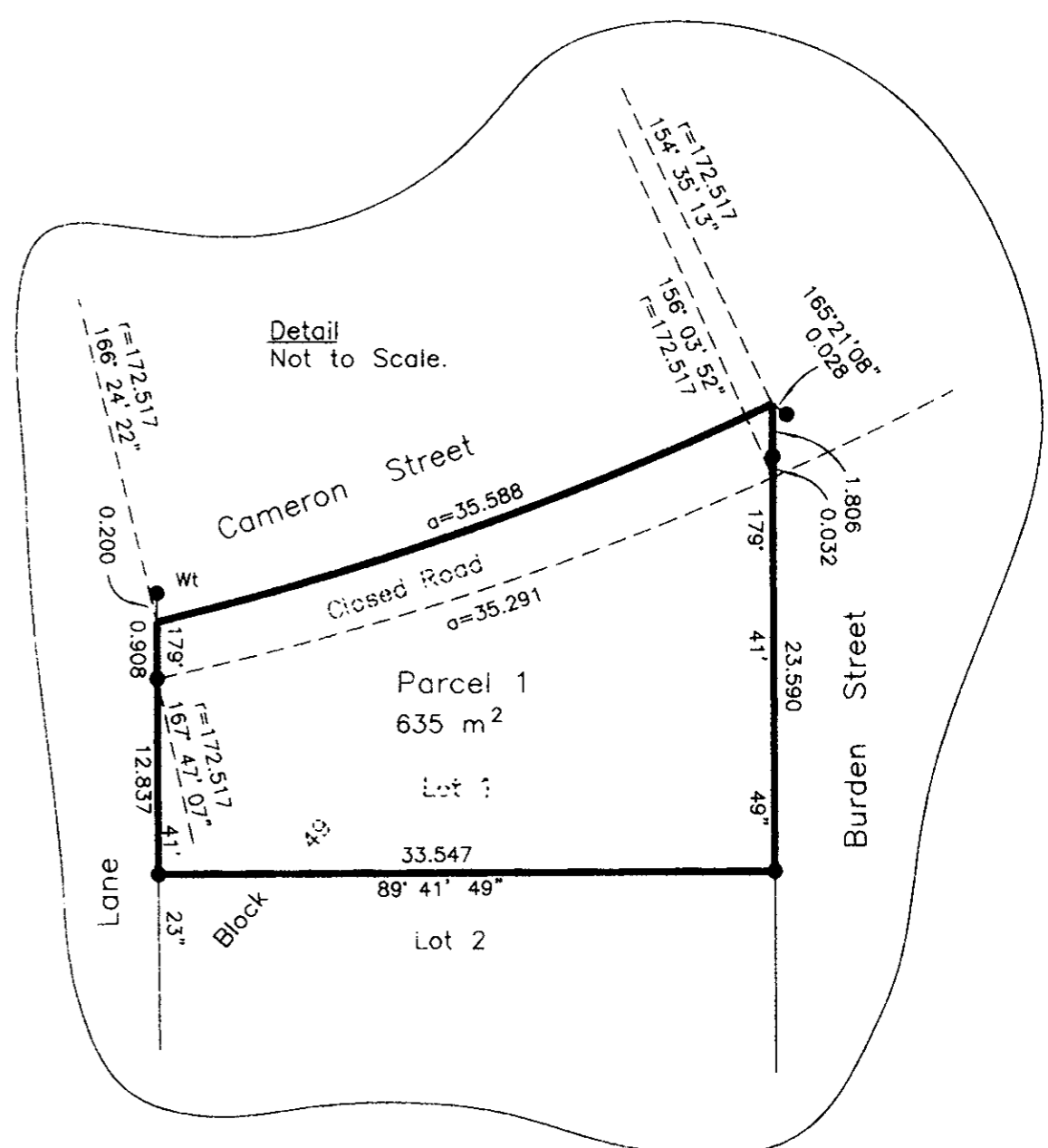
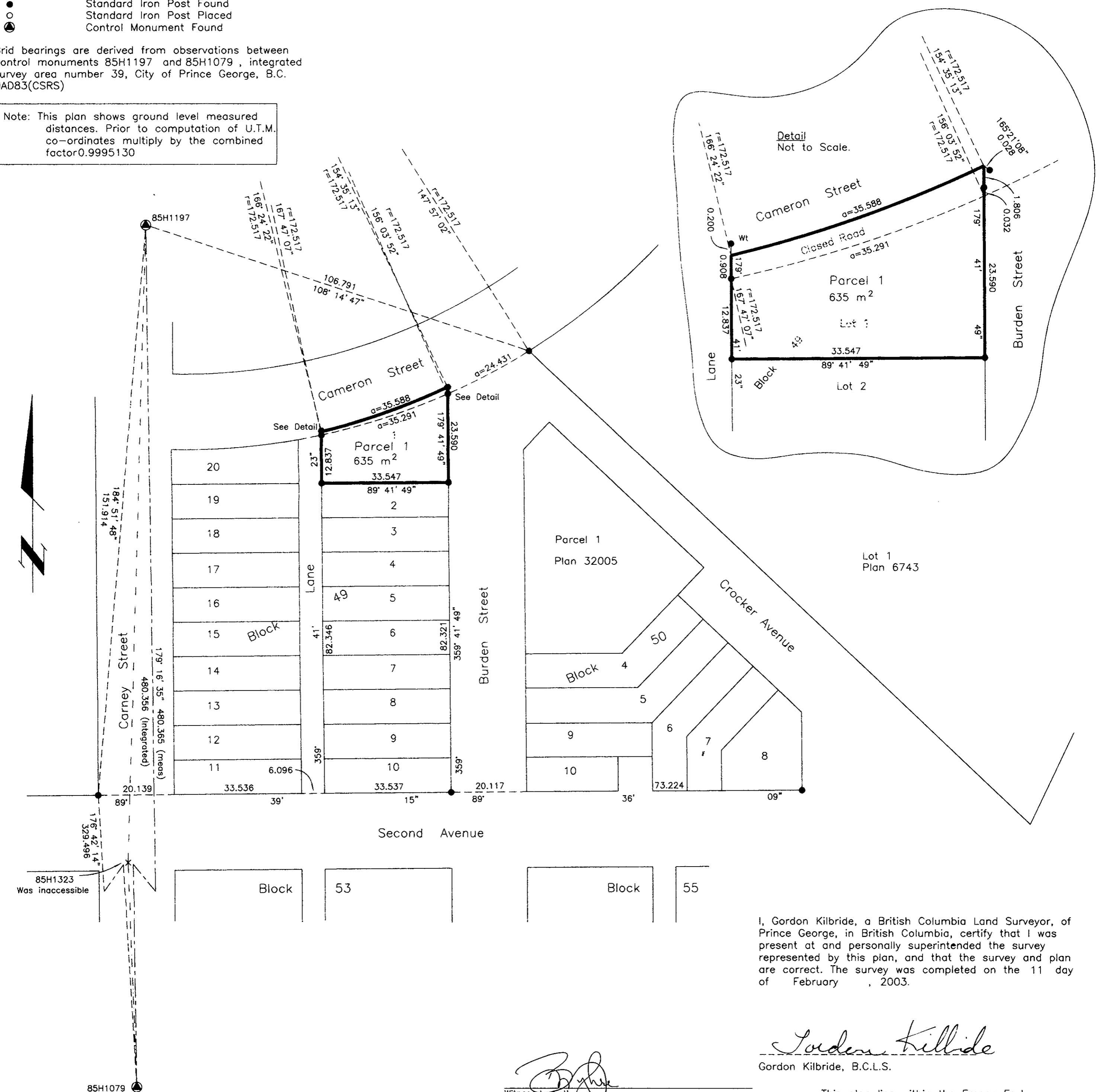


LEGEND

- Standard Iron Post Found
- Standard Iron Post Placed
- ⊙ Control Monument Found

Grid bearings are derived from observations between control monuments 85H1197 and 85H1079, integrated survey area number 39, City of Prince George, B.C. NAD83(CSRS)

Note: This plan shows ground level measured distances. Prior to computation of U.T.M. co-ordinates multiply by the combined factor 0.9995130



I, Gordon Kilbride, a British Columbia Land Surveyor, of Prince George, in British Columbia, certify that I was present at and personally superintended the survey represented by this plan, and that the survey and plan are correct. The survey was completed on the 11 day of February, 2003.

Gordon Kilbride
Gordon Kilbride, B.C.L.S.

Owner:
David Gavin Stevenson
David Gavin Stevenson
Susan K. Stevenson
Susan Kingsbury Stevenson

Witness to both
Debra Myhre
Debra Myhre
1100 Patricia Blvd.
Prince George, BC V2L 3V9
Postal Code
Property Assistant

This plan lies within the Fraser-Fort George Regional District.

KILBRIDE LAND SURVEYING LTD. British Columbia Land Surveyors Prince George, B.C. Ph: (250) 562-1196 Fax: 562-3656		
F.B.- RA	D.L.- 343(49)	File No. - 030004C