

EXPLANATORY PLAN TO ACCOMPANY
 CITY OF PRINCE GEORGE BYLAW
 No. 747, CLOSING ROAD
 ADJACENT TO BLOCK 20, PLAN 902,
 DISTRICT LOT 629, CARIBOO DISTRICT.

PLAN NO. BCP 01976

Deposited in the Land Title Office at New
 Westminster this 5 day of Nov, 2002

BT 08188

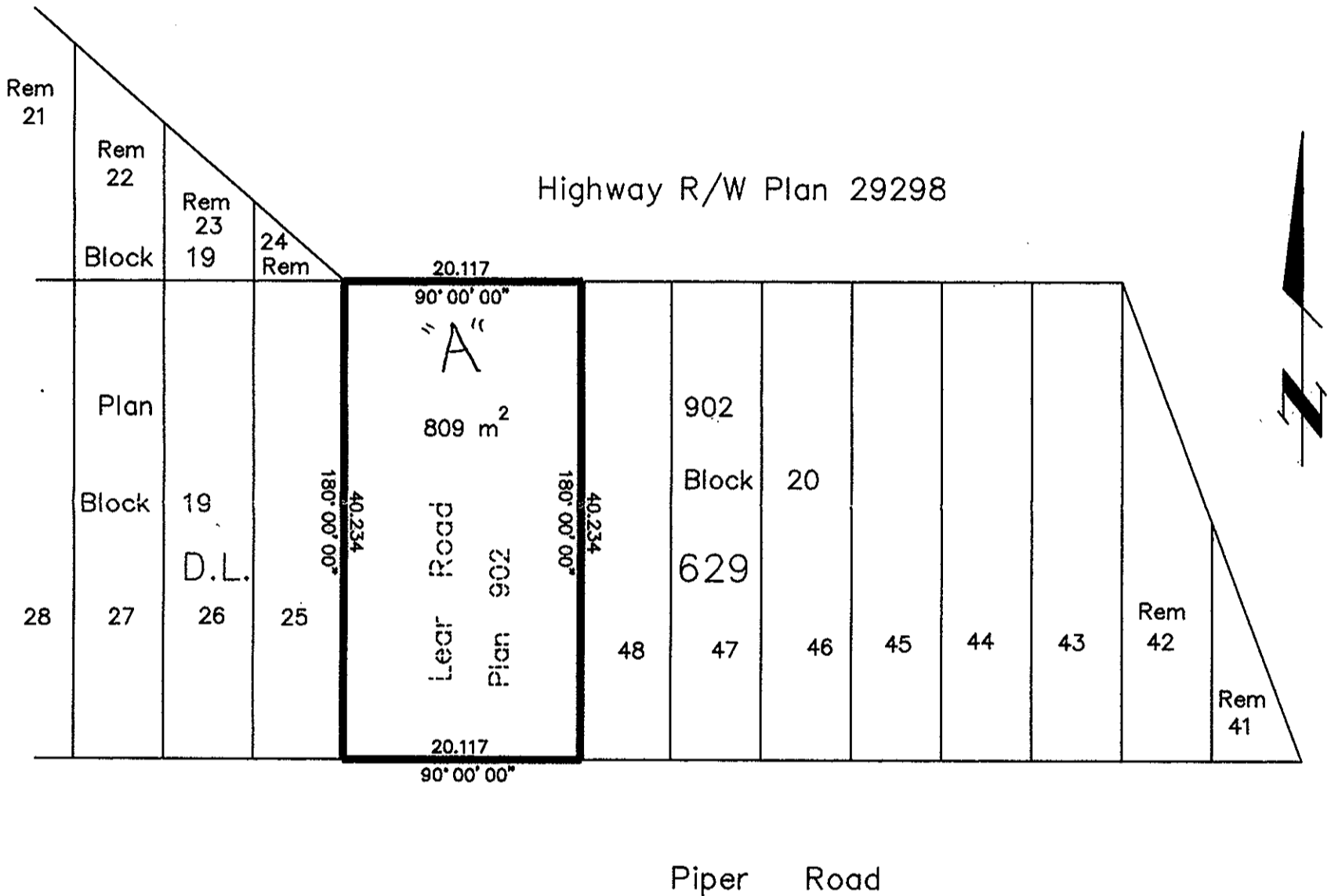
Pursuant to Section 120 of the Land Title Act
 and to Section 541 of the Local Government Act.
 B.C.G.S. 93G.097

REGISTRAR

Scale: 1 : 500 (Distances are in metres)



Bearings are astronomic, derived from
 Plan 902



Block	30		Lot 1	2	3	4	5	6
22	23	24	Plan PGP48155		Block	29		

Certified Correct, according to
 Land Title Office Records.
 This 8 day of October, 2002.

Gordon Kilbride
 Gordon Kilbride, B.C.L.S.

This plan lies within the Fraser-Fort
 George Regional District.

KILBRIDE LAND SURVEYING LTD. <i>British Columbia Land Surveyors</i> Prince George, B.C. Ph: (250) 562-1196 Fax: 562-3656		
F.B.	D.L. 629	File No. 020126R