

Deposited in the Land Title Office at New Westminster this 10 day of Sept 2002

REGISTRAR B T 30259

REFERENCE PLAN OF ROAD CLOSURE TO ACCOMPANY CITY OF PRINCE GEORGE BYLAW 7410, CLOSING PART OF LANE ON PLAN 1268 (ADJACENT TO PARCEL 1, PLAN BCP 898, AND LOT 5, BLOCK 19, PLAN 1268, ALL IN DISTRICT LOT 343, CARIBOO DISTRICT.

Prepared Pursuant to Section 535 of the local Government Act and Section 120 of the Land Title Act.

B.C.G.S. 93G.097

Scale: 1 : 500 (Distances are in metres)

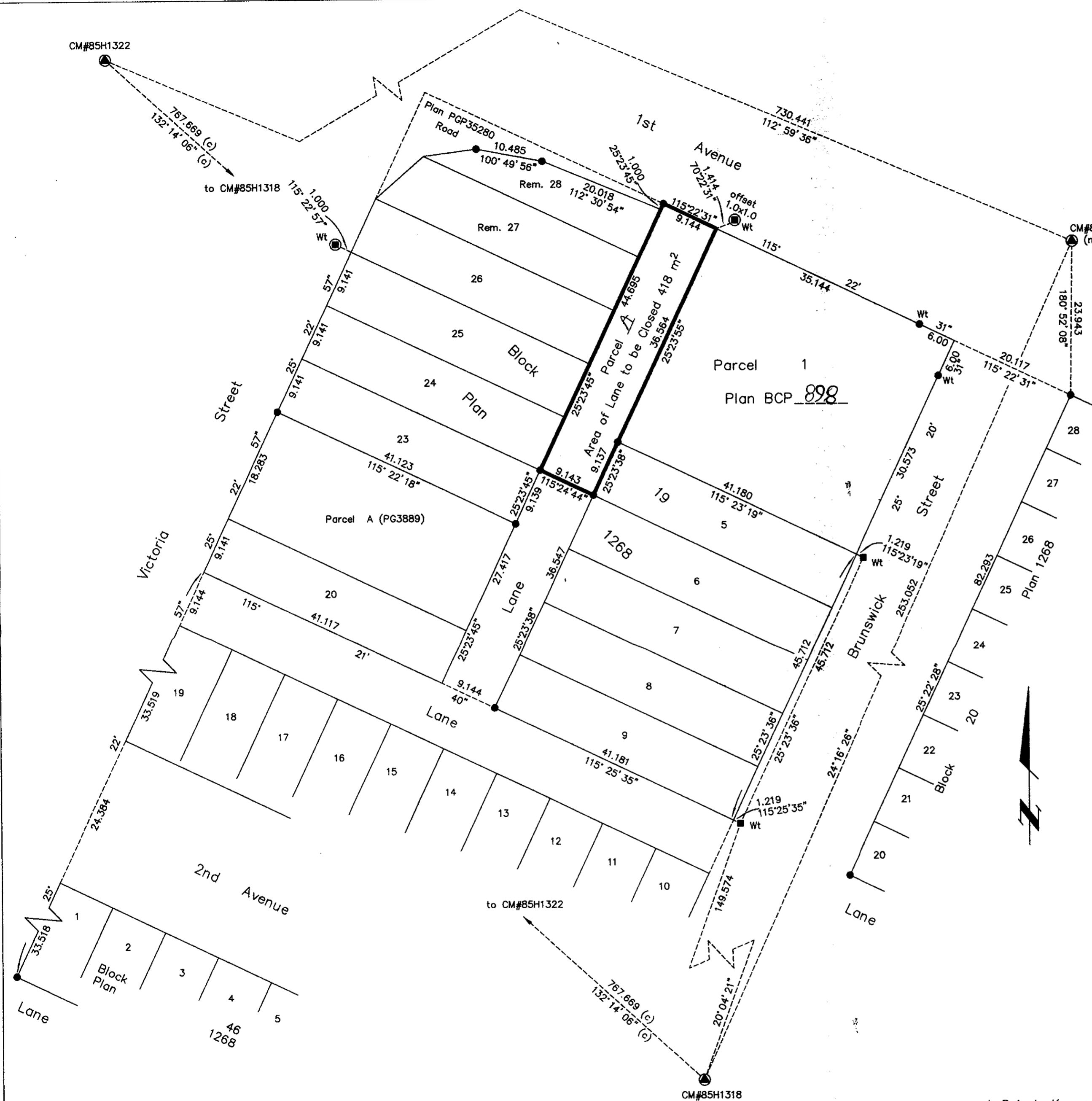


LEGEND

- Standard Rock Post Found
- Lead Plug Found
- Standard Iron Post Found
- ⊙ Control Monument

Grid bearings are derived from observations between control monuments 85H1322 and 85H1318, integrated survey area number 39, City of Prince George, B.C. NAD83(CSRS)

Note: This plan shows ground level measured distances. Prior to computation of U.T.M. co-ordinates multiply by the combined factor 0.99951585



I, Dale L. Keown, a British Columbia Land Surveyor, of Prince George, in British Columbia, certify that I was present at and personally supervised the survey represented by this plan, and that the survey and plan are correct. The survey was completed on the 16th day of May, 2002.

Dale Keown
Dale L. Keown, B.C.L.S.

This plan lies within the Fraser-Fort George Regional District.

KILBRIDE LAND SURVEYING LTD.		
British Columbia Land Surveyors		
Prince George, B.C.		
Ph: (250) 562-1196 Fax: 562-3656		
F.B.- WU8	D.L.- 343 Block - 19	FILE No. - 020056BL