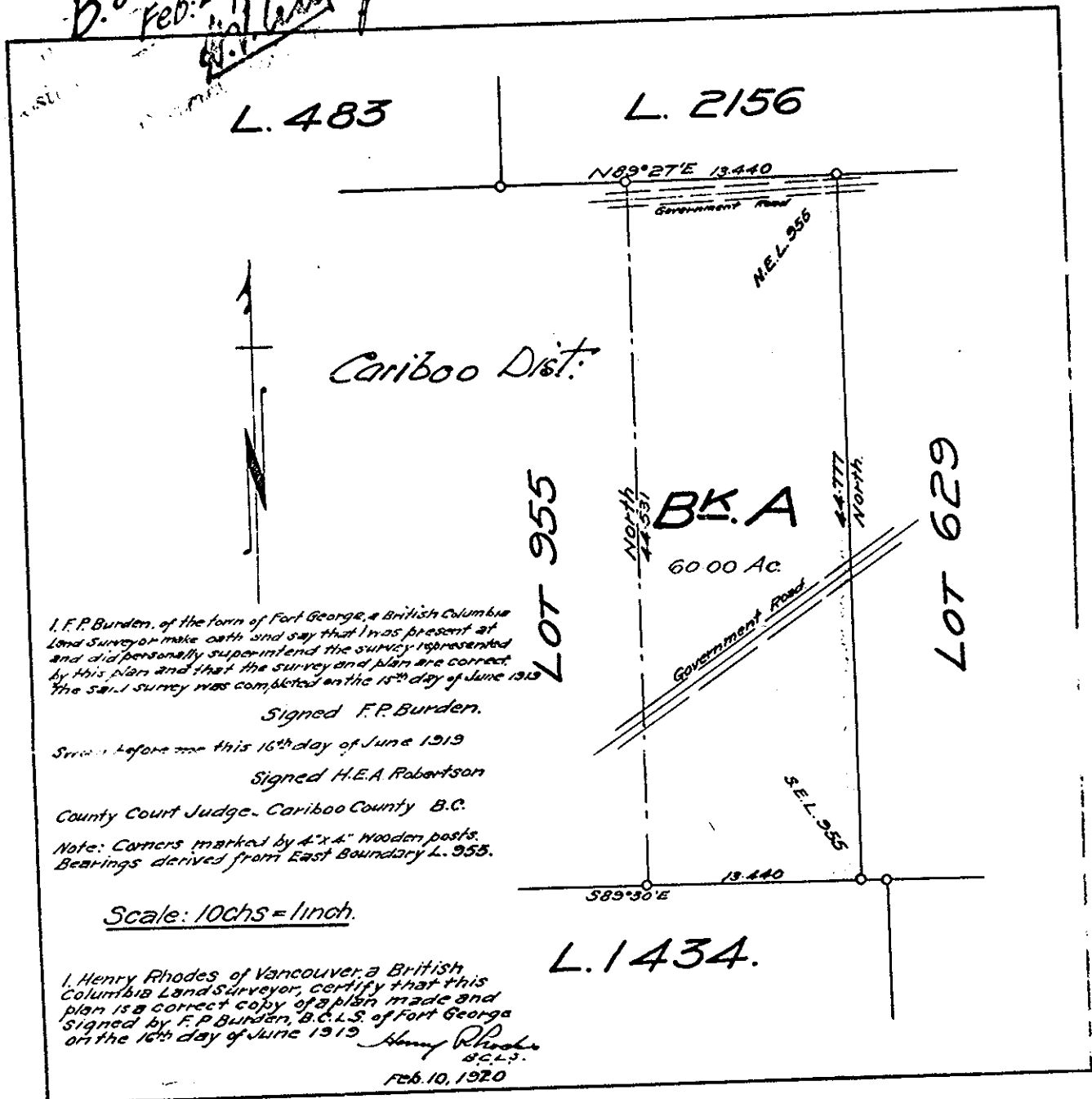


PLOTTED (LK)(LL)

B. 828  
Feb. 26/1920  
H. Rhodes



Cariboo Dist.

L. 483

L. 2156

N89°27'E 13.440

Government Road

N.E.L. 955



North  
44.531

BK. A

6000 Ac

North  
44.777

LOT 629

LOT 955

Government Road

S.E.L. 955

S89°30'E

13.440

L. 1434.

I, F.P. Burden, of the town of Fort George, a British Columbia Land Surveyor make oath and say that I was present at and did personally superintend the survey represented by this plan and that the survey and plan are correct. The said survey was completed on the 15th day of June 1919

Signed F.P. Burden.

Sworn before me this 16th day of June 1919

Signed H.E.A. Robertson

County Court Judge - Cariboo County B.C.

Note: Corners marked by 4"x4" wooden posts. Bearings derived from East Boundary L. 955.

Scale: 10chs = 1inch.

I, Henry Rhodes of Vancouver, a British Columbia Land Surveyor, certify that this plan is a correct copy of a plan made and signed by F.P. Burden, B.C.L.S. of Fort George on the 16th day of June 1919  
Henry Rhodes  
B.C.L.S.

FEB. 10, 1920