

Explanatory Plan to Accompany By-Law No. 1787
 City of Prince George,
 Diverting Part of the Lane in Block 270,
 Plan 1268, District Lot 343, Cariboo District.

Scale: 1 inch = 50 feet

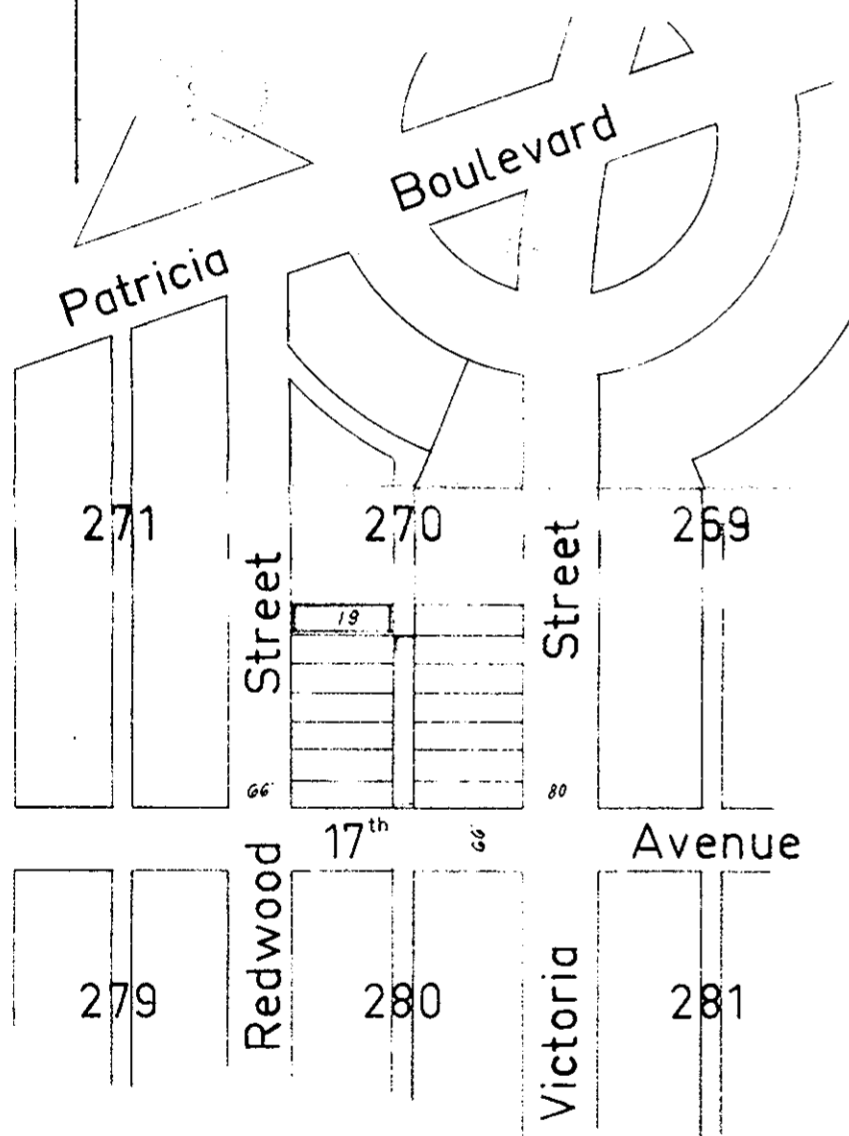
Note: Lane to be closed by By-Law No 1787 shown outlined in red
 Lane to be dedicated by By-Law No 1787 shown outlined in green

Legend Bearings are astronomic and are derived from Plan 1268.

Plan. No B7956

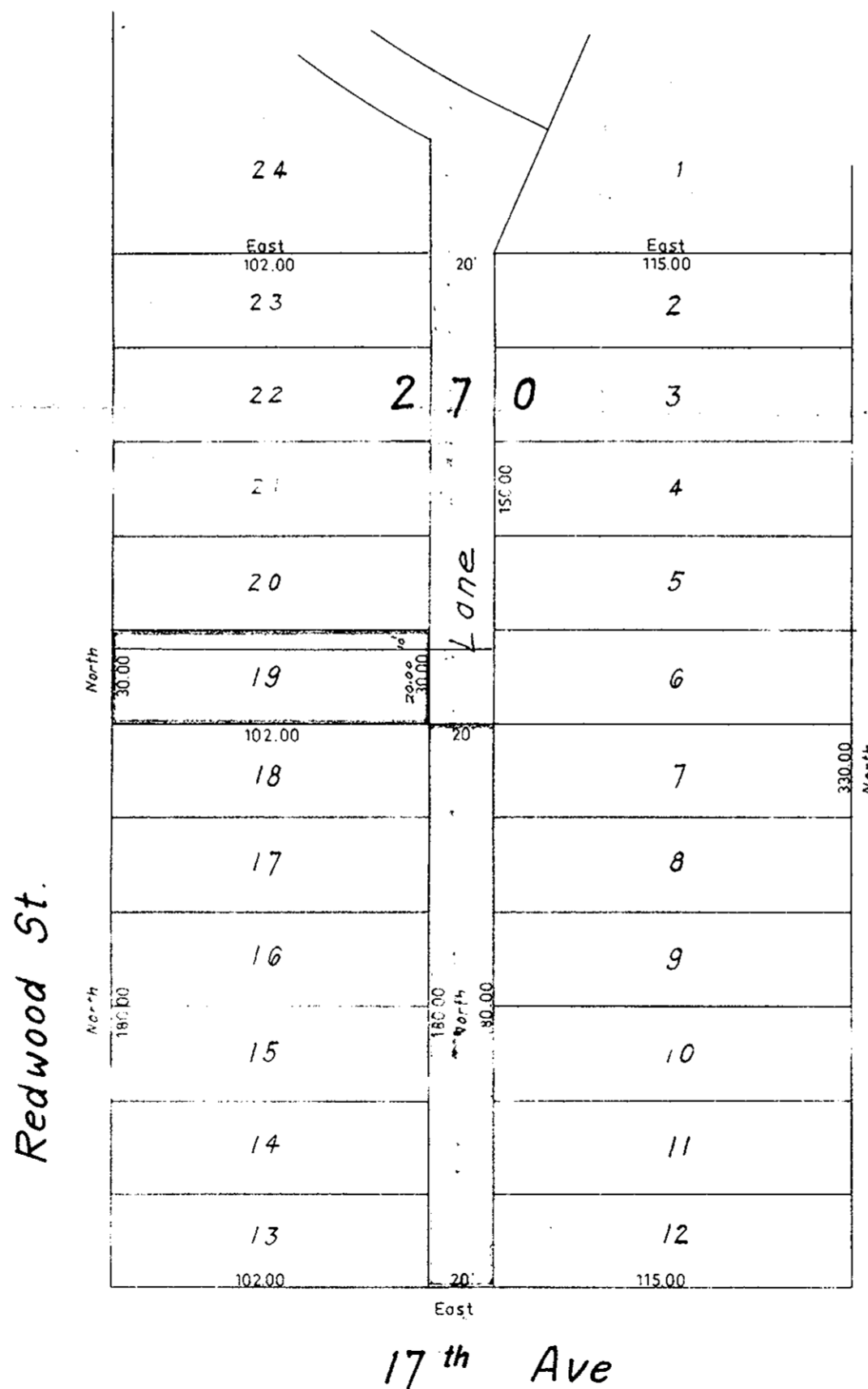
Deposited in the Land Registry Office
 at Kamloops, B.C.
 on the 22 day of March 1966.

H. Kennedy
 Registrar



Key Plan

Scale: 1 inch = 200 feet



Certified Correct
 this 7th day of September 1965.

R. J. Goble

R. J. Goble, B.C.L.S.

McWilliam, Whyte, Serle & Goble

British Columbia Land Surveyors

checked F S D X Ref. No G5100 - 28