

Reference Plan of Dedication of
 Parts of Lots 313, 520, 521, 522 and 533
 Plan 15185, as Road. District Lots 936 and 2507,
 Cariboo District.

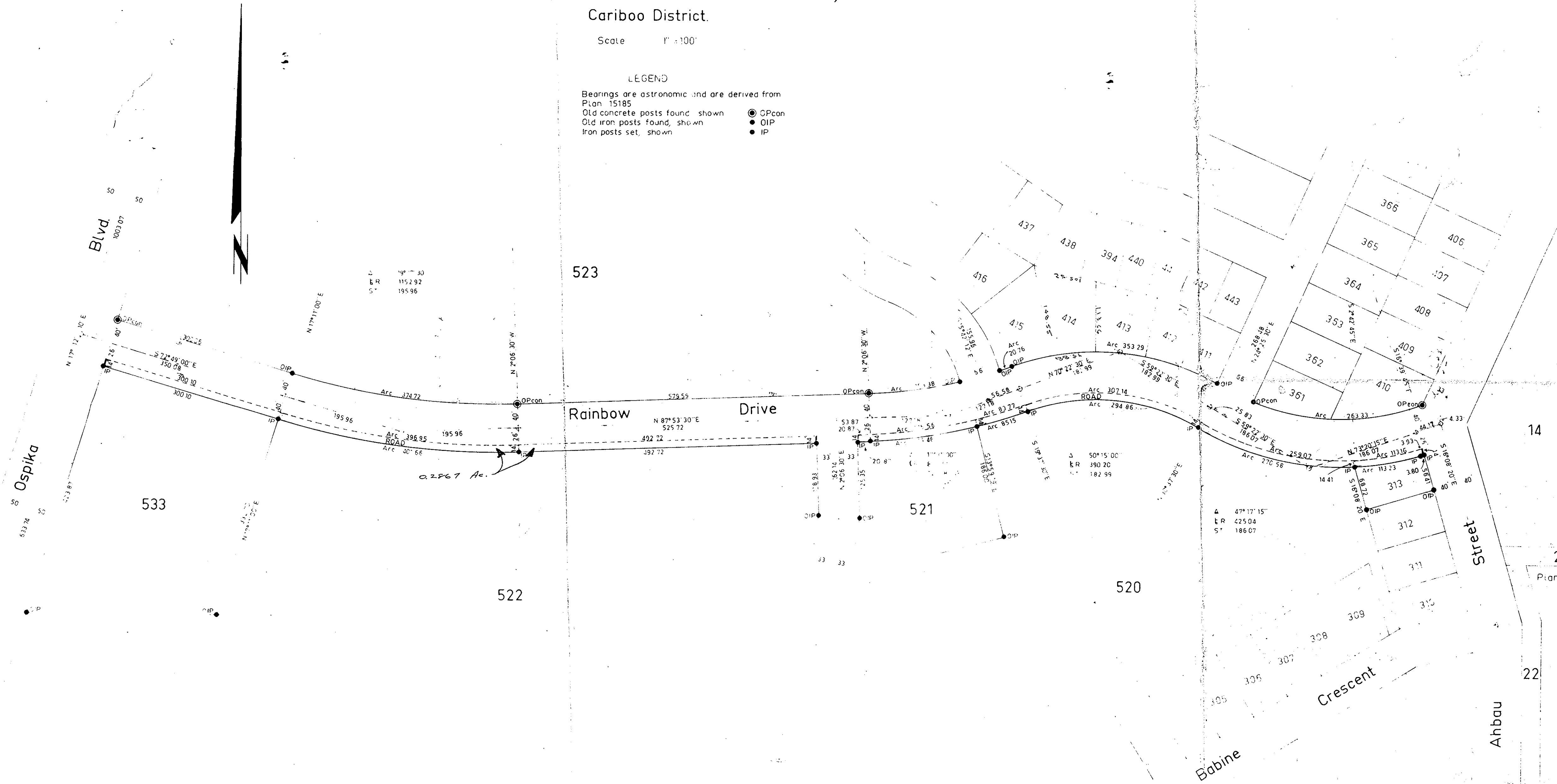
Scale 1" = 100'

LEGEND

Bearings are astronomic and are derived from
 Plan 15185
 Old concrete posts found, shown ● CPcon
 Old iron posts found, shown ● OIP
 Iron posts set, shown ● IP

Plan No B7950
 Deposited in the Land Registry Office at Kamloops, B.C.
 on the 15th day of Feb 1966

H. Kennedy
 Registrar



I, R. J. Goble, of the City of Prince George, British Columbia Land Surveyors, make oath and say that I was present at and did personally superintend the survey represented by this plan and that the survey and plan are correct.

The said survey was completed on the 10th day of Nov 1965

[Signature]
 B.C.L.S.

Sworn before me at Prince George, B.C. this 22nd day of Nov 1965

[Signature]
 A Commissioner for Taking Affidavits within British Columbia

Approved under the Land Registry Act on the 2nd day of Dec 1965

[Signature]
 Approving Officer, City of Prince George

The Secy. of the Corporation of the City of Prince George was attested hereto in the presence of
[Signature]
 Mayor, City of Prince George

[Signature]
 City Clerk, City of Prince George

McWilliam, Whyte, Serle & Goble
 British Columbia Land Surveyors

Checked f s d x Ref No. 64100W 8