

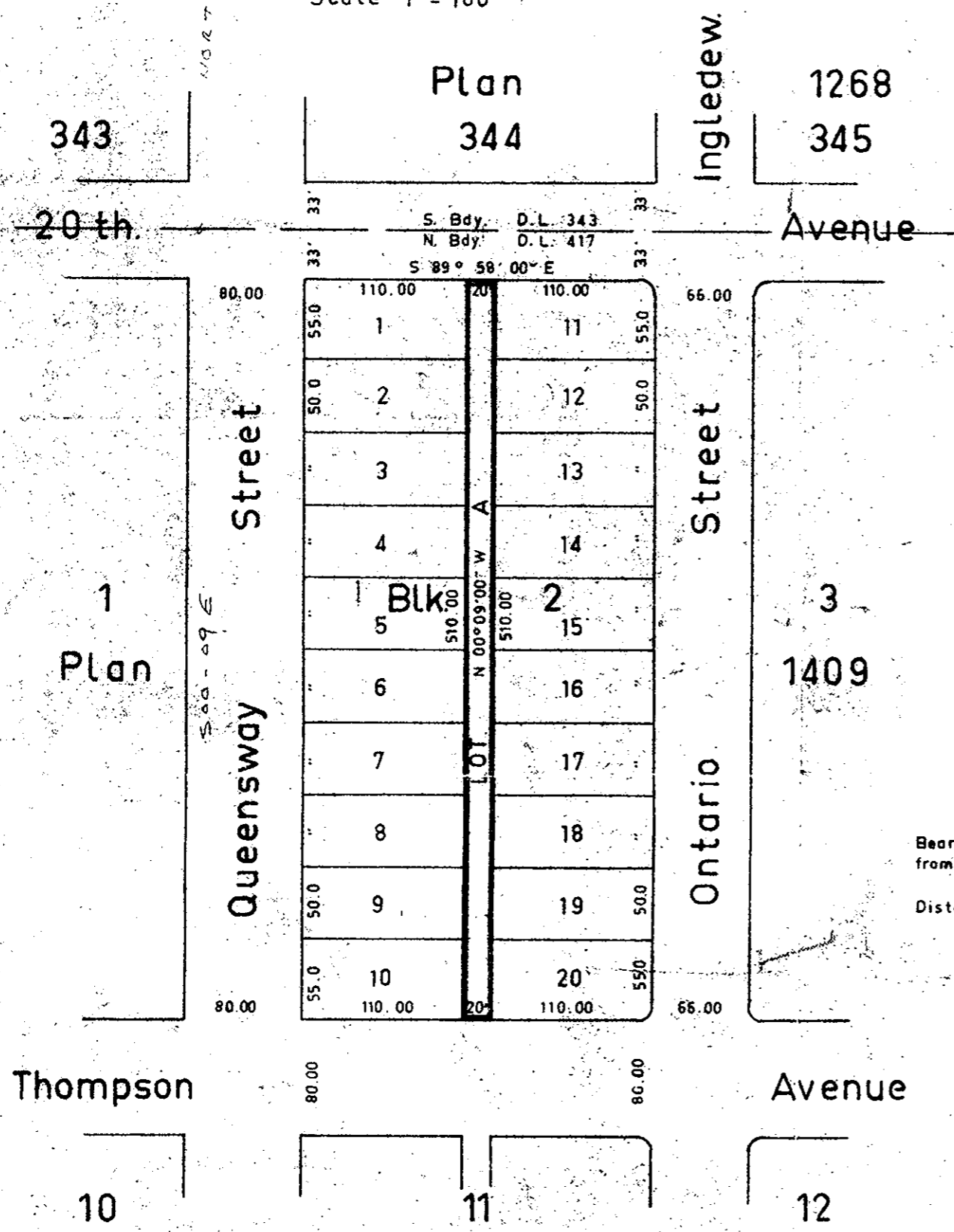
Explanatory Plan to Accompany By Law No. 1817,
 City of Prince George, Closing Lane in Block 2,
 Plan 1409, District Lot 417, CARIBOO DISTRICT.

PLAN B-7945

Deposited in the Land Registry Office at Kamloops,
 this 4th day of FEB 1956

H. Kennedy
 REGISTRAR

Scale 1" = 100'



Legend
 Bearings are astronomic and are derived
 from Plan 1409.
 Distances shown are from Plan 1409

Certified correct
 this 8th day of December, 1965.

R.J. Goble
 R.J. Goble
 B.C.L.S.

McWilliam Whyte Serle & Goble
 British Columbia Land Surveyors
 1595-5th Ave Prince George B.C.

Ref. No. 65100-39