

Explanatory Plan to Accompany By Law No. 1786  
 City of Prince George  
 Closing Part of Second Avenue, Adjacent to  
 Lot 16 and Lot 17, Block 21, Plan 1268,  
 District Lot 343, Cariboo District.

**PLOTTED (JM)**  
**Plan No B7920**

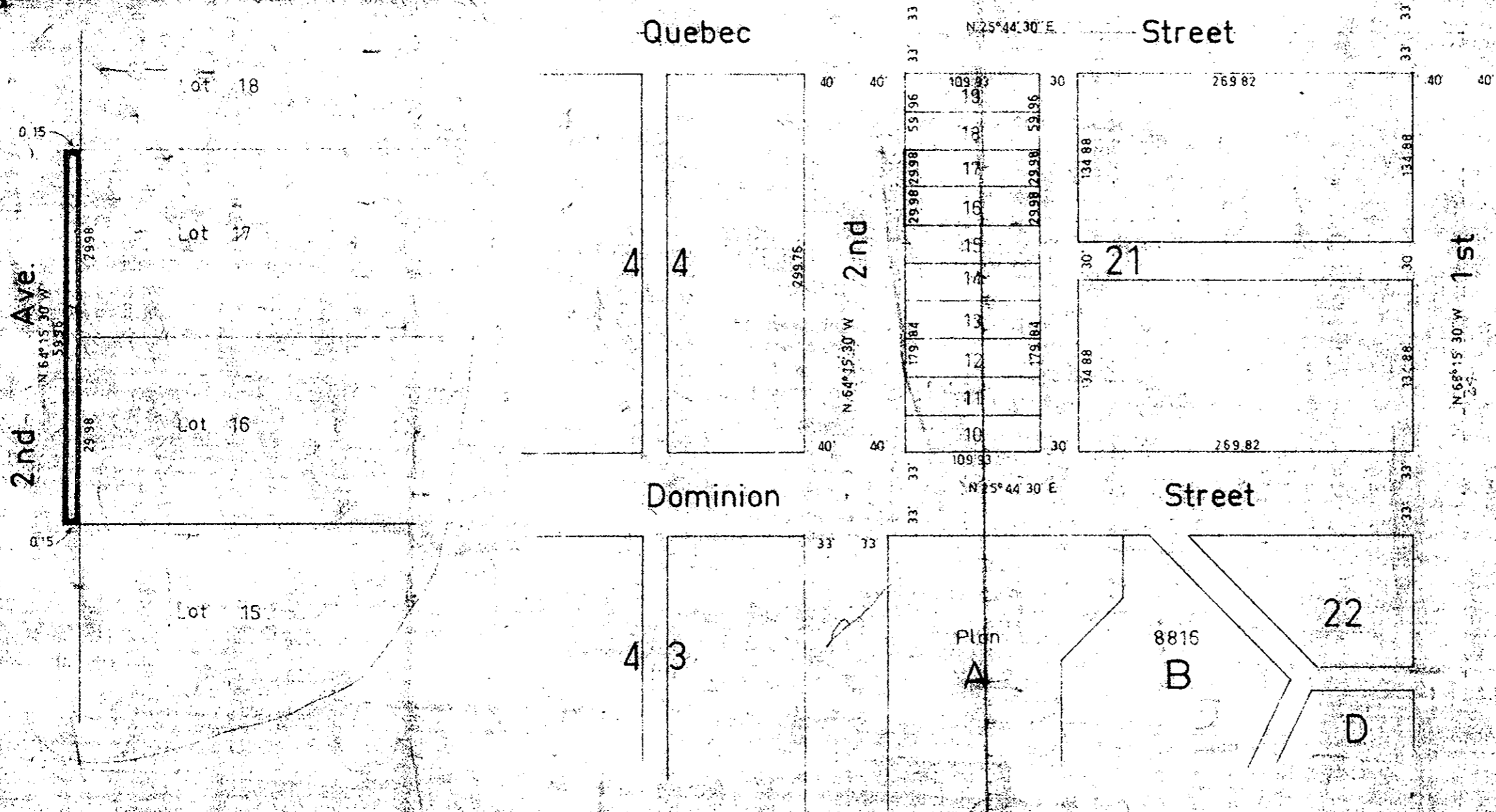
Deposited in the Land Registry Office at Kamloops, B.C.  
 on the 12 day of Nov 1965

*[Signature]*  
 Registrar

Scale 1 inch = 100 feet

Detail

Not to Scale



LEGEND

Bearings are astronomic and are derived from  
 Plan 1268 as N 25° 44' 30" E

Certified Correct  
 This 21st day of August, 1965

*[Signature]*  
 R. J. Goble, S. C. L. S.  
 Surveyor

McWilliam, Whyte, Serle & Goble  
 British Columbia Land Surveyors

Checked,  s.  d.  Ref No. 65219