

PLAN B7908

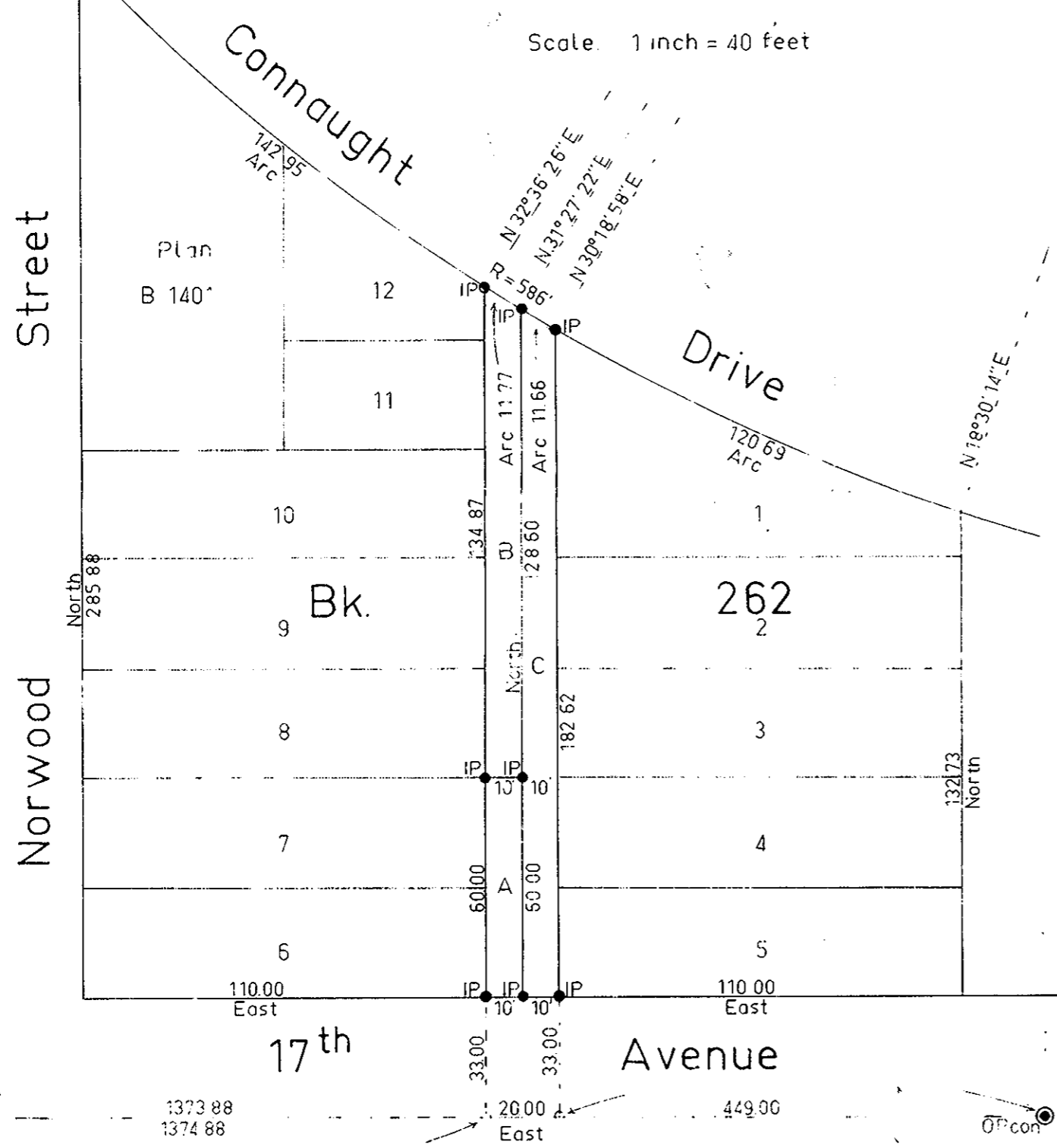
Deposited in the Land Registry Office at Kamloops, B.C.
on the 8th day of OCTOBER 1965.

[Signature]
Registrar

Explanatory Plan to Accompany By-Law No. 1760
City of Prince George, B.C. Closing the Lane in
Block 262, Plan 1268, District Lot 343.

Cariboo District

Scale: 1 inch = 40 feet



RECORDS SECTION

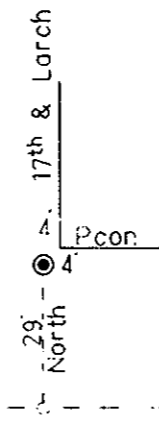
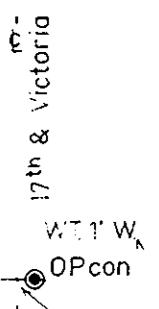
Legend

Bearings are astronomic and are derived from
Plan 1268
Old concrete monuments shown \odot OPcon
Iron posts set shown \bullet IP

Certified Correct.

This 20th day of July 1965.

[Signature]
R. J. Goble, B.C.L.S.



McWilliam, Whyte, Serle, & Goble
British Columbia Land Surveyors

Checked	f	s	d	x	Ref. No. 65100-21
---------	---	---	---	---	-------------------