

EXPLANATORY PLAN TO ACCOMPANY BY-LAW 1738  
 CITY OF PRINCE GEORGE B.C. CLOSING PART OF LANE  
 ADJACENT TO LOTS 1 to 4 INCLUSIVE AND LOTS 15 to 16  
 INCLUSIVE BLOCK 231 PLAN 1268 DISTRICT LOT 343  
 CARIBOO DISTRICT

PLAN No B 7874  
 Deposited in the Land Registry Office  
 at Kamloops on the 26 day of MAY 1965

C. J. SPARRAND  
 Registrar.

170

LEGEND

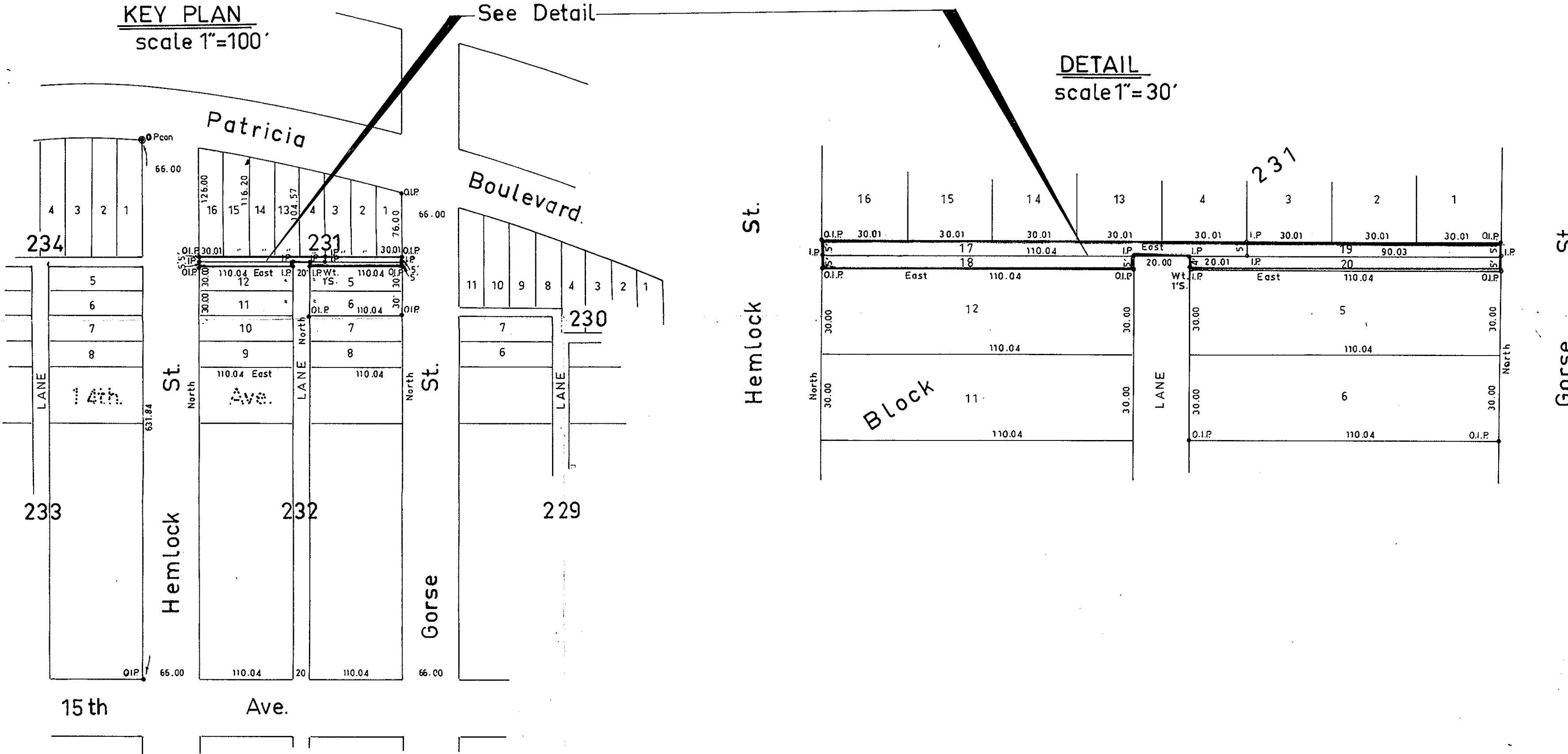
Bearings are astronomic and are derived from Plan 1268

Old iron post found.....shown.....O.I.P.  
 Old concrete post found.....shown.....O.P.Con  
 Iron post set.....shown.....I.P.

KEY PLAN  
 scale 1"=100'

See Detail

DETAIL  
 scale 1"=30'



I, R.J. Goble, of the city of Prince George  
 British Columbia Land Surveyor, make oath and  
 say that I was present at and did personally  
 superintend the survey represented by this  
 plan and that the survey and plan are correct.  
 The said survey was completed on  
 the 20TH day of MARCH 1965

Sworn before me at Prince George B.C.  
 this 23 day of MARCH 1965

[Signature]  
 A Commissioner for taking oaths  
 within British Columbia.

McWilliam, Whyte, Serle & Goble  
 British Columbia Land Surveyors  
 1595 5th Ave. Prince George B.C.

Checked	F	S	D	X	Ref. No. G5100-9
---------	---	---	---	---	------------------