

Explanatory Plan to accompany By-Law No. 1723
 City of Prince George, B.C. Closing part of
 Wells Street between S.E. 1/2 block 118 and
 S.E. 1/2 block 122 Plan 1268 DL 343

PLAN B 7859

Detail

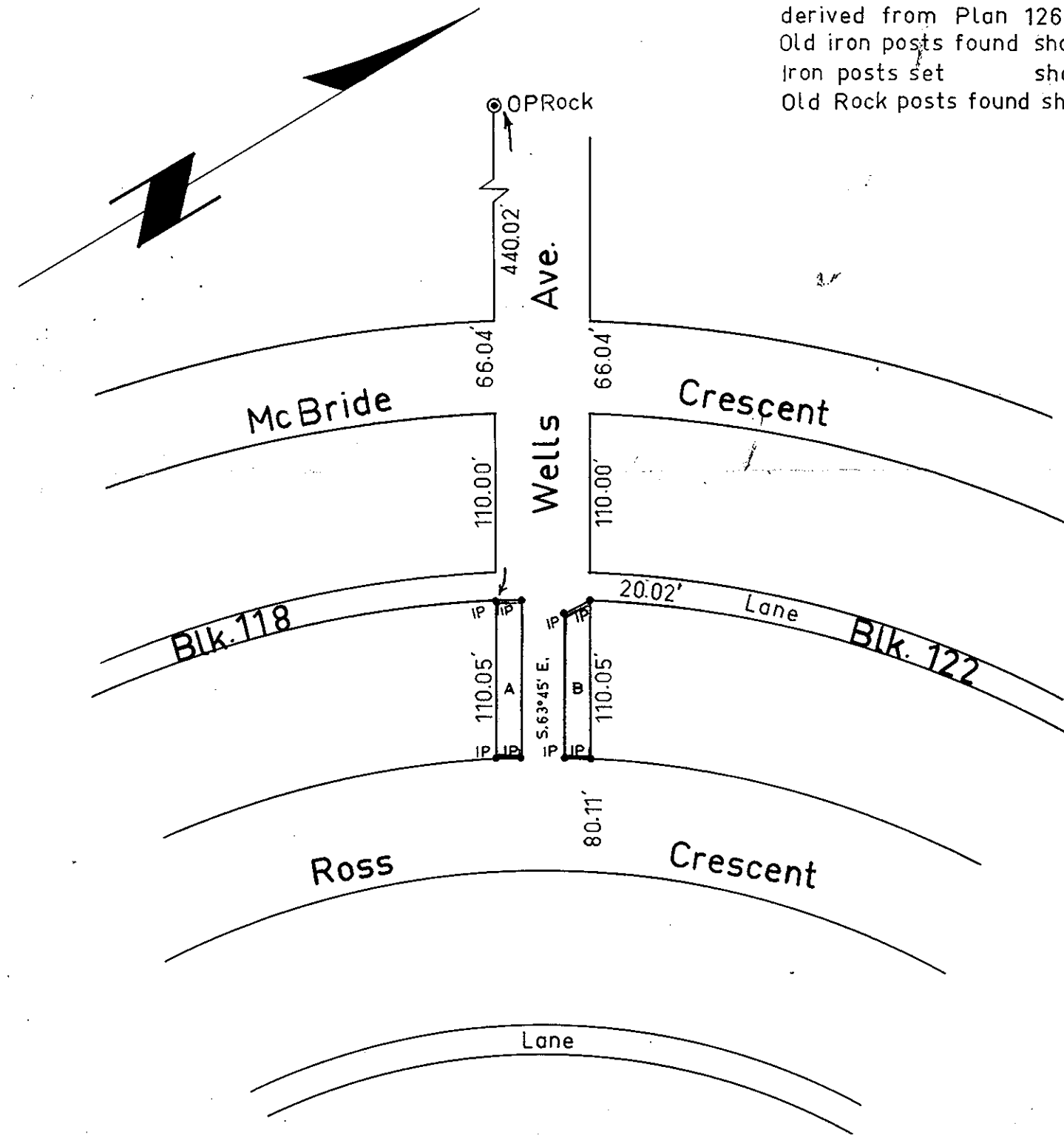
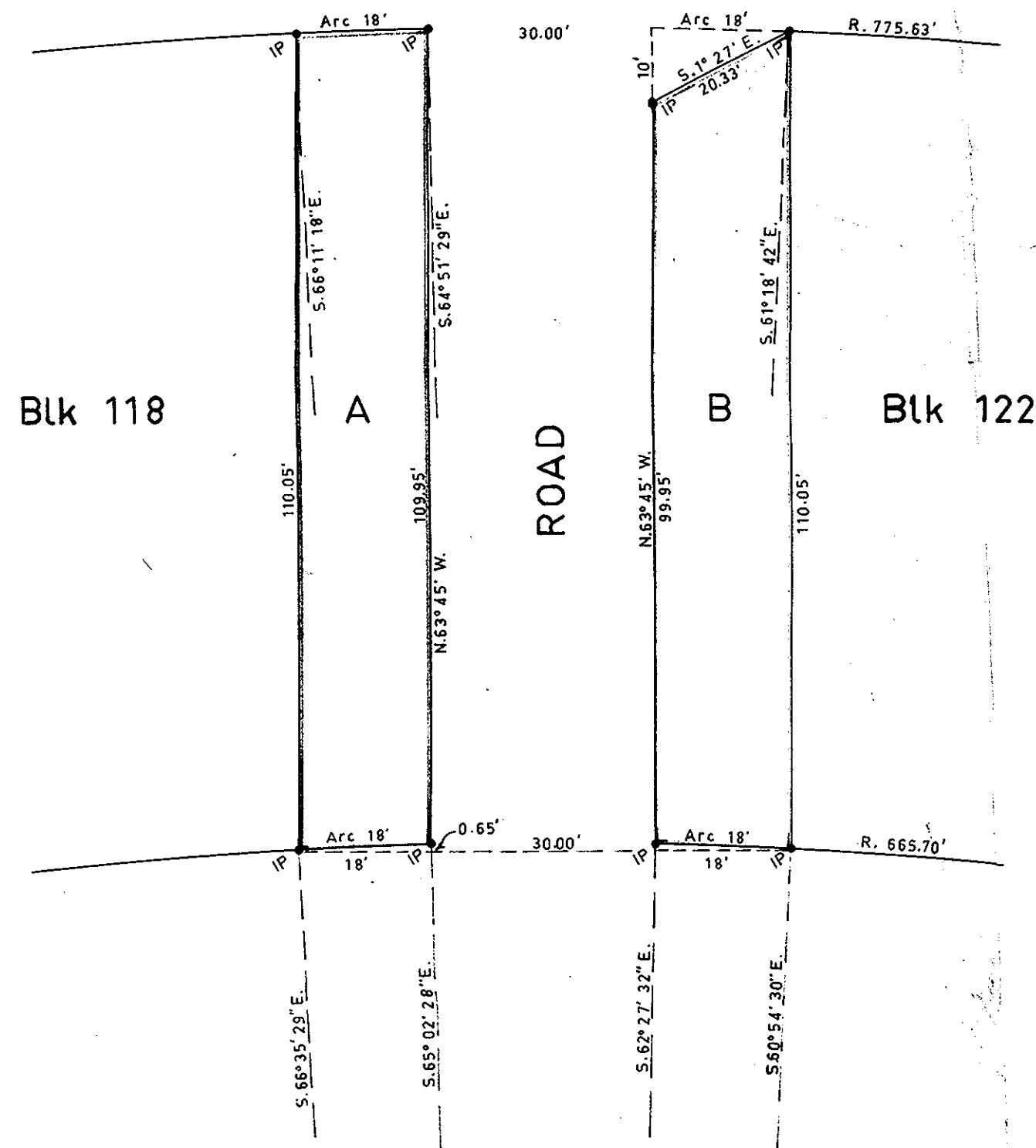
Scale: 1" = 20'

Scale: 1" = 100'

Deposited in the Land Registry
 Office at Kamloops B.C.
 this 24 day of March 1965.

Handwritten signature
 Registrar

LEGEND
 Bearings are astronomic and are
 derived from Plan 1268
 Old iron posts found shown • OIP
 Iron posts set shown • IP
 Old Rock posts found shown ⊙ OP



key plan

Certified Correct
 this 4th day of Feb. 1965.

Handwritten signature

R. J. Goble, B.C.L.S.

McWilliam, Whyte, Serle, & Goble
 British Columbia Land Surveyors

Checked	f	s	d	x	REF. NO. 65100-4
<i>ll.</i>					