

EXPLANATORY PLAN TO ACCOMPANY BY-LAW
 NO. 1722, CITY OF PRINCE GEORGE, B.C.
 CLOSING PART OF 16th AVE. BETWEEN BLOCKS
 239 AND 257. PLAN 1268, D.L. 343.

Plan No. **B7858**

Deposited in the Land Registry
 Office at Kamloops B.C.
 this 24 day of MARCH 1965.

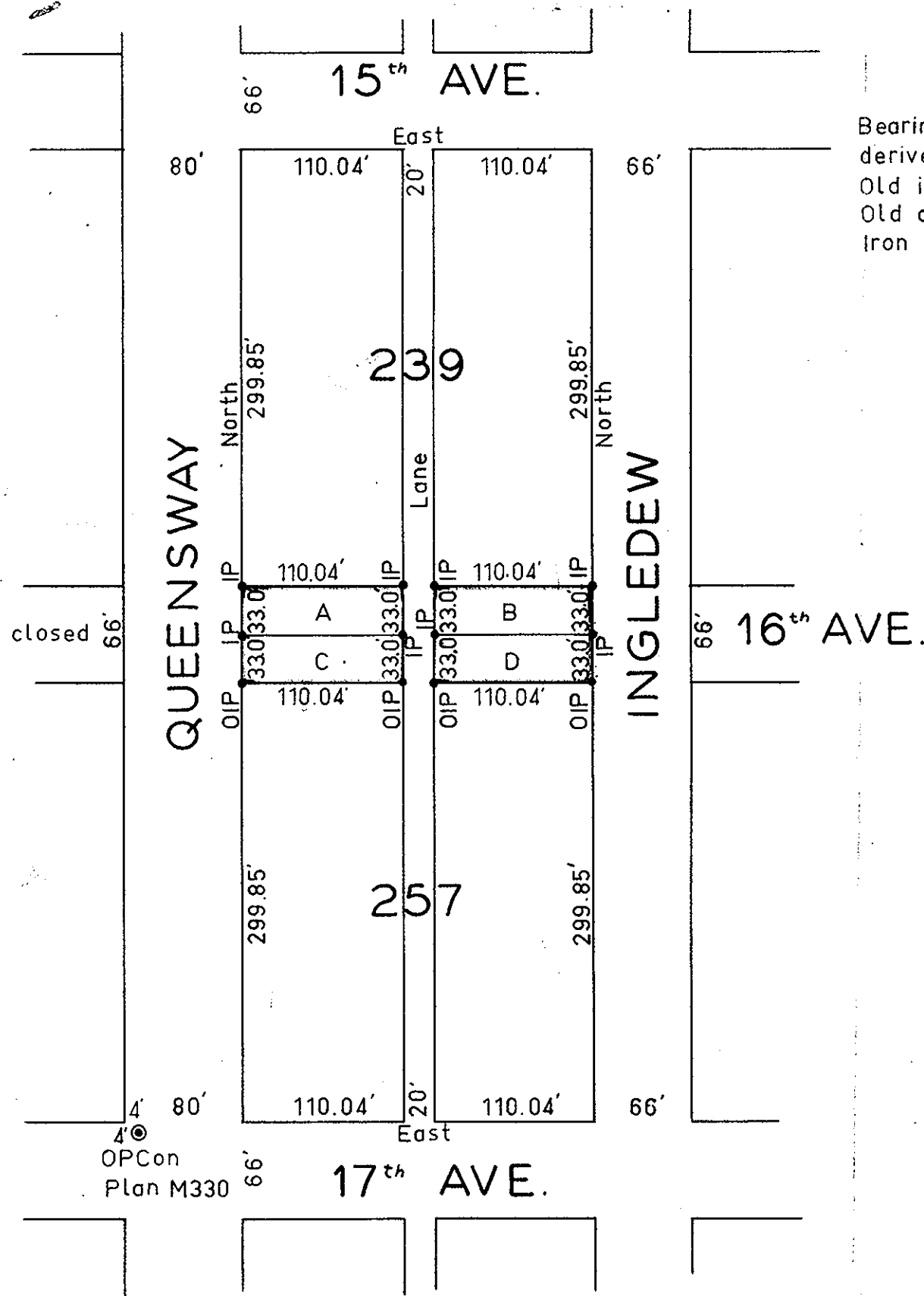
CARIBOO DISTRICT. SCALE: 1" = 100'

[Signature]
 Registrar

Legend

Bearings are astronomic and are
 derived from Plan 1268.
 Old iron post found shown
 Old concrete monuments shown
 iron posts set shown

- OIP
- ⊙ OPCon
- IP



Certified Correct
 this 26th day of JAN. 1965.
[Signature]
 R.J. Goble, B.C.L.S.

McWilliam, Whyte, Serle, & Goble
 British Columbia Land Surveyors

Checked	f	s	d	x	REF. NO 65100-2
---------	---	---	---	---	-----------------