

Explanatory Plan to Accompany By-Law No. 1649  
 of the City of Prince George,  
 Closing Part of Perry Circle,  
 Plan 1268, District Lot 343, Cariboo District.  
 Scale: 1 inch = 50 feet

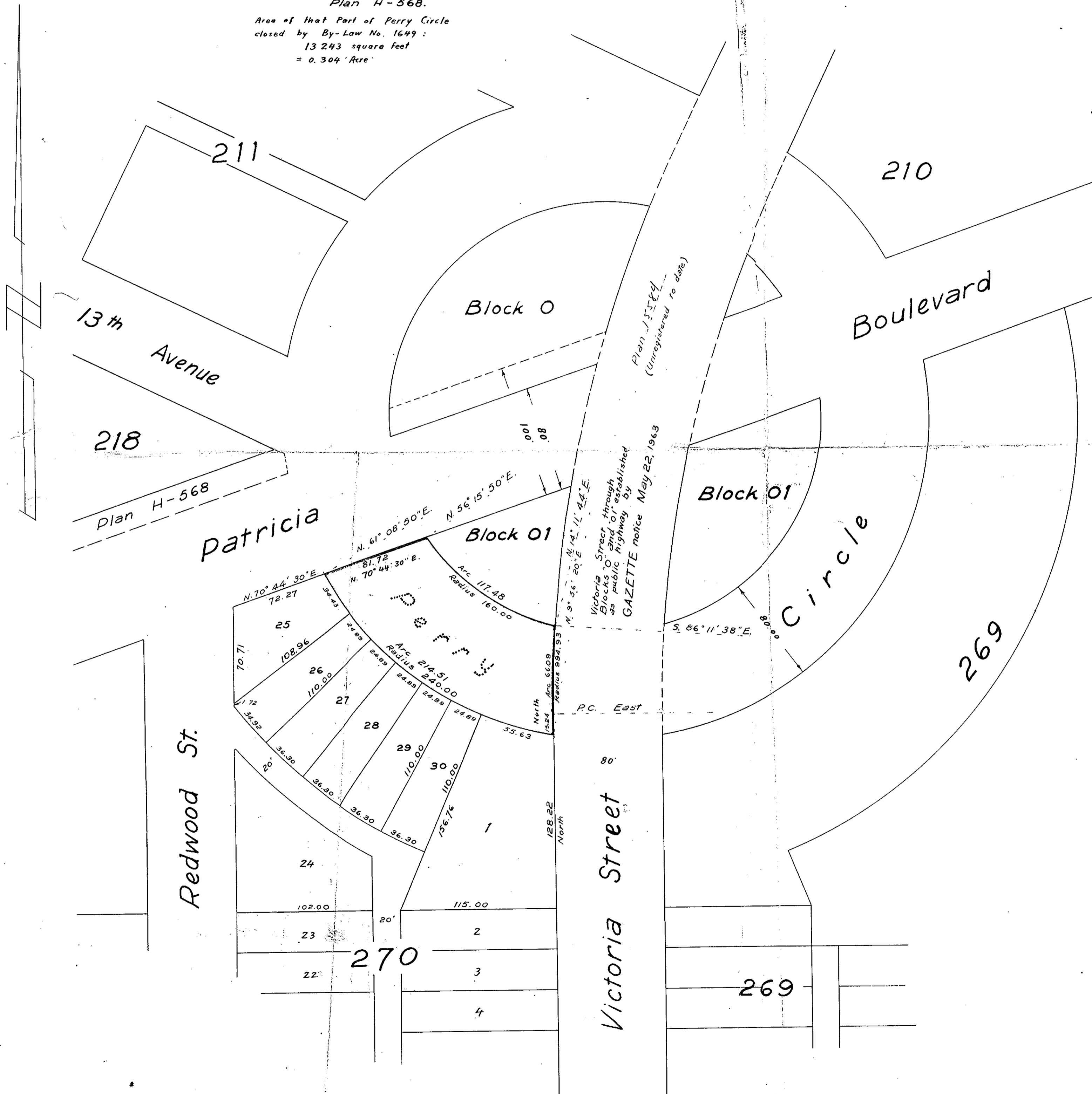
Plan No B77-88

Deposited in the Land Registry Office at Kamloops, B.C.  
 this 17 day of July 1964

*Chapman*  
 Registrar

Bearings are astronomic, derived from  
 Plan H-568.

Area of that Part of Perry Circle  
 closed by By-Law No. 1649:  
 13 243 square feet  
 = 0.304 Acre



Certified correct according to  
 information shown on Plans 1268  
 and H-568.

this 24<sup>th</sup> day of April 1964

*Werner Segnitz*  
 Werner Segnitz, B. C. L. S.

McWilliam, Whyte, Serle & Goble  
 British Columbia Land Surveyors

Checked F S D X Ref. No. 64 100-H