

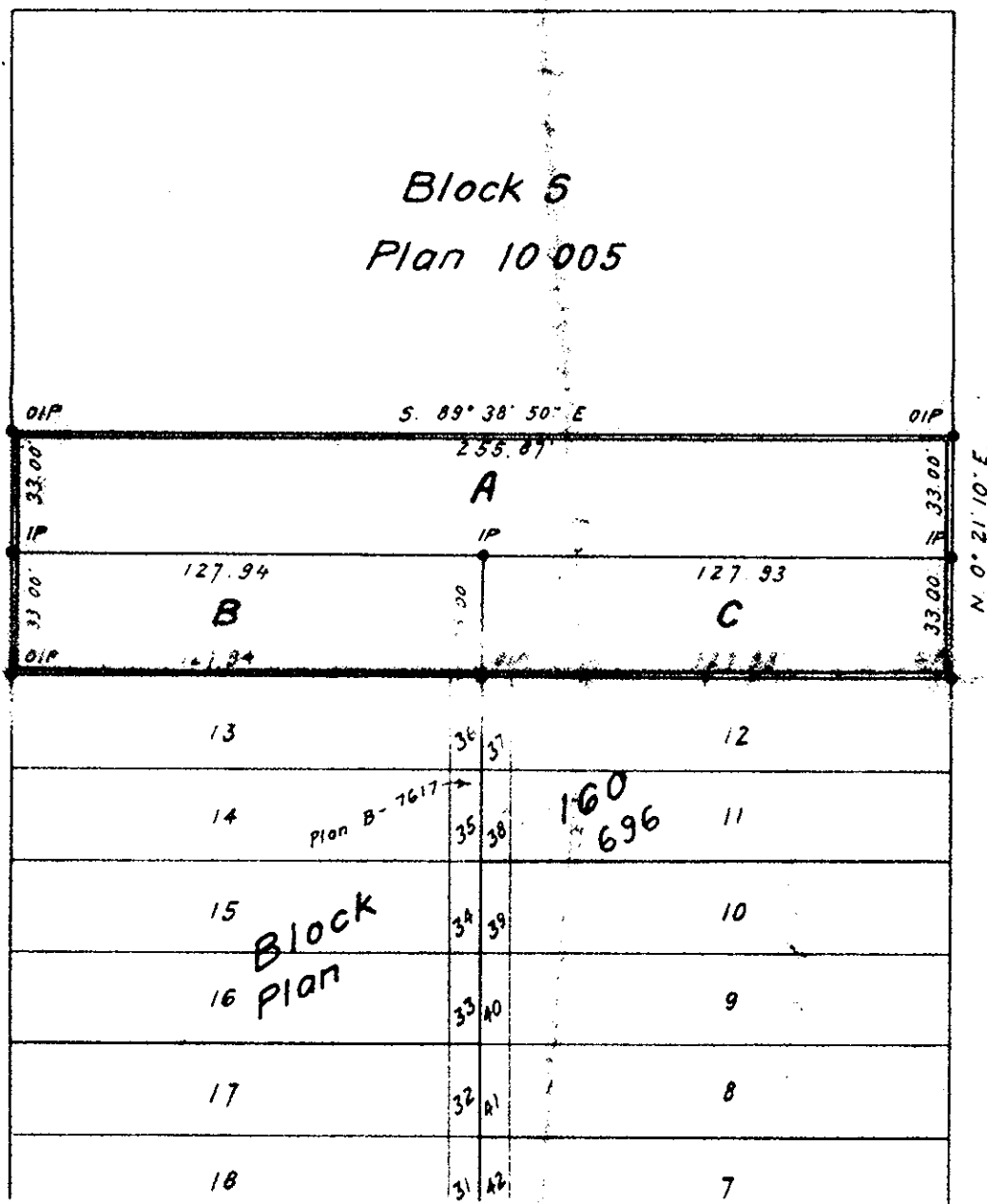
Explanatory Plan to Accompany By-Law No 1588 Plan No B 7768
 City of Prince George, B.C., Closing Part of 16th Avenue,
 Plan 696, District Lot 936, Cariboo District
 Scale: 1 inch = 50 feet

Deposited in the Land Registry Office at Kamloops B.C.
 this 7. day of FEB. 19 64

[Signature]
 Registrar

Legend

Bearings are astronomic and are derived from
 the South boundary of Block 5, Plan 10005, as S 89° 38' 50" E.
 Old Iron Posts found, shown • OIP
 Iron Posts set shown • IP



Central Street
 Plan H-700

Johnson Street

Certified correct
 this 16th day of September 1963

[Signature]
 Werner Segnitz, B.C.L.S.

McWilliam, Whyte, Serle & Goble
 British Columbia Land Surveyors

checked 1 / 5 / 0 x Ref. No 63100 - F