

Reference Plan of Part of
Block A, Plan B 6366,
District Lot 4039, Cariboo District

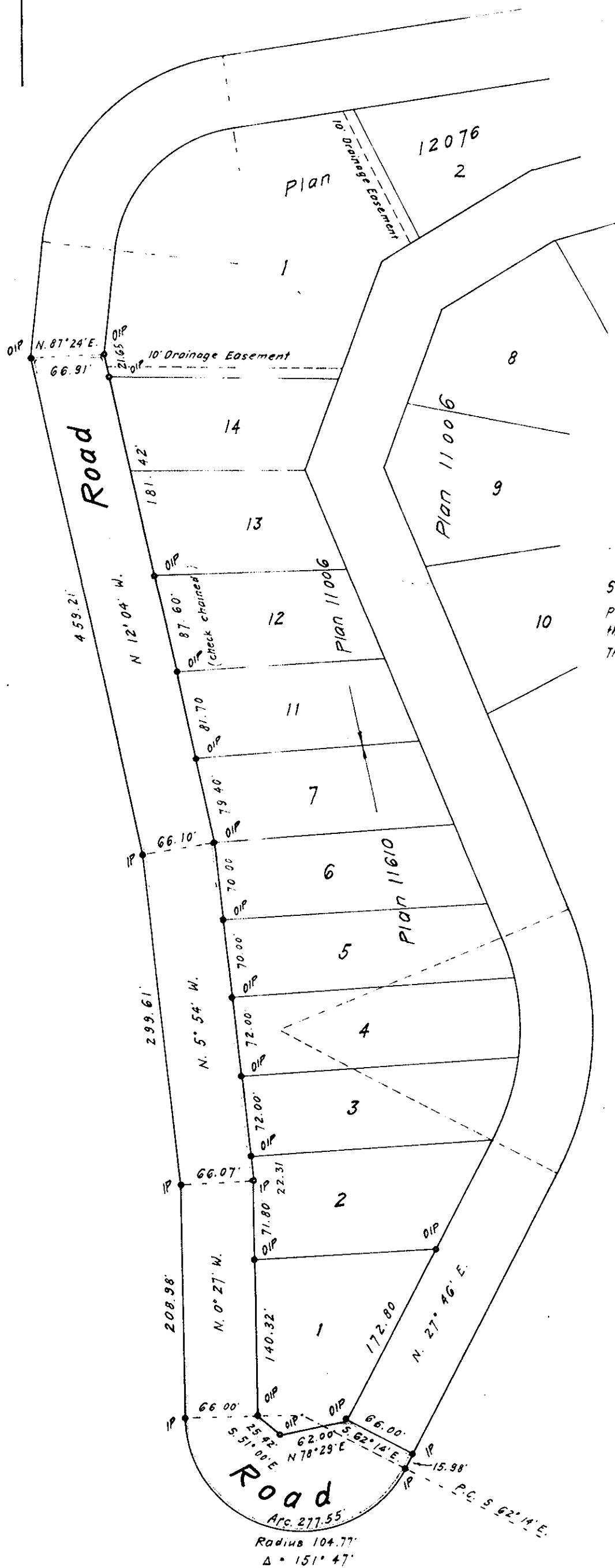
Plan No B7753

Deposited in the Land Registry Office at Kamloops
this 23 day of Dec 1963 B.C.

Scale: 1" = 100'

Legend Bearings are astronomic and are
derived from the West boundary of
Lot 1, Plan 11 610.
Old Iron Post found shown • OIP
Iron Post set, shown • IP

Chas. H. Stewart
Registrar



I W.C. Serle, of the City of Prince George, British Columbia Land
Surveyor make oath and say that I was present at and did
personally superintend the survey represented by this plan and that
the survey and plan are correct
The said survey was completed on the 9th of July 1963

W.C. Serle
B.C.L.S.

Sworn before me
this 9 day of July 1963

W.C. Serle
A Commissioner for taking affidavits
within British Columbia

Approved under the Land Registry Act
this 11th day of September 1963.

W.C. Serle
Approving Officer
Dept. of Highways, Prince George, B.C.

M. McBeath
Owner

W.C. Serle
Witness

McWilliam, Whyte, Serle & Goble
British Columbia Land Surveyors

checked F S D X Ref. No 63048-B
1 1 1 2