

Explanatory Plan to Accompany By-Law No. 1572,  
 City of Prince George, B. C.,  
 Closing Part of the Lane in Block 154, Plan 1268,  
 District Lot 343, Cariboo District

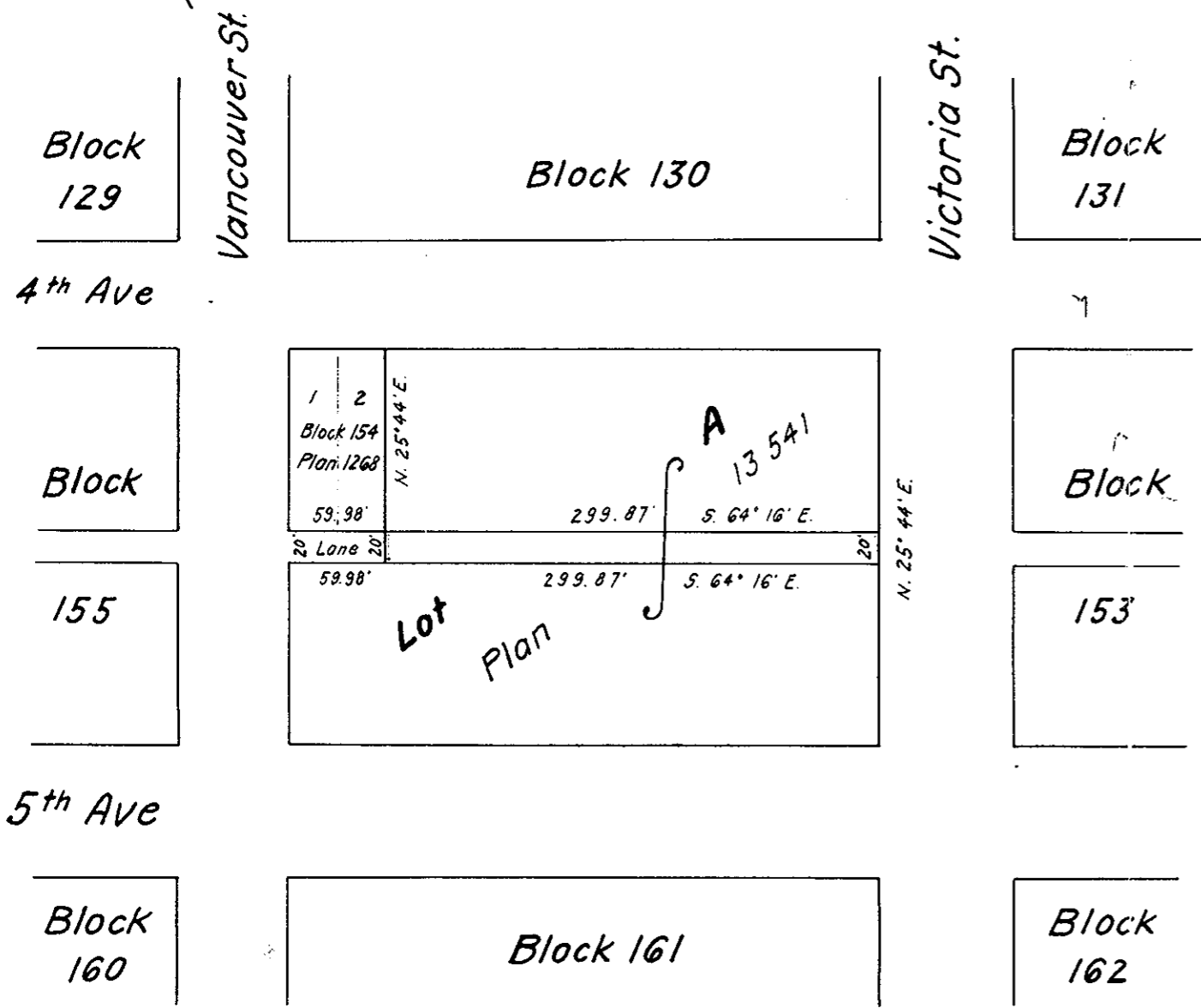
Scale: 1" = 100'

Bearings are astronomic, derived from Plan 1268.

Plan No B 7 7 4 3

Deposited in the Land Registry Office at Kamloops, B.C.  
 this 26 day of Nov 1963.

*Chapman*  
 Registrar



Certified Correct  
 according to information shown  
 on Plans 1268 and 13541  
 this 28th day of October 1963

*Werner Segnitz*  
 Werner Segnitz, B.C.L.S.

Mc William, Whyte, Serle & Goble  
 British Columbia Land Surveyors

checked  F  S  D  X Ref. No 62196-B