

Explanatory Plan to Accompany By-Law No 1595 Plan No B774
 City of Prince George, B.C., Closing Lane Adjacent to Lots 14 to 18,
 Block 59, Plan 1268, District Lot 343,

Cariboo District

Scale: 1 inch = 50 feet

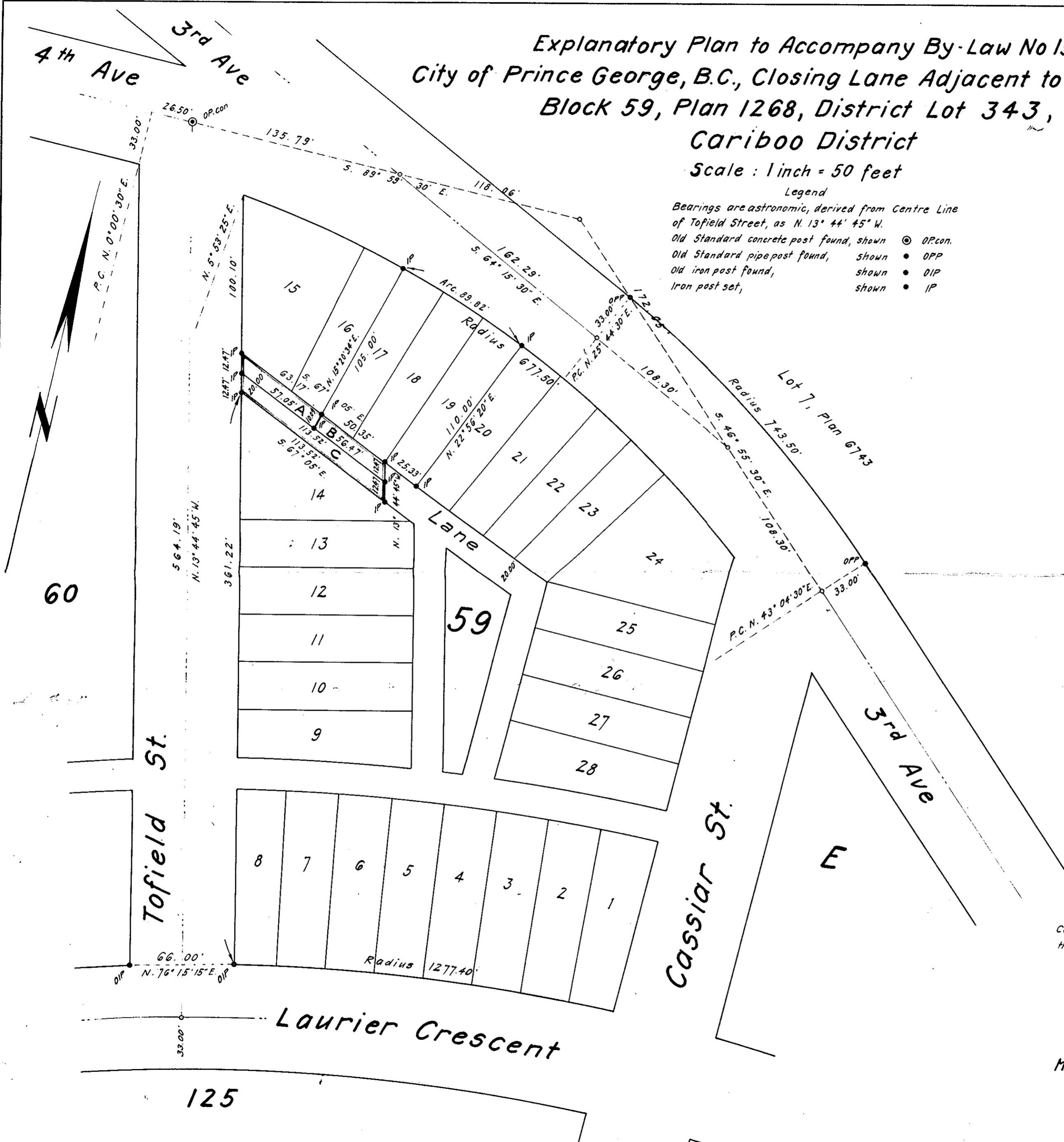
Deposited in the Land Registry office at
 Kamloops, B.C. this 6 day of Nov 1963

[Signature]
 Registrar

Legend

Bearings are astronomic, derived from Centre Line
 of Tofield Street, as N. 13° 44' 45" W.

- Old Standard concrete post found, shown \odot OP.con.
- Old Standard pipe post found, shown \bullet OPP
- Old iron post found, shown \bullet OIP
- Iron post set, shown \bullet IP



Certified correct
 this 26th day of September 1963.

[Signature]
 R.J. Goble, B.C.L.S.

McWilliam, Whyte, Serle & Goble
 British Columbia Land Surveyors