

Explanatory Plan to Accompany By-Law No. 1589,
City of Prince George, B.C., Closing Part of
Harper Street, Plan 696, District Lot 936,

Cariboo District

Scale: 1" = 100'

Plan B 7722

Deposited in the Land Registry Office
at Kamloops, B.C.

this 13 day of Aug. 1963

M. J. Steward
Registrar

Legend

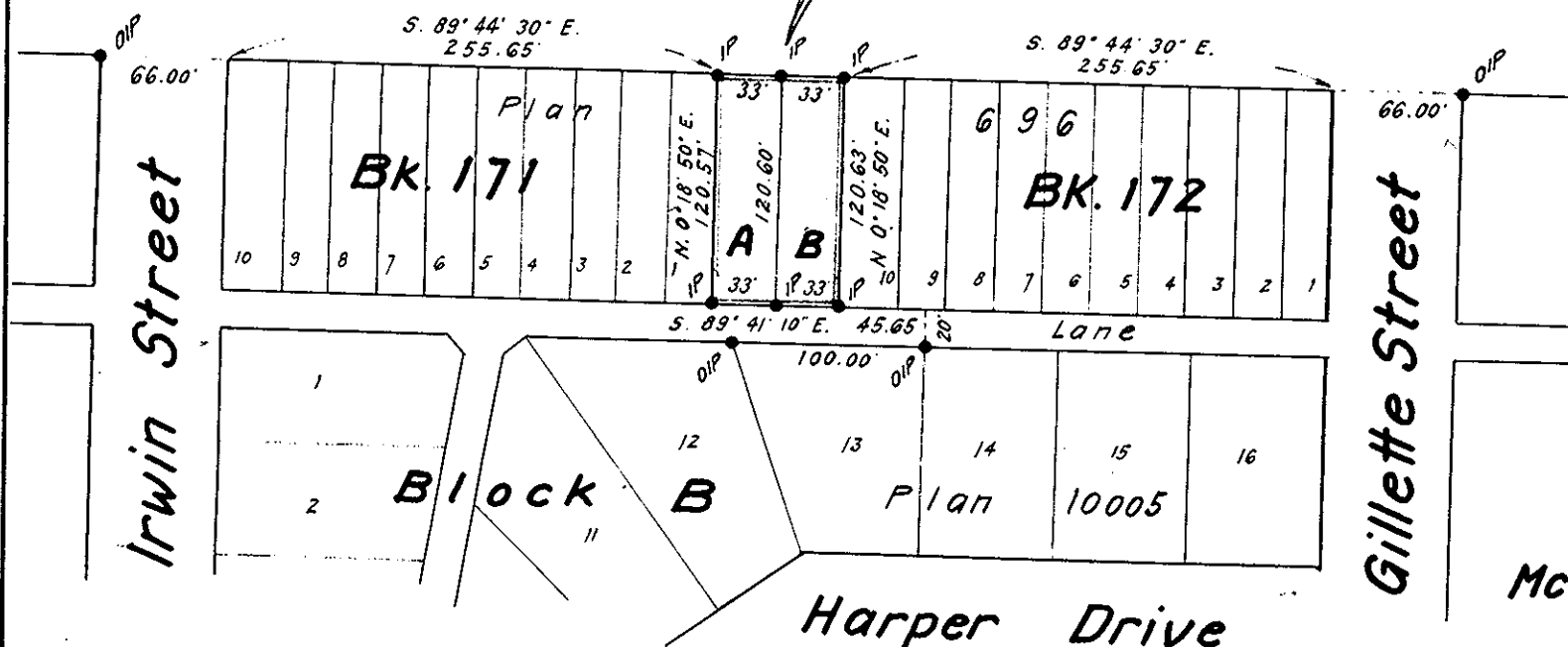
Bearings are astronomic and are derived
from Plan 10005.

Old iron post found, shown • OIP

Iron post set, shown • IP

15th Avenue

T.M.K.
Storm sewer to go
Three here in 1964
where, on centre line? B. J. Goble



Certified Correct
this 8th day of July 1963

R. J. Goble

R. J. Goble, B.C.L.S.

Mc William, Whyte, Serle & Goble
British Columbia Land Surveyors

checked	f	s	D	x

Ref. No 63100-6