

Explanatory Plan to Accompany By-Law No 1263,  
 City of Prince George, B.C., Closing Part of 11<sup>th</sup> Ave,  
 Plan 696, District Lot 936, Cariboo District

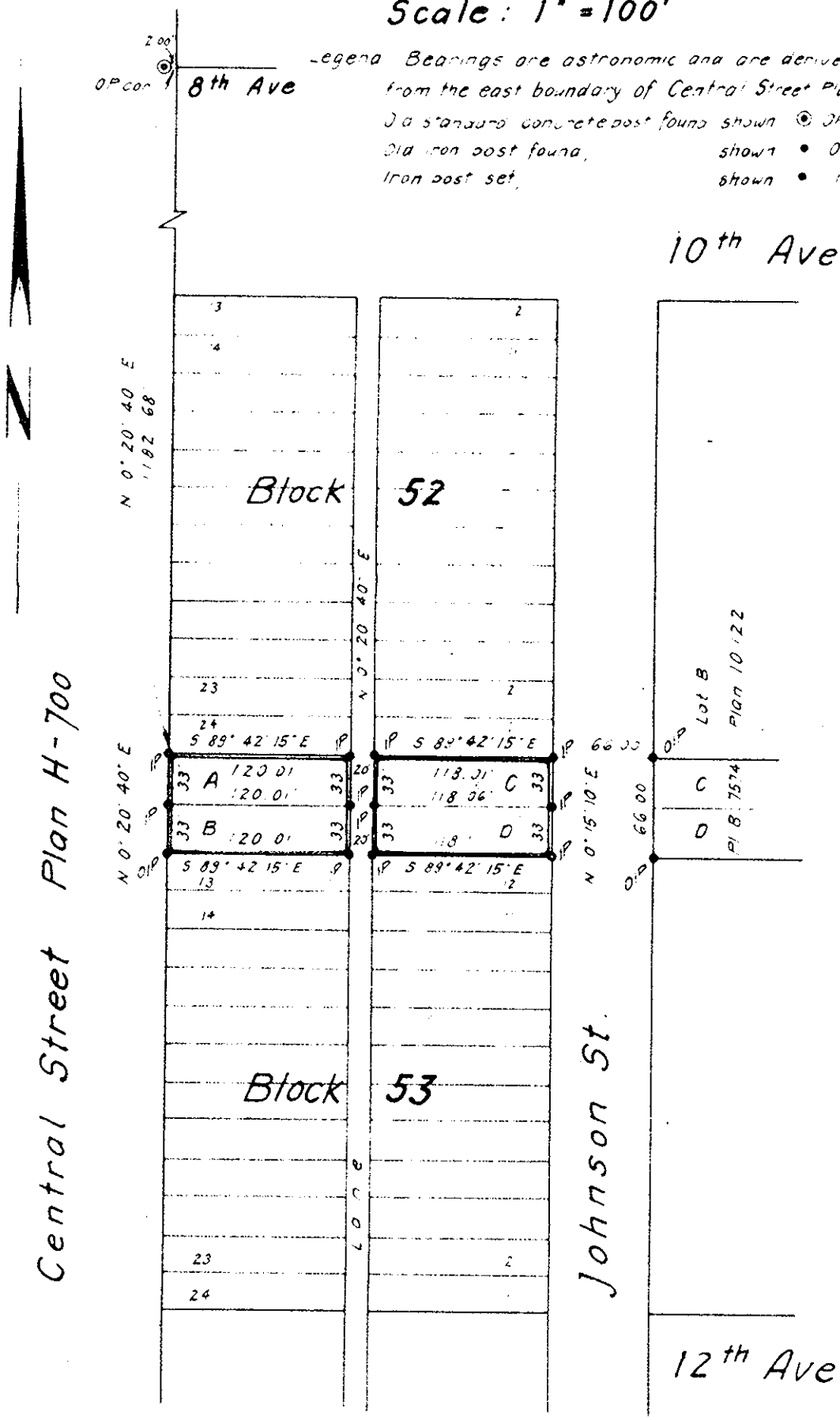
Plan B7721

Registered in the Land Registry Office at Kamloops B.C.  
 this 13<sup>th</sup> day of Aug. 1963

*Shirley Farnham*  
 Registrar

Scale: 1" = 100'

Legend Bearings are astronomic and are derived  
 from the east boundary of Central Street Plan H-700  
 Old standard concrete post found shown  $\odot$  OP con  
 Old iron post found, shown  $\bullet$  OP  
 Iron post set, shown  $\bullet$  IP



Certified Correct  
 this 15<sup>th</sup> day of July 1963

*[Signature]*

R J Goble, B.C.L.S.

Mc William, Whyte, Serle & Goble  
 British Columbia Land Surveyors

checked  s  d  x  Ref. No 63100-E