

Explanatory Plan to Accompany By-Law No 1585,
 City of Prince George, B.C., Closing Part of 18th Avenue,
 Plan 1268, District Lot 343, Cariboo District.

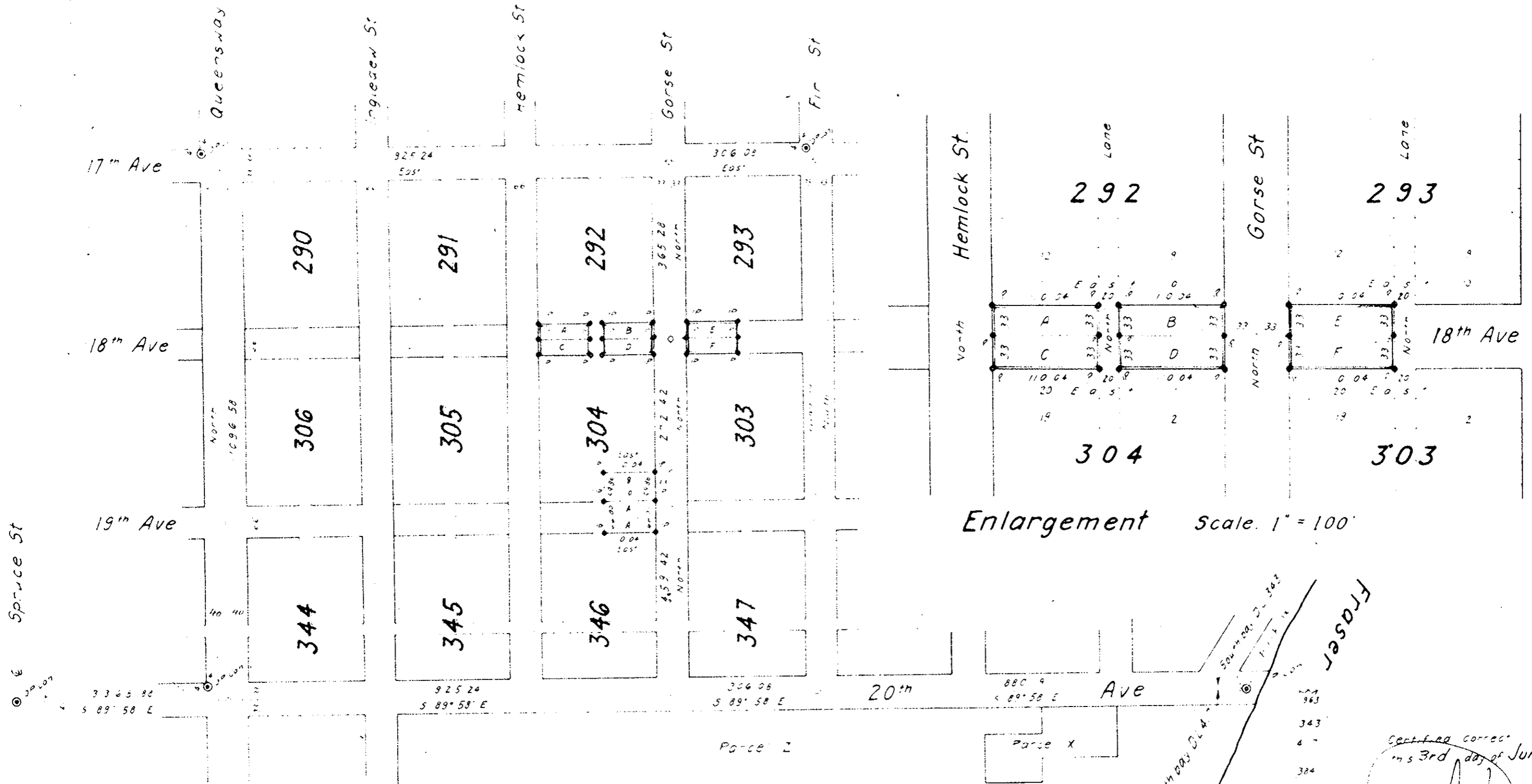
Scale 1" = 200'

Legend: Bearings are astronomic and are derived from the
 Centre Line of 17th Avenue, shown as East on
 Plans 1268 and M 335.
 Old Standard concrete post found shown: (C) CP Con
 Standard concrete post set shown: (S) PC Con
 Iron post set shown: (I) P

Plan B7719

Deposited in the Land Registry Office at Kamloops B.C.
 this 9th day of Aug 1963

Deputy Registrar



Enlargement Scale 1" = 100'

D.L. 417

Certified Correct
 this 3rd day of June 1963

J. Goble, B.C.L.S.

McWilliam, Whyte, Serle & Goble
 British Columbia Land Surveyors

checked 5 5 5 Ref No 63100-D