

Explanatory Plan to Accompany By-Law No. 1487
 Closing Part of 17th Avenue, City of Prince George, B.C.
 Plan 1268, District Lot 343, Cariboo District

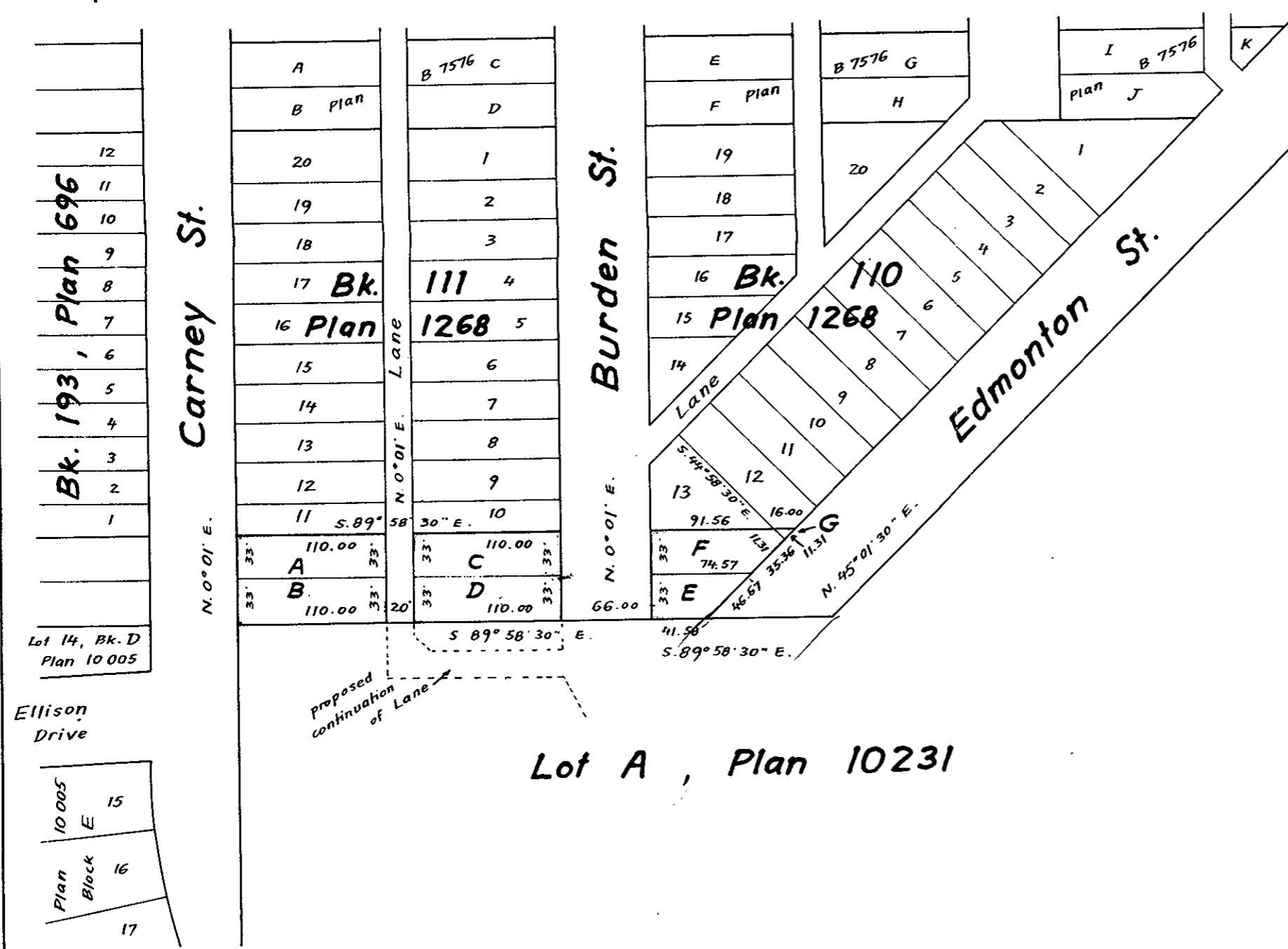
Scale 1" = 100'

Bearings are astronomic derived
 from Plan 10231.

PLAN B-7584

Deposited in the Land Registry Office at Kamloops, B.C.,
 this 13th day of November 1961.

Chas. H. ...
 Registrar



Certified Correct
 according to information shown
 on Plans 1268 and 10231
 this 26th day of October 1961
[Signature]
 B.C.L.S.

McWilliam, Whyte, Serle & Goble
 British Columbia Land Surveyors

Ref. No. 61100 - J