

PLOTTED (HL)
K 24

EXPLANATORY PLAN TO ACCOMPANY
BY-LAW No. 1457, CITY OF PRINCE GEORGE B.C.
CLOSING PART OF 11TH AVENUE, PLAN 646
DISTRICT LOT 1429, CARIBOO DISTRICT

PLAN B-7574

Deposited in the Land Registry
Office at Kamloops B.C.
this 19th day of Sep^r 1961.

Chapman
Registrar

SCALE: 1" = 50'

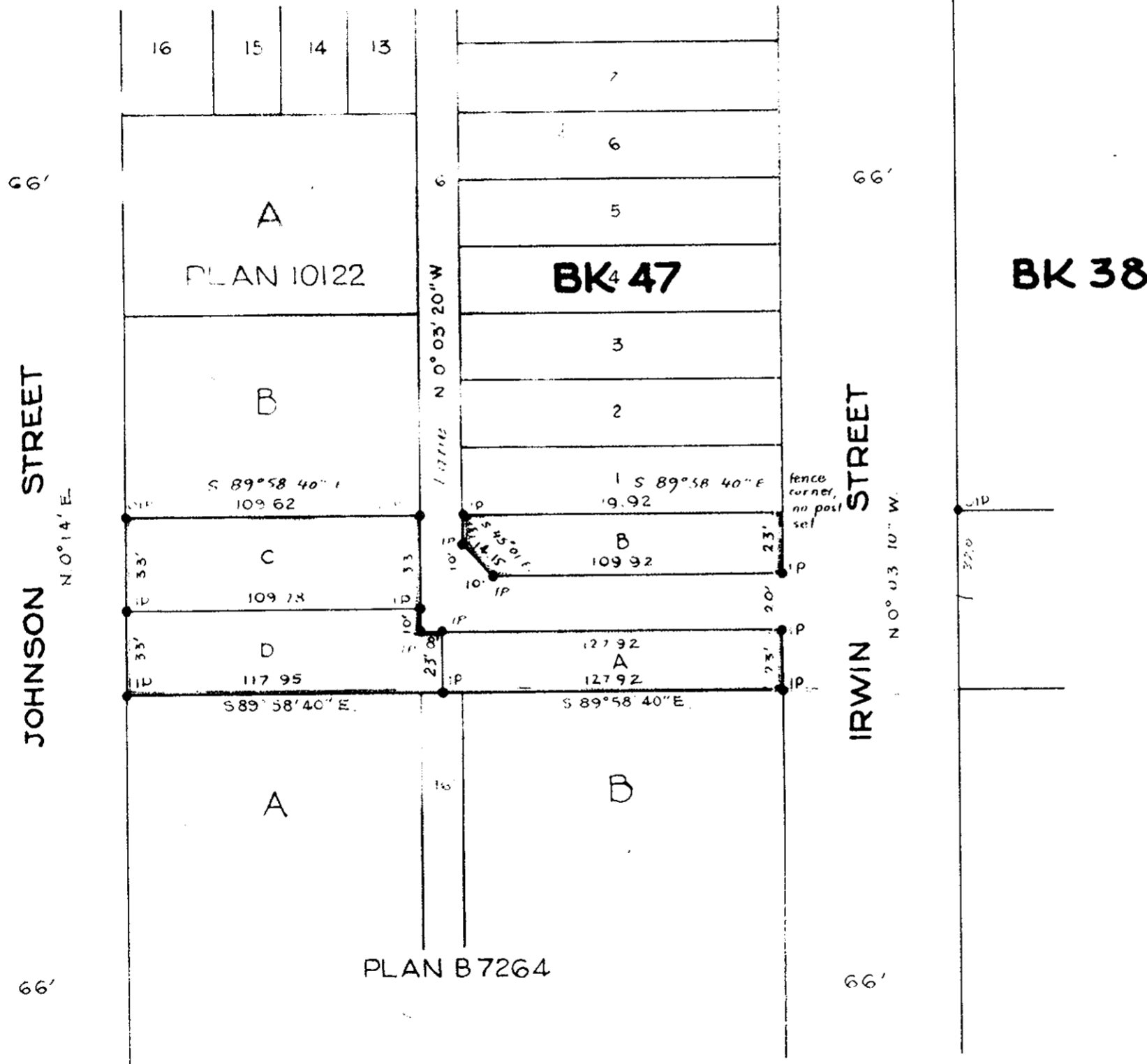
LEGEND

Bearings are astronomic and were derived
from OIP's on South boundary of Lot B Plan 10122
as shown as S 89° 58' 40" E
Old iron pins found shown ● OIP
Iron pins set shown ● IP

BK 52

11TH AVE

BK 53



I, R J Goble of the city of Prince George, British
Columbia Land Surveyor, make oath and say that
I was present at and did personally superintend
the survey represented by this plan and the survey
and plan are correct. The said survey was completed
on the 19th day of JULY, 1961

R J Goble
B.C.L.S.

Sworn before me at the city of Prince George B.C.
this 20th day of July, 1961

W. Serle
A Commissioner for taking Affidavits within
British Columbia

M^cWILLIAM, WHYTE, SERLE & GOBLE
BRITISH COLUMBIA LAND SURVEYORS REF. No. 61100F