

EXPLANATORY PLAN TO ACCOMPANY PLOTTED (JL)

BY-LAW N^o1426 City of Prince George, B.C.
 CLOSING PART OF 16 AVENUE, PLAN 1268
 DISTRICT LOT 343, CARIBOO DISTRICT.

PLAN B-7547

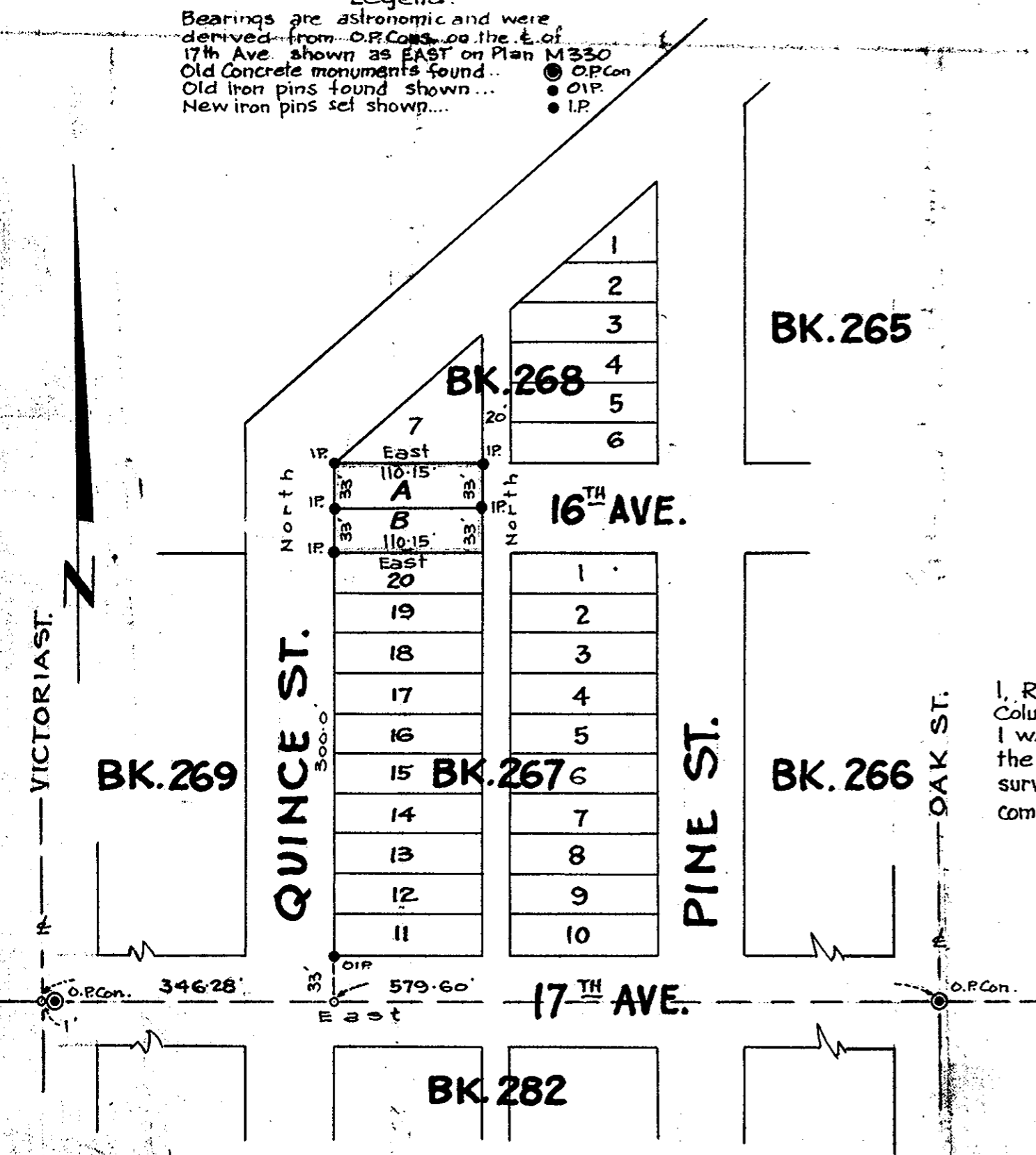
Deposited in the Land Registry
 office at Kamloops, B.C. this 1ST
 day of MAY 1961.

[Signature]
 Registrar.

Scale: 1" = 100'

Legend:

Bearings are astronomic and were
 derived from O.P. Cons. on the E. of
 17th Ave. shown as EAST on Plan M330
 Old Concrete monuments found... ● O.P. Con.
 Old iron pins found shown... ● O.I.P.
 New iron pins set shown... ● I.P.



I, R. J. Goble of the city of Prince George, British
 Columbia Land Surveyor, make oath and say that
 I was present at and did personally superintend
 the survey represented by this plan and that the
 survey and plan are correct. The said survey was
 completed on the 14th of April 1961.

[Signature]
 B.C.L.S.

Sworn before me at the city of
 Prince George, B.C. this 19 day of April 1961.

[Signature]
 A Commissioner for taking Affidavits
 within British Columbia.

McWilliam, Whyte, Serle & Goble
 British Columbia Land Surveyors
 Ref. N^o 61100-D