

**EXPLANATORY PLAN TO ACCOMPANY  
BY-LAW NO 1426 City of Prince George, B.C.  
CLOSING PART OF 16 AVENUE, PLAN 1268  
DISTRICT LOT 343, CARIBOO DISTRICT.**

40815

**PLAN B-7546**

Deposited in the Land Registry  
office at Kamloops, B.C. this 19<sup>th</sup>  
day of MAY 1961.

*Handwritten:* City of Prince George

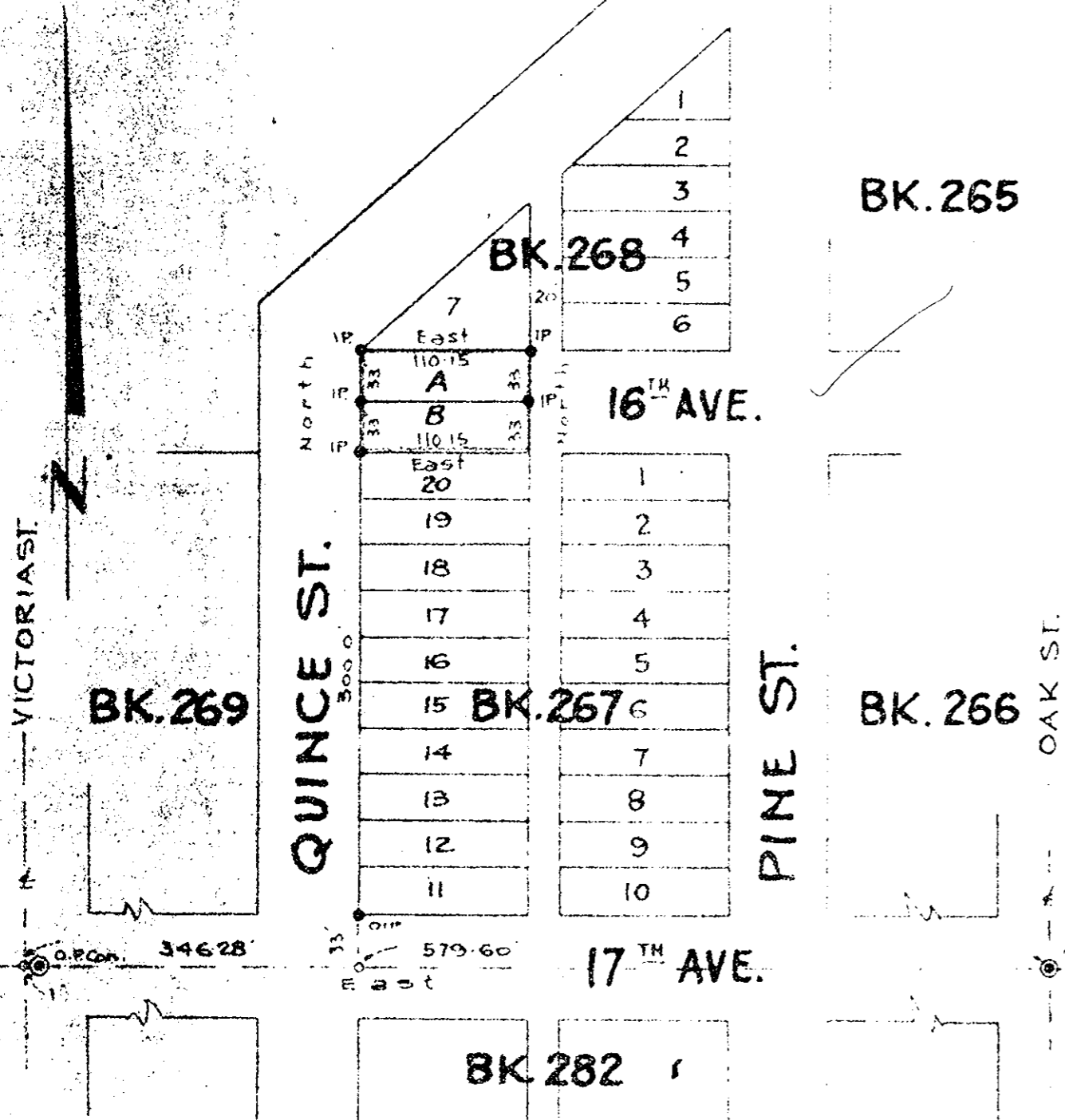
Scale 1" = 100'

**Legend**

Bearings are astronomic and were  
derived from O.P. Cons. on the E. of  
17th Ave shown as EAST on Plan M3301  
Old Concrete monuments found...  
Old iron pins found shown...  
New iron pins set shown...

● O.P. Con.  
● O.I.P.  
● I.P.

Registrar



I, R. J. Goble of the city of Prince George, British  
Columbia Land Surveyor, make oath and say that  
I was present at and did personally superintend  
the survey represented by this plan and that the  
survey and plan are correct. The said survey was  
completed on the 14th of April 1961.

*Signature of R. J. Goble*  
B.C.L.S.

Sworn before me at the city of  
Prince George, B.C. this 19<sup>th</sup> day of April 1961.

*Signature of Commissioner*  
A Commissioner for taking affidavits  
within British Columbia.

McWilliam, Whyte, Serle & Goble  
British Columbia Land Surveyors  
Ref No. 61100-D