

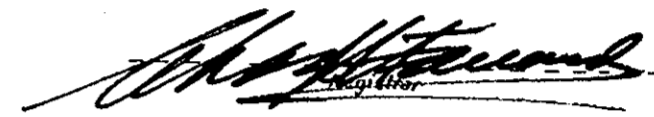
Key Plan Scale 1" = 200'

Block Y
"Connaught Park"

Explanatory Plan to Accompany
By-Law No. 1428, City of Prince George, B.C.
Closing Part of Connaught Drive
Plan 1268, District Lot 343, Cariboo District
Scale 1" = 50'

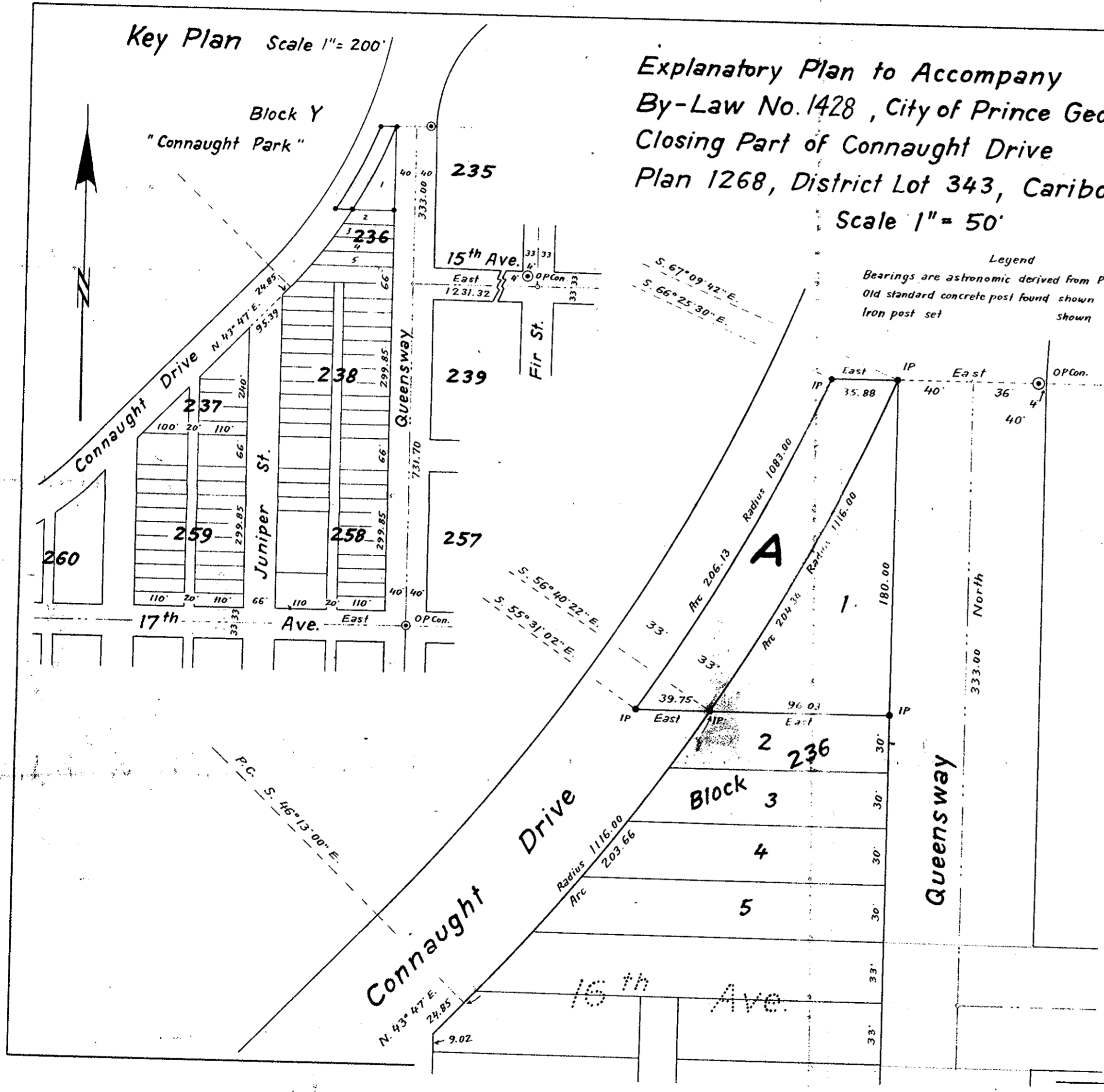
PLAN B-7544

Deposited in the Land Registry Office at Kamloops, B.C.,
this 25th day of April, 1961.



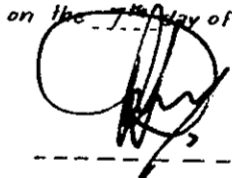
Legend

Bearings are astronomic derived from Plan 1268.
Old standard concrete post found shown \odot OPCon.
Iron post set shown \bullet IP



I, R.J. Goble, of the city of Prince George, British Columbia Land Surveyor,
make oath and say that I was present at and did personally superintend the
survey represented by this plan and that the survey and plan are correct.
The said survey was completed on the 1st day of March, 1961.

Sworn before me this
8th day of March, 1961.



B.C.L.S.


A Commissioner for taking oaths
within British Columbia

McWilliam, Whyte, Serle & Goble
British Columbia Land Surveyors

Ref. No. 61009