

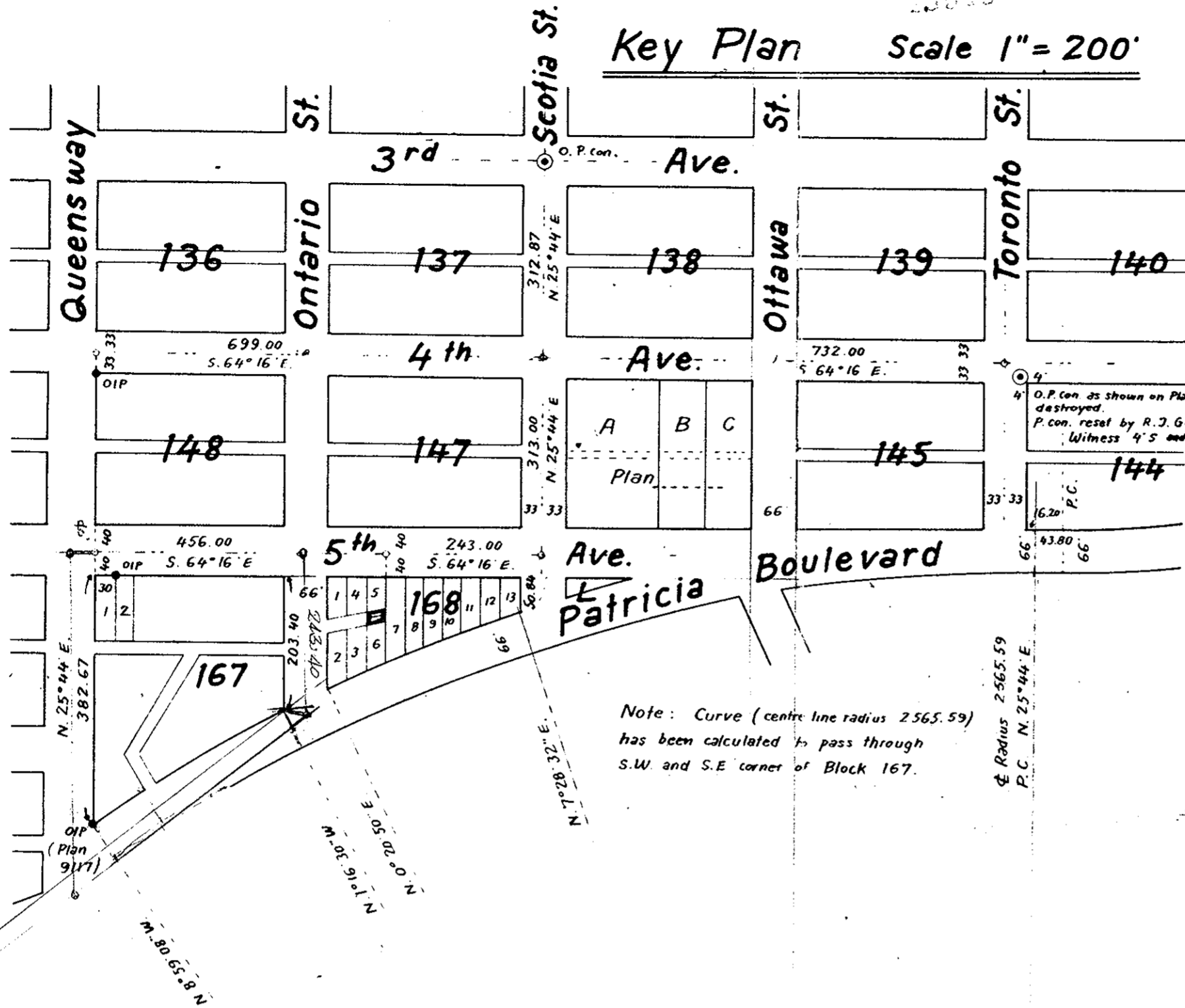
679.00
732.00
1331.00
782
1300
33
222
699.00

Key Plan Scale 1" = 200'

PLAN B-7522

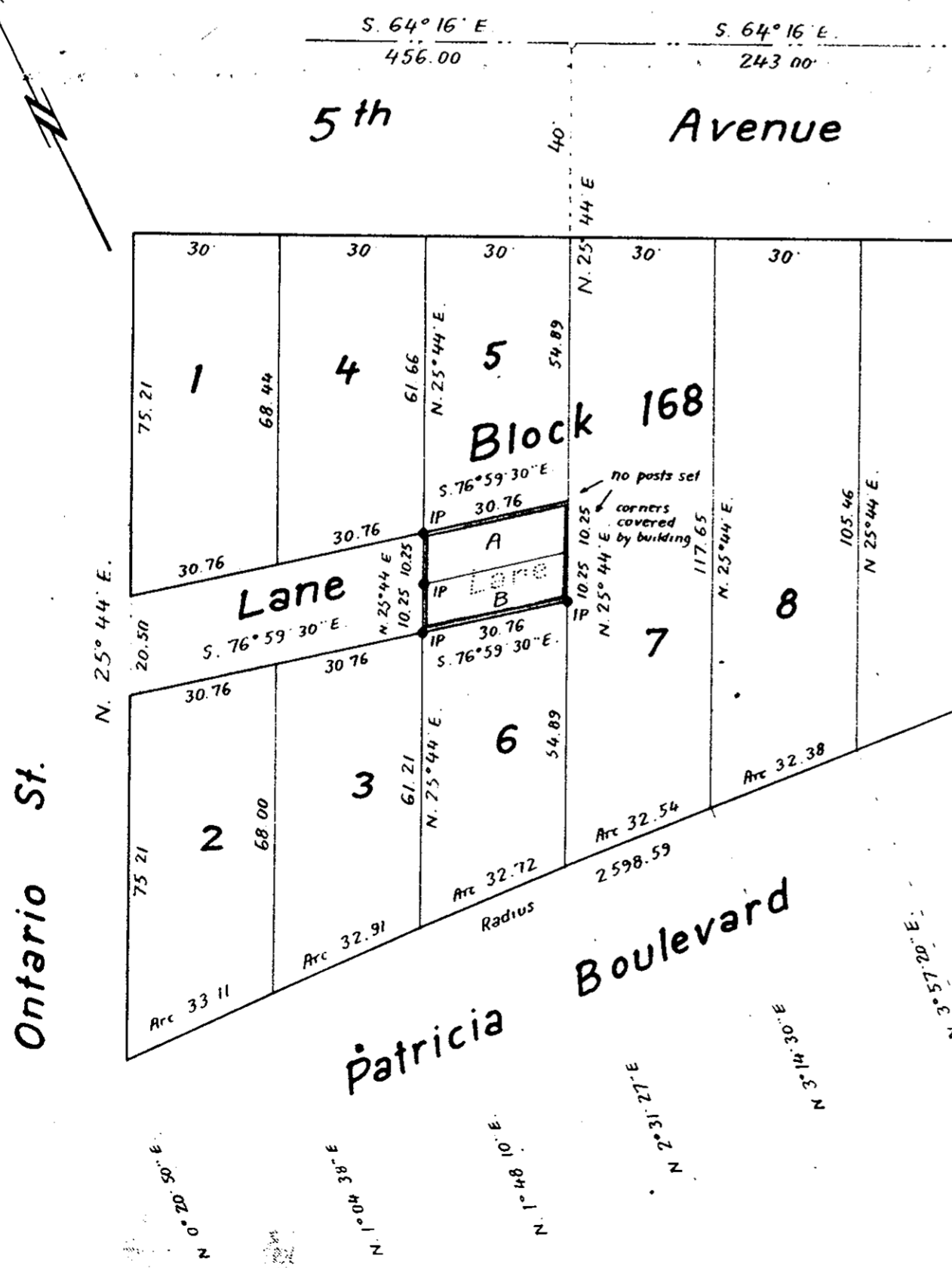
Deposited in the Land Registry
Office at Kamloops, B.C.
this 7th day of December 1960

Charles H. ...
Registrar



Note: Curve (centre line radius 2565.59) has been calculated to pass through S.W. and S.E. corner of Block 167.

Plan to Accompany By-Law No. 1372
City of Prince George, B.C.
Closing Part of the Lane in Block 168,
Plan 1268, District Lot 343, Cariboo District
Scale 1" = 30'



Legend

Bearings are astronomic and are derived from centre line of 4th Avenue as shown as S. 64° 16' E. on Plan 1268

- Old concrete monuments found shown O.P. con.
- Old iron posts found shown OIP
- Iron posts set shown IP

I, R. J. Goble, of the city of Prince George, British Columbia Land Surveyor, make oath and say that I was present at and did personally superintend the survey represented by this plan and that the survey and plan are correct. The said survey was completed on the 14th day of November, 1960.

R. J. Goble

B.C.L.S.

Sworn before me at the city of Prince George
this 14th day of November, 1960.

W. J. ...
A Commissioner for taking affidavits
within British Columbia

McWilliam - Whyte - Serle & Goble
British Columbia Land Surveyors

Ref. No. 60100 - J