

39638

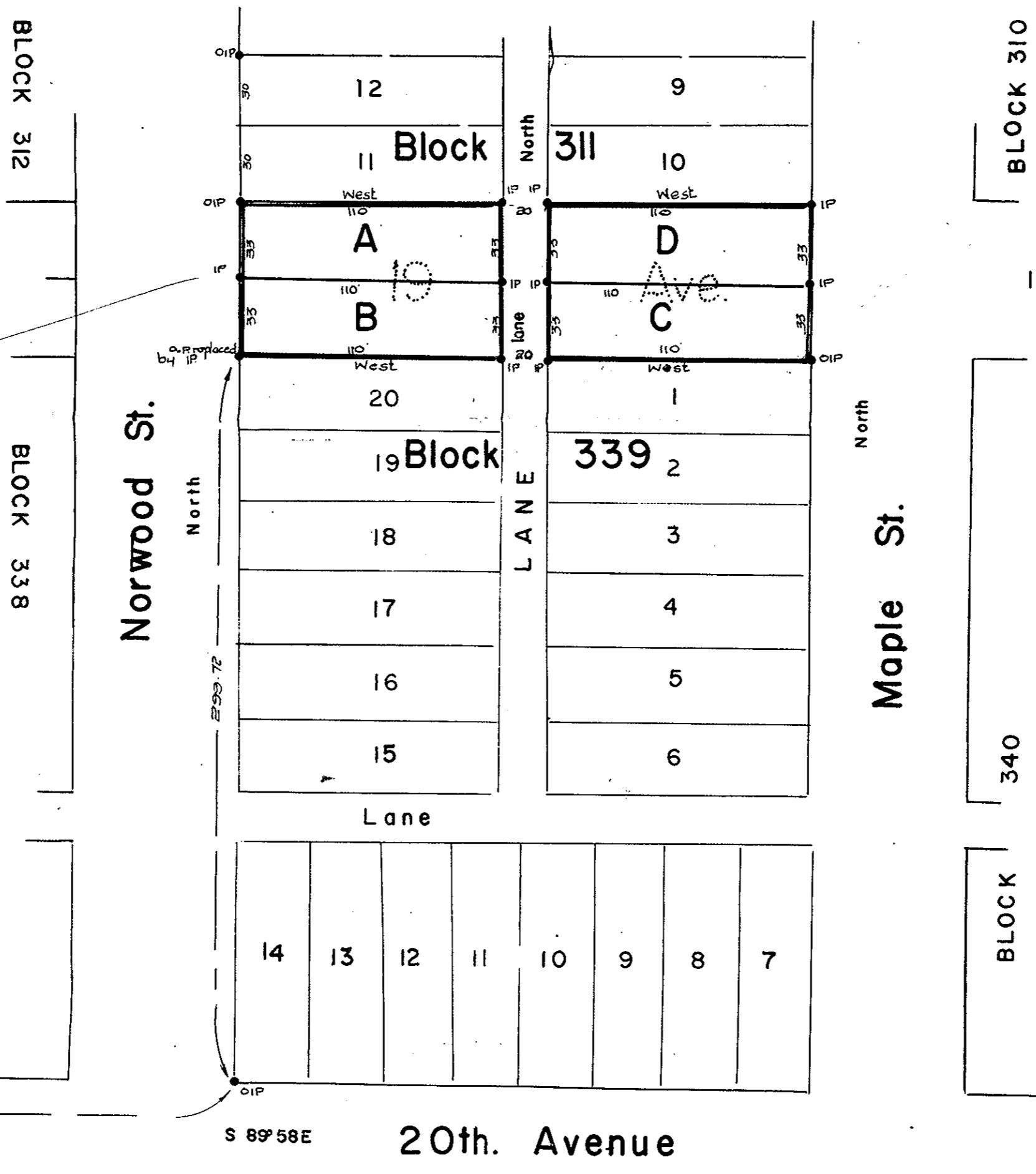
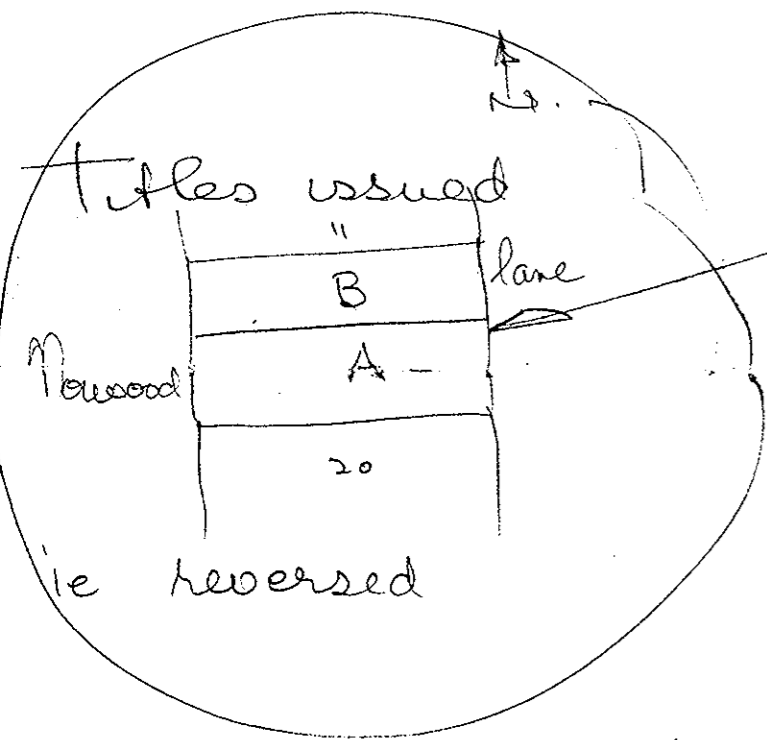
BY-LAW PLAN SHEWING PARTS
~~PLAN OF SUBDIVISION~~
OF 19th. Avenue- between Maple St.
and Norwood St.-adjoining Blocks
311 and 339 - DL. 343-Cariboo District
Plan No.1268 TO BE CLOSED

PLAN No. **B-7510**
 Deposited in the Land Registry Office at
 Kamloops B.C. this 18th day of Oct. 1960

[Signature]
 Registrar

SCALE : 50 ft. = 1 in.

CLOSING PART OF 19th. AVENUE, BY-LAW No.1331, 1960
 City of Prince George



Bearings are astronomic derived from
 Old Concrete Monument and old iron
 stakes along north boundary 20th. Ave.

Old concrete monument shown \odot OPCon
 Old iron stakes shown \bullet OIP
 Iron stakes set shown \bullet IP

Approved under the Land Registry Act
 this 25 day of July 1960

[Signature]
 Approving Officer - City of Prince George

I, J.A.F. Campbell of city of Prince George a
 British Columbia land surveyor make oath and say
 that I was present at and did personally superintend
 the survey represented by this plan and that the
 survey and plan are correct. The said survey was
 completed on the 20th. day of June 1960
 Sworn before me this 7th day of July 1960
[Signature]
 A Commissioner for taking affidavits
 within Prov. of B.C.