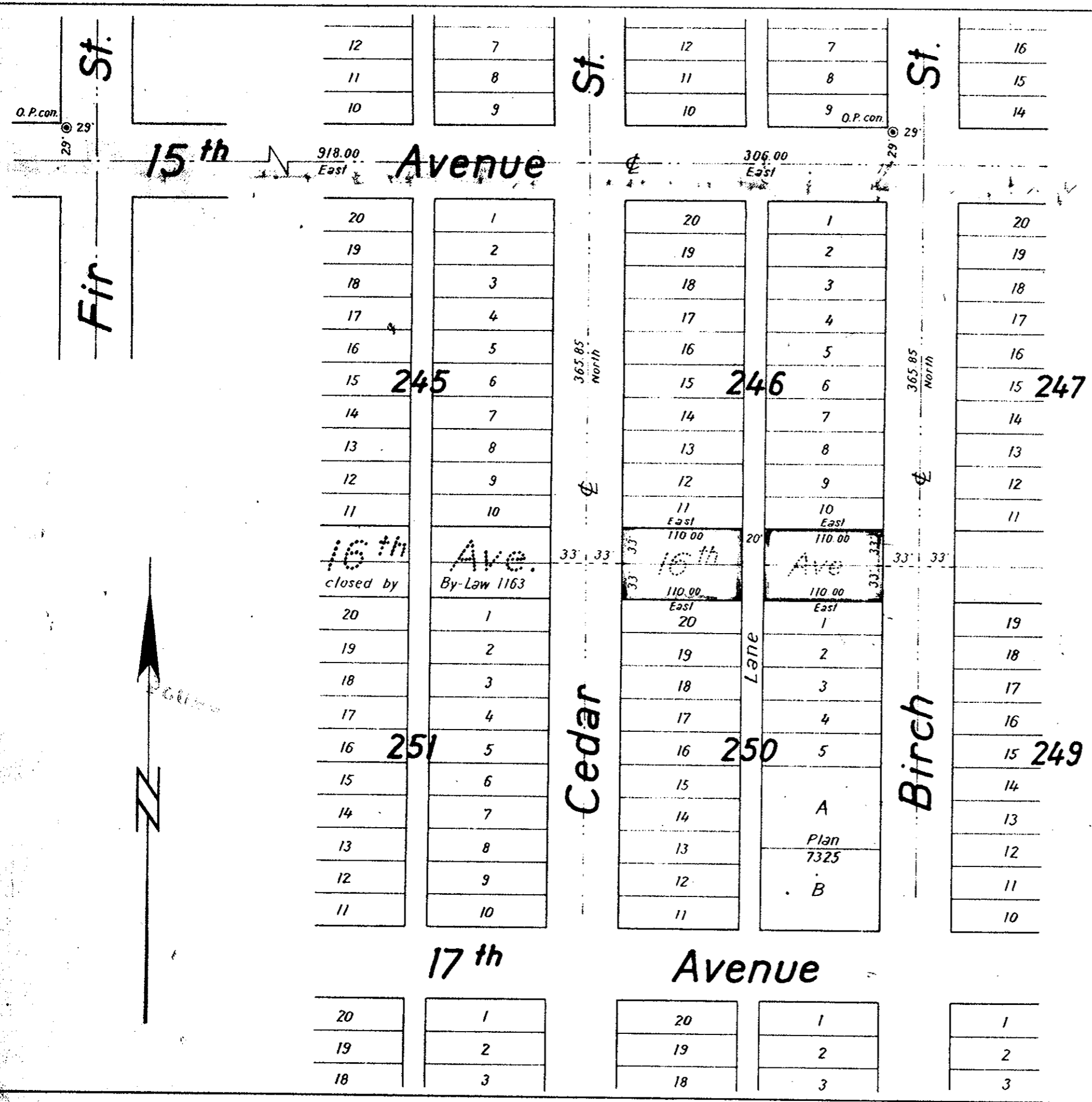


PLOTTED. KL

PLAN NO B. 7447
 DEPOSITED IN THE LAND REGISTRY
 OFFICE IN THE CITY OF VANCOUVER
 THIS 9th DAY OF MARCH 1959.



Plan to accompany By-Law No. 1075
 City of Prince George, B.C.
 Closing Part of 16th Avenue
 Plan 1268, District Lot 343
 Cariboo District

Scale 1" = 100'

Legend
 Bearings are astronomic and are derived
 From Plan 1268
 Old standard pipe posts in concrete found shown © O.P. con.

Certified Correct
 this 12th day of December 1958.

[Signature]
 B.C.L.S.

McWilliam - Whyte - Serle & Goble
 British Columbia Land Surveyors
 Ref. No. 58019-M