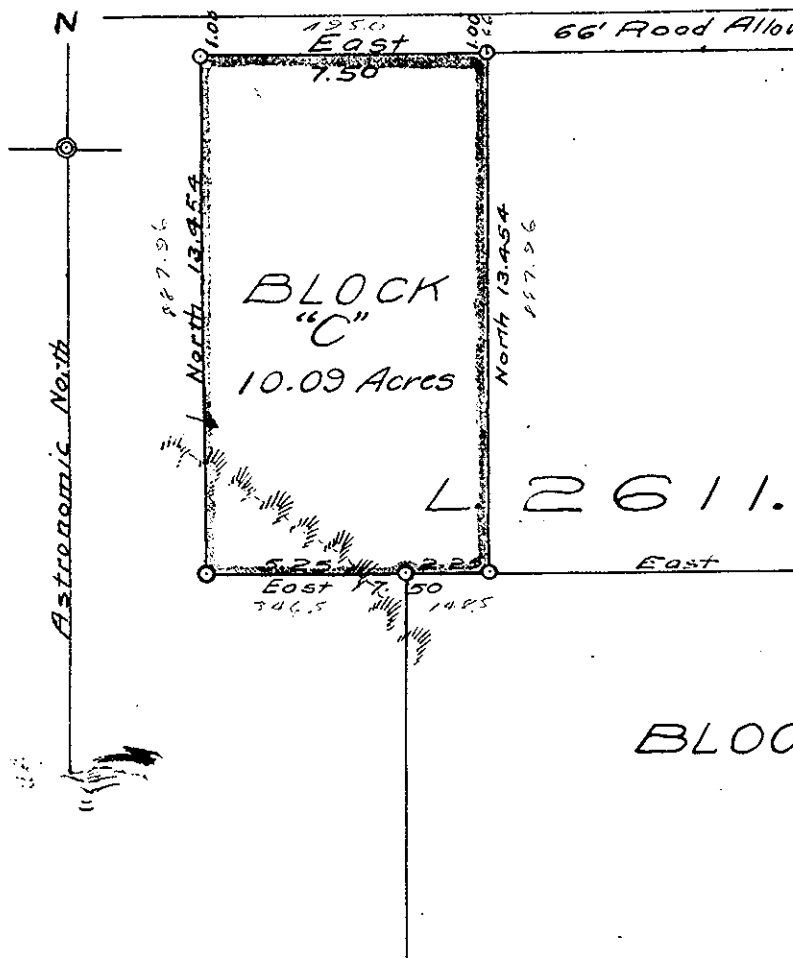


**BLOCK "C"**  
 being  
**PLAN OF SUBDIVISION**  
 of part of  
**L.2611.**

**CARIBOO DIST.**  
 Scale = 5 Chains = 1 inch.

Plan No. **B.3823.**  
 Deposited **22<sup>nd</sup> June, 1931.**  
*R. A. Braden*  
 Registrar.

Reg. Plan 1437, Kamloops L.R.D.



Legend:  
 Reg. - Registered  
 L.R.D. - Land Registry District  
 L. - Lot  
 Dist. - District

I, E.H. Burden of Prince George, British Columbia Land Surveyor  
 make oath and say that I was present at and did personally  
 superintend the survey represented by this plan, and that the  
 survey and plan are correct.

The said survey was completed on the 8<sup>th</sup> day of April, 1930.

*E.H. Burden*  
 B.C.L.S.

Sworn before me this 10<sup>th</sup> day of April,  
 1930.

Corners are defined on the ground by durable  
 wood posts.

Bearings are Astronomic and are derived  
 from the north boundary of Block "B."

Owner:

*McWiggill*