

SUBDIVISION PLAN
OF PART OF

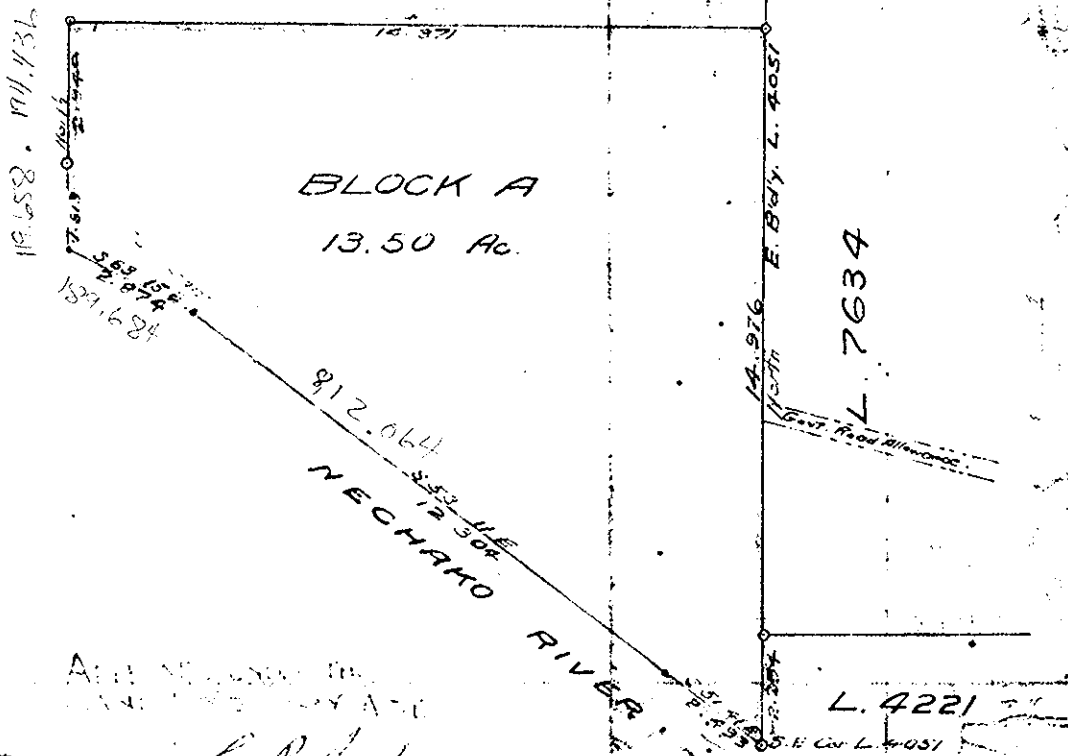
Plan No. B.3724.
Deposited 4th Nov., 1930.

LOT 4051
CARIBOO DISTRICT.
B.C.

Plans readen
Registration
7

SCALE: 4 CHS. TO 1 IN.

LOT 4051



I, F.P. Curden, British Columbia Land Surveyor,
make oath and say that I was present at and did
personally superintend the survey represented
by this plan and that the survey and plan are
correct. The said survey was completed on the
1st day of May 1922.
Sworn to before me
This 16th June 1922 } F.P. Curden
B.C.L.S.

Scale: 4 Chs. To 1 In.

Note
Bearings and distances on this plan were derived
from the field boundary map 4051.
Corners are marked on ground by wood posts.

Inspected April 3rd 1925
F.P. Curden.

APPT. PUBLIC WORKS ENGINEER
VICTORIA, B.C. NOV. 15th 1922
WITNESS
Revised APRIL 5th 1925
APPT. PUBLIC WORKS ENGINEER

2 1/2
14.371
66
86226
86226
948.446