

Plotted (G.G.) (H.G.)

Map No. B-2069.

Deposited January 10<sup>th</sup> 1925.

G. A. Nokes  
Registrar.

# PLAN SHOWING

## S. 1/2 OF THE N. E. 1/4 OF LOT 2003 CARIBOO DISTRICT, B.C.

SCALE: 5 CHAINS TO 1 INCH.

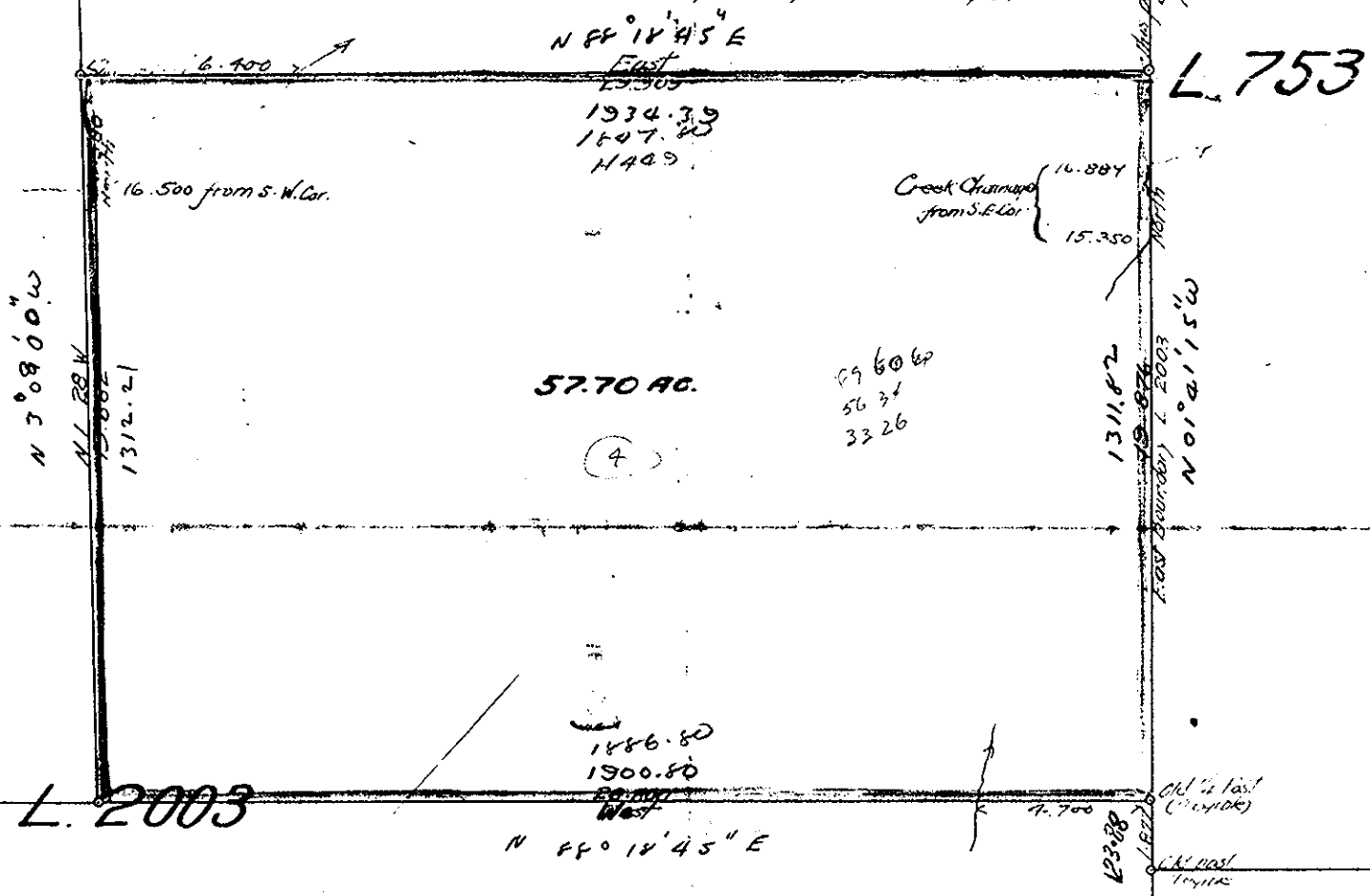
3.50 P.E.  
Old post  
(Illegible)

I, F.P. Burden, a British Columbia Land Surveyor, make oath and say that I was present at and did personally superintend the survey represented by this plan, and that the survey and plan are correct. The above survey was completed on the 10th day of September, 1924.

Sworn before me this }  
1<sup>st</sup> day of Sept 1924. } F.P. Burden, B.C.L.S.

*Murray*

Note: Bearings derived from East Boundary L. 2003, assuming same to be true North and South.  
Corners shown on plan marked on ground by 3"x3"x4" wood posts.



I hereby certify that this is a true copy of the Official Plan on file in the Land Department and numbered 17 Tube 242

*G. A. Nokes*  
Surveyor-General  
Victoria, B.C.  
Dec. 18th, 1924.