

# PLAN

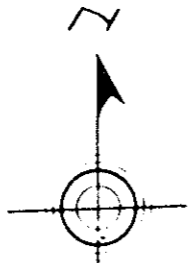
## PART OF LOT 6970

CARIBOO DIST.

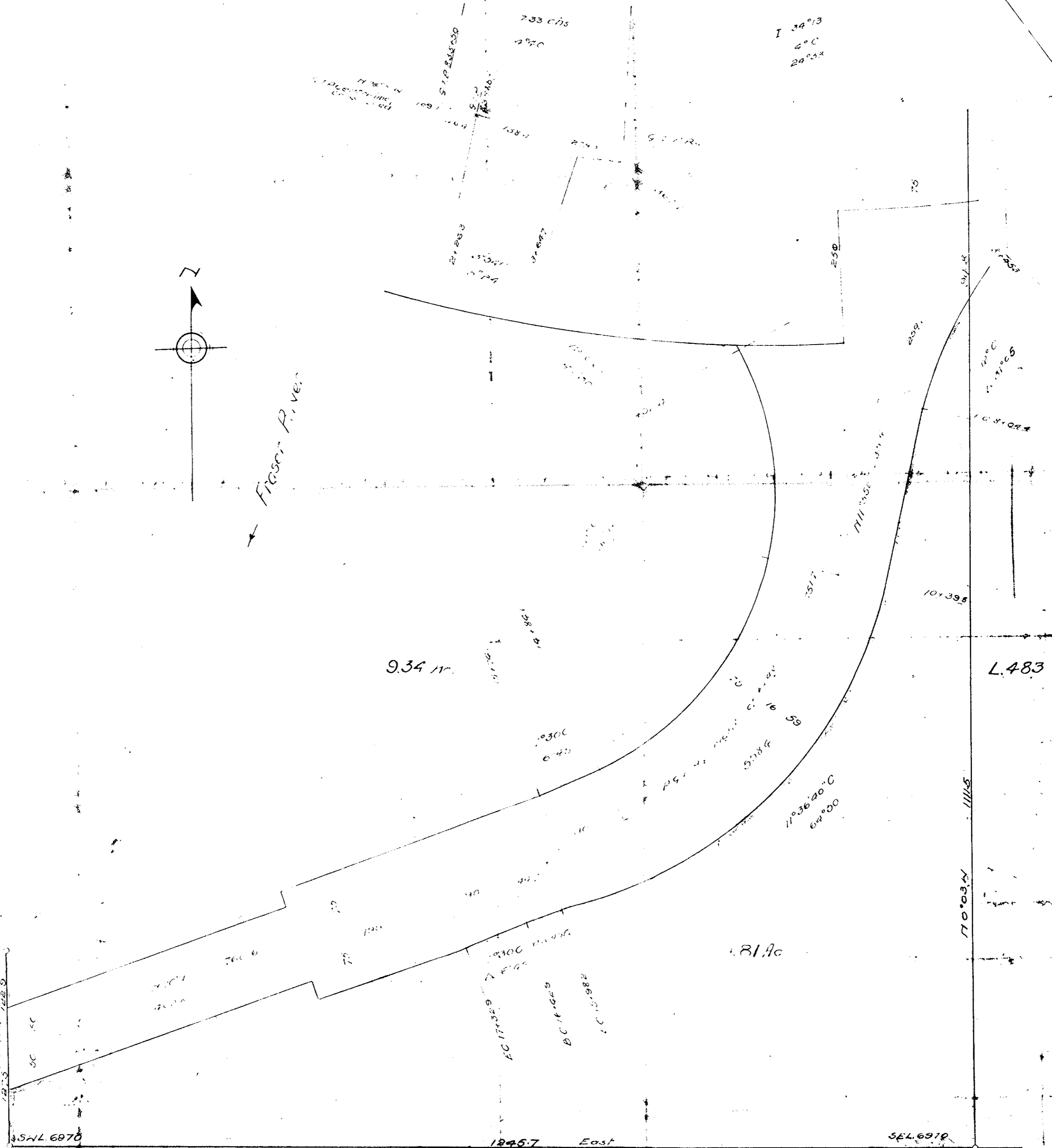
Scale 100ft = 1 inch

B.1237  
Mar 18/21  
Hickey

I 34°13  
4°0  
20°52



Flaser R. Ve.



bearings Astronomic  
 obtained from South  
 84° 0' 4" 1897

I, J. F. Campbell of the City of Vancouver  
 a B.C. Land Surveyor, make oath and say  
 that I was present at and did personally  
 supervise the survey represented by  
 this plan and that the survey was  
 completed on the 17th day of Dec. 1920

Subscribed before me  
 this 17th day of Dec 1920 } J. F. Campbell  
 J. F. Campbell  
 Notary Public

L.955

B-1520  
to  
B-1550