

ORIGINAL

PLOTTED (#100) *with H. S. L.*

Plan No. A-711.  
Deposited 21<sup>st</sup> Oct, 1929.

R. A. Braden  
Registrar

**CANADIAN NATIONAL RAILWAYS**  
GRAND TRUNK PACIFIC RAILWAY  
WESTERN REGION B.C. DISTRICT SMITHERS DIVN. NECHAKO SUBDN.

**PLAN**

showing RIGHT OF WAY required in Block "G"  
(OF D.L. 343)

CARIBOO DISTRICT  
BRITISH COLUMBIA

SCALE: 100' = 1"

*A. J. G. G.*  
GENERAL MANAGER

*S. H. G.*  
CHIEF ENGINEER

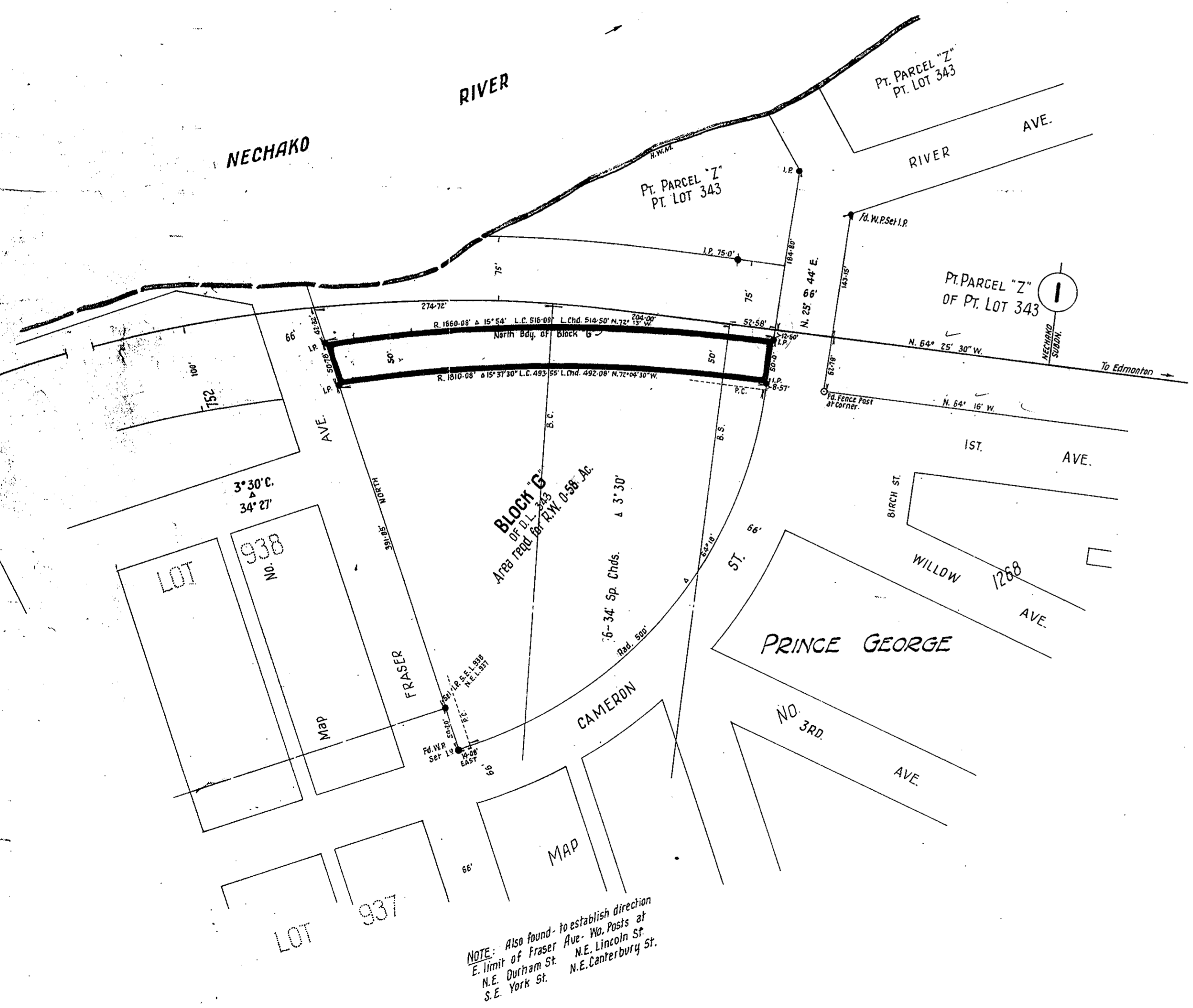
I, G. M. Christie, of the City of Vancouver, British Columbia  
Land Surveyor, make oath and say that I was present at, and  
did personally superintend the survey represented by this  
plan, and that the survey and plan are correct. The  
said survey was completed on the 22nd day of August, 1929.

SWORN before me at Vancouver, in  
the Province of British Columbia,  
this 27<sup>th</sup> day of September, 1929.

*A. R. MacLeod*  
A Notary Public in and for the  
Province of British Columbia.

NOTE  
Bearings are astronomical, and are derived from the Southerly  
limit of First Avenue, Map No. 1258.  
Iron posts set where shown thus: ● Posts found where shown thus: ○

LAND SURVEYS DEPT. C.N.R. VANCOUVER B.C.  
AUGUST 28TH, 1929 FIELD BOOK NO. 245 PLATED BY J.H.H.



NOTE: Also found - to establish direction  
E. limit of Fraser Ave. - No. Posts at  
N.E. Durham St. N.E. Lincoln St.  
S.E. York St. N.E. Canterbury St.