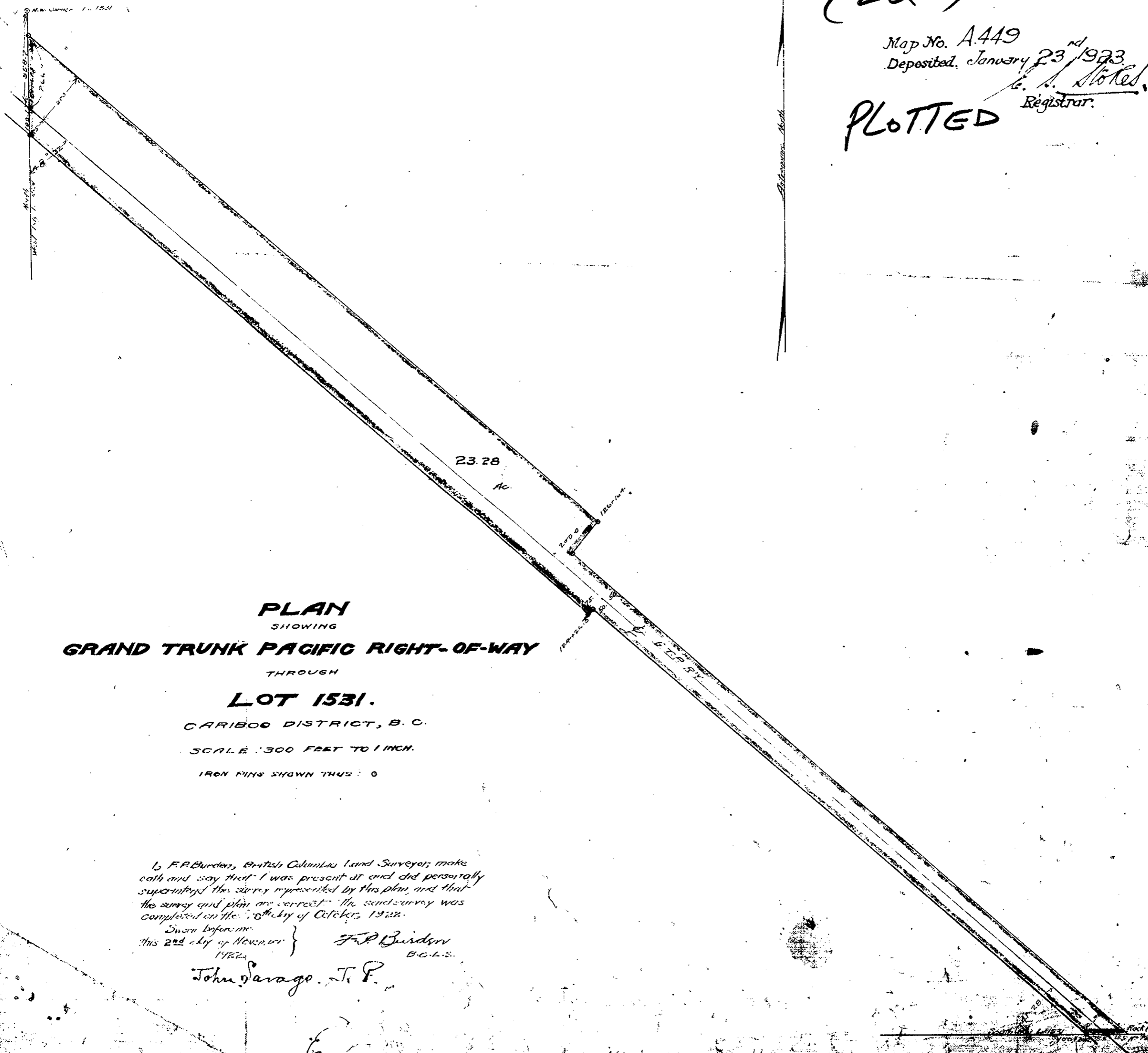


(EQ)

Map No. A.449
Deposited January 23rd 1923
G. A. Stokes
Registrar.

PLOTTED



PLAN
SHOWING
GRAND TRUNK PACIFIC RIGHT-OF-WAY

THROUGH
LOT 1531.
CARIBOO DISTRICT, B. C.
SCALE: 300 FEET TO 1 INCH.
IRON PINS SHOWN THUS: ○

I, F. P. Burdson, British Columbia Land Surveyor, make oath and say that I was present at and did personally supervise the survey represented by this plan, and that the survey and plan are correct. The said survey was completed on the 28th day of October, 1922.

Sworn before me
this 2nd day of November } F. P. Burdson
1922 } B.C.L.S.

John Savage, J. P.