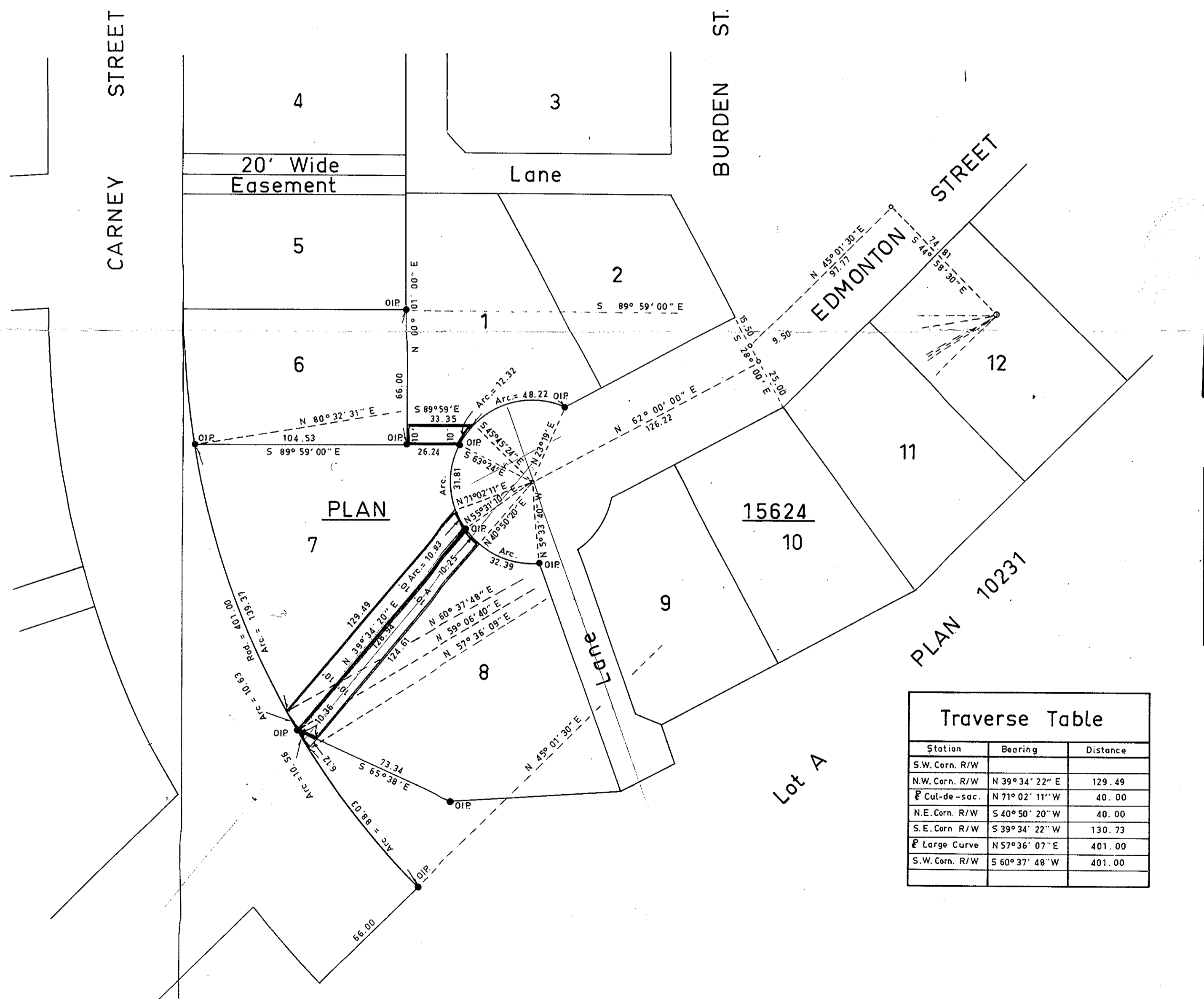


Plan of Right-of-Way
 Through
 Lots 1, 7 and 8, Plan 15624 and
 Lot A, Plan 10231, District Lot 343,
 CARIBOO DISTRICT.

Scale 1" = 40'

Registrar



- Legend
- Bearings are astronomic and are derived from Plan 15624.
- ⊙ Pcon. Standard Concrete Post.
 - ⊙ P Rock Standard Rock Post.
 - PP Standard Pipe Post.
 - I.P. Standard Iron Post.
 - P Wooden Post.
 - L.P. Lead Plug.
 - Denoting "Old"
 - WT. Denoting "Witness"

I, R.J. Goble, of the City of Prince George, British Columbia Land Surveyor, make oath and say that I was present at and did personally superintend the survey represented by this plan and that the survey and plan are correct.

The said survey was completed on the 4th day of February, 1966.

Sworn before me at Prince George this 25th day of Feb. 1966

[Signature]
 A Commissioner for taking of Oaths within British Columbia.

Station	Bearing	Distance
S.W. Corn. R/W		
N.W. Corn. R/W	N 39° 34' 22" E	129.49
E Cut-de-sac.	N 71° 02' 11" W	40.00
N.E. Corn. R/W	S 40° 50' 20" W	40.00
S.E. Corn. R/W	S 39° 34' 22" W	130.73
E Large Curve	N 57° 36' 07" E	401.00
S.W. Corn. R/W	S 60° 37' 48" W	401.00

LEGAL DESCRIPTION	AREA in Sq. Feet
PLAN 15624, D.L. 343	
Lot 1	288.
Lot 7	1292.
Lot 8	1268.
Lot A, PLAN 10231 D.L. 343	31.