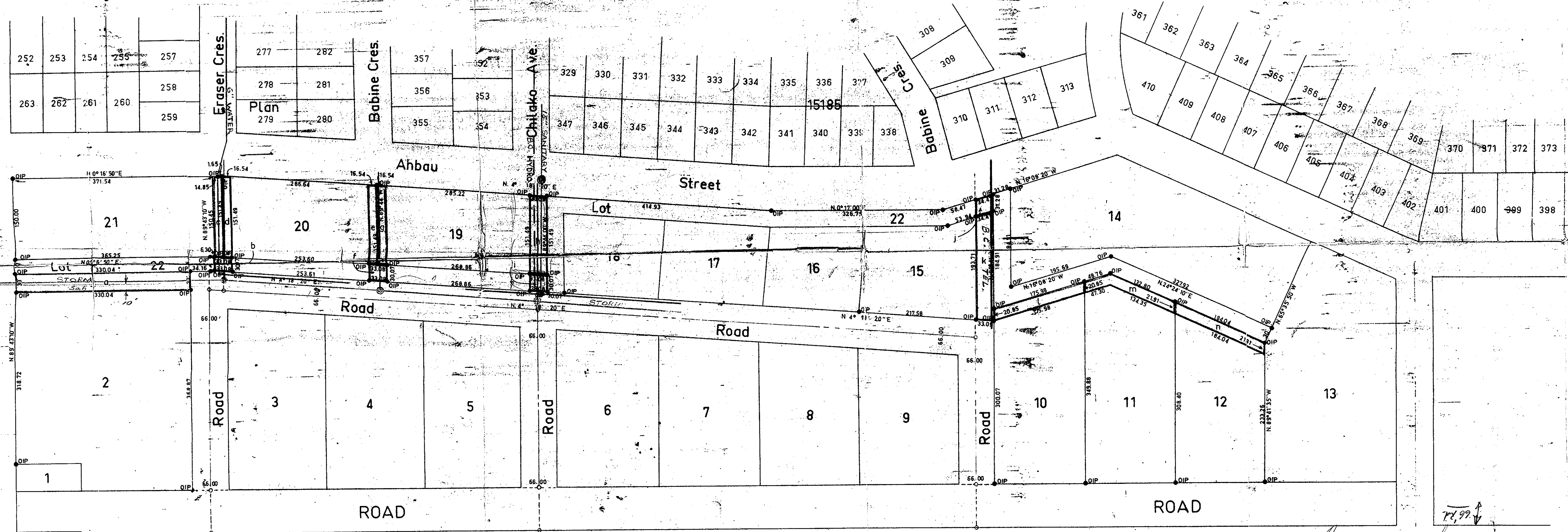


Registrar

BOOK OF REFERENCE		
R/W	Area (sq ft)	Lot
a	10,891	2
b	992	22
c	2,491	21
d	2,499	20
e	2,499	20
f	992	22
g	2,499	19
h	4,998	19
i	992	22
j	1,032	22
k	6,591	15
l	3,519	10
m	3,632	11
n	3,681	12

PLAN OF RIGHT OF WAY THROUGH
 LOTS 2, 10, 11, 12, 15, 19, 20, 21 AND
 22, PLAN 15557 DISTRICT LOT 936,
 CARIBOO DISTRICT

Scale: 1 inch = 100 feet



LEGEND

Bearings are astronomic and are derived from S. Bdy. Plan 15185 as N. 89° 43' 10" W
 Old iron posts found, shown OIP

I, R. J. Goble, of the city of Prince George, British Columbia, Land Surveyor, make oath and say that I was present at and did personally superintend the survey represented by this plan and that the survey and plan are correct.
 The said survey was completed on the 16th day of August, 1965.

R. J. Goble
 B.C.L.S.

Sworn before me at Prince George this 16th day of August, 1965.

Commissioner
 A Commissioner for taking affidavits within British Columbia

The Seal of the Corporation of the City of Prince George was affixed hereto in the presence of

Mayor
 Mayor

Acting Clerk
 Acting Clerk

Central Street

Plan H-700

