

PLAN SHOWING EASEMENT FOR  
SEWAGE PURPOSES THROUGH  
LOT 37, PLAN 14430  
DISTRICT LOT 625  
AND LOT 1, PLAN 14664  
DISTRICT LOTS 624 & 625  
CARIBOO DISTRICT - BRITISH COLUMBIA  
SCALE: 1" = 100'

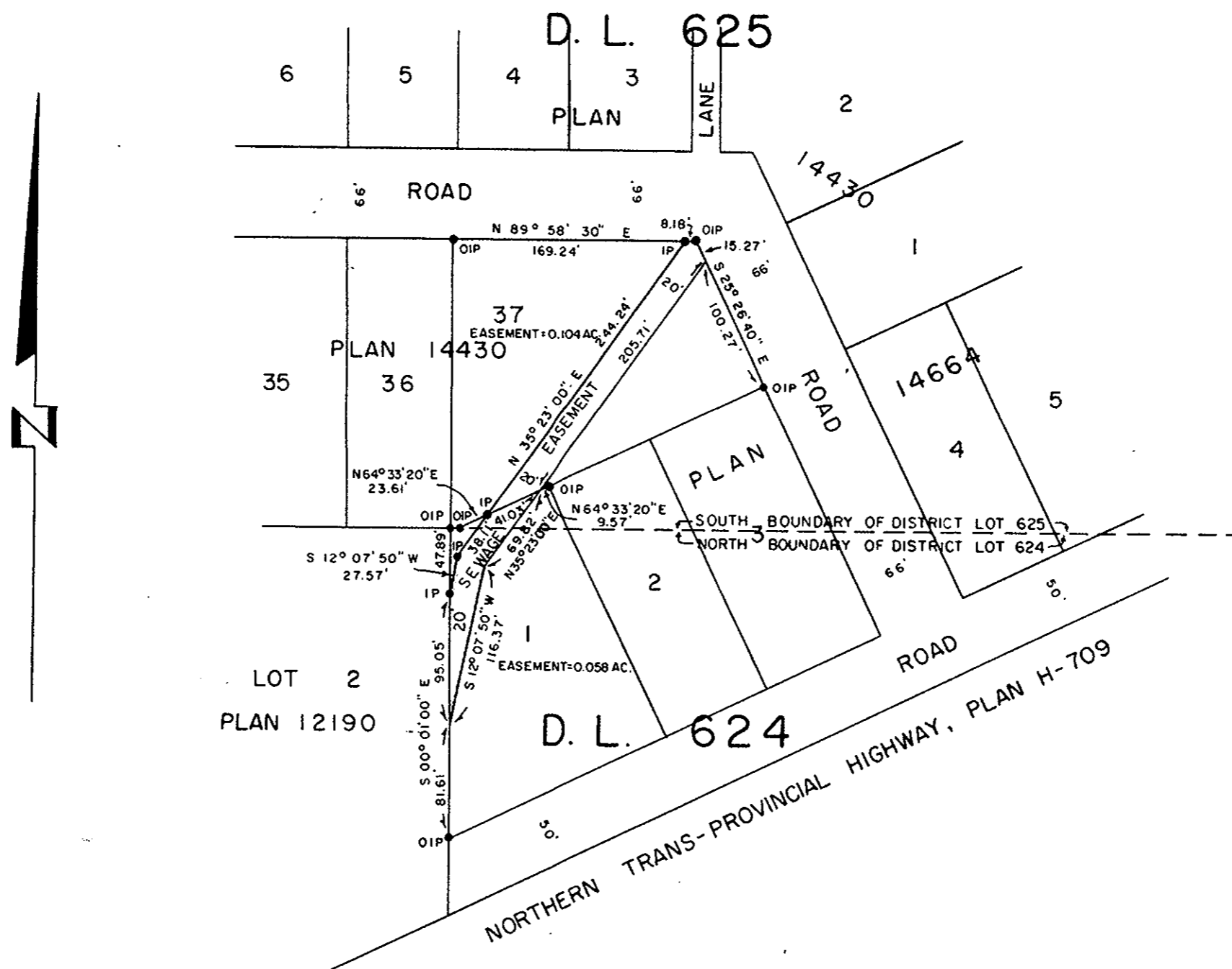
PLAN No. **A 2785**

Deposited in the Land Registry  
Office at Kamloops, B.C. this  
29th day of SEPTEMBER, 1965.

*[Signature]*  
Registrar

NOTE: Easement for sewage purposes is shown  
outlined in red.  
Bearings are astronomic, derived from the  
north boundary of Lot 37, Plan 14430,  
District Lot 625.

LEGEND: ● OIP denotes an old iron pin found.  
● IP denotes an iron pin placed on this survey.



I, DONALD A. DUFFY, of the City of Prince George, a  
British Columbia Land Surveyor, make oath and say  
that I was present at and did personally superintend  
the survey represented by this plan and that the survey  
and plan are correct. The said survey was completed  
on the 11th day of December, 1964.

*[Signature]*  
B.C.L.S.

Sworn before me this 29th  
day of January, 1965.

*[Signature]*  
A Commissioner for taking Affidavits  
within the Province of British Columbia.

Prince George Developments Ltd.

*[Signature]* Director  
*[Signature]* Director.

TRUST COMPANY  
Commonwealth Savings Plan Ltd

*[Signature]*

W. D. USHER & ASSOCIATES  
LAND SURVEYORS  
PRINCE GEORGE - B. C.  
X-37 1578