

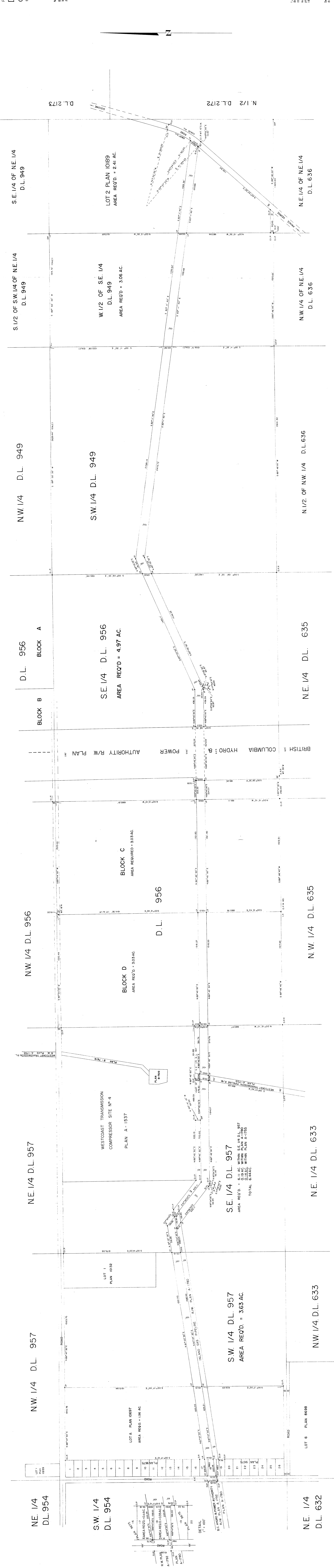
PLAN OF RIGHT-OF-WAY THROUGH
 DISTRICT LOTS 957, 956 & 949
 CARIBOO DISTRICT - BRITISH COLUMBIA
 SCALE 1" = 200'

NOTE:
 Bearings are astronomic, derived from the North
 Magnetic Meridian and National Gas Pipeline (N.G.P.)
 Plan A-1780.
 LEGEND:
 O.P. denotes an old wooden post found.
 I.P. denotes an iron pin placed on this survey.
 M.C. denotes a mound.
 S. denotes a section.
 W. denotes a well.

PARCEL	BOOK OF REFERENCE	AREA REQUIRED (Acres)
LOT 7, PLAN 9675, D.L. 957		0.11
LOT 18, PLAN 9675, D.L. 957		0.35
LOT A, PLAN 10697, D.L. 957		1.96
S.W. 1/4 D.L. 957		3.63
S.E. 1/4 D.L. 957		6.11 EXCLUDING LAND WITHIN 0.19 AC. WITHIN PLAN A-1750 6.24 TOTAL
BLOCK D, D.L. 956		3.03
BLOCK C, D.L. 956		3.03
S.E. 1/4 D.L. 956		4.97
W. 1/2 OF S.E. 1/4 D.L. 949		3.06
LOT 2, PLAN 10689, D.L. 949		2.41

I, DONALD A. DUFFY, of the City of Prince George, do hereby certify that I was present at and did personally supervise the survey represented by this plan and that the survey was completed on the 18th day of December, 1962.
 DONALD A. DUFFY
 Registered Professional Surveyor
 B.C.S.S.

Sworn before me this 18th day of December, 1962.
 J. J. McLELLAN
 Notary Public
 A Commissioner for Taking Affidavits
 within the Province of British Columbia



NE. 1/4 D.L. 957
 AREA REQ'D. = 6.11 AC. WITHIN S.E. 1/4 D.L. 957
 0.11 AC. WITHIN PLAN A-1750
 TOTAL 6.44 AC.

S.W. 1/4 D.L. 957
 AREA REQ'D. = 3.63 AC.

NE. 1/4 D.L. 633
 NW 1/4 D.L. 633

NW 1/4 D.L. 956
 D.L. 956
 BLOCK A
 BLOCK B
 BLOCK C
 BLOCK D
 AREA REQ'D. = 3.03 AC.

SE 1/4 D.L. 956
 AREA REQ'D. = 4.97 AC.

NW 1/4 D.L. 949
 D.L. 949
 S.W. 1/4 OF NE. 1/4 D.L. 949
 AREA REQ'D. = 2.41 AC.

W. 1/2 OF SE. 1/4 D.L. 949
 AREA REQ'D. = 3.06 AC.

NE. 1/4 OF NE. 1/4 D.L. 636
 D.L. 636
 N.W. 1/4 OF NE. 1/4 D.L. 636
 D.L. 636

LOT 1, PLAN 10132

LOT 8, PLAN 8698

LOT 1, PLAN 10697
 AREA REQ'D. = 1.96 AC.

LOT 2, PLAN 10689
 AREA REQ'D. = 2.41 AC.

WESTCOAST TRANSMISSION COMPRESSOR SITE No. 4
 PLAN A-1537
 PLAN B-7519

COLUMBIA HYDRO POWER AUTHORITY R/W PLAN

ROAD

DETAIL
 B.C. HYDRO & POWER AUTHORITY R/W PLAN A-1750
 1" = 100'