

Plan of Right-of-Way through  
 District Lot 2062  
 Cariboo District  
 Scale: 1 inch = 100 feet

Plotted (LN)(LM)  
 Plan No A2661

Deposited in the Land Registry Office at Kamloops, B.C.  
 this 2 day of Dec 1964

*[Signature]*  
 Registrar

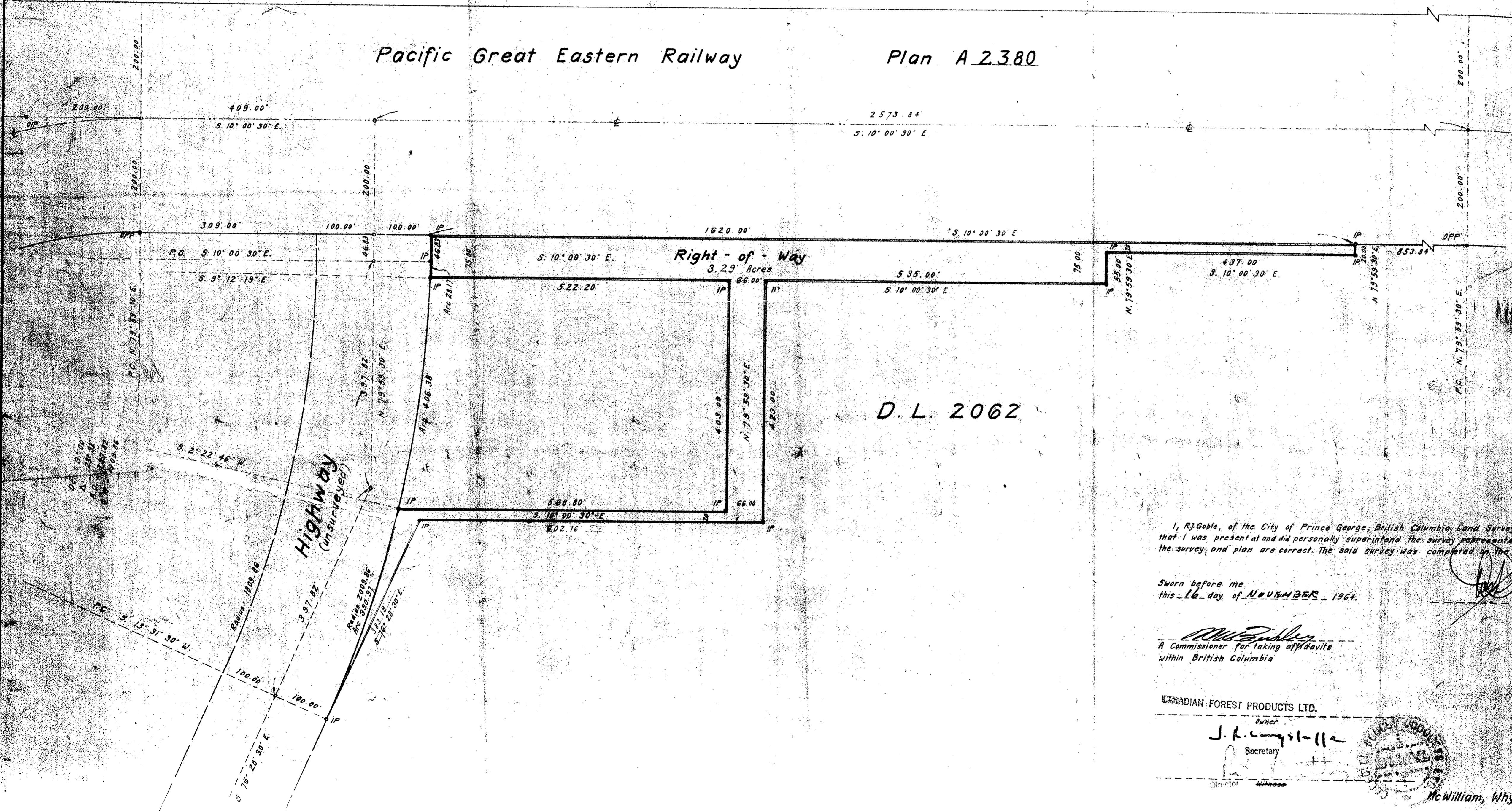
Legend

Bearings are astronomic and are derived from  
 OPP's on the West bdy. of P.G.E. Plan A-2380.

- Old pipe post found, shown • OPP
- Old iron post found, shown • OIP
- Iron post set, shown • IP

Pacific Great Eastern Railway

Plan A 2380



D.L. 2062

I, R.J. Goble, of the City of Prince George, British Columbia Land Surveyor, make affidavit that I was present at and did personally superintend the survey represented by this plan and that the survey and plan are correct. The said survey was completed on the 15th day of August 1964.

Sworn before me  
 this 16 day of NOVEMBER 1964.

*[Signature]*  
 A Commissioner for taking affidavits  
 within British Columbia

CANADIAN FOREST PRODUCTS LTD.

J. R. Campbell  
 Secretary

Director



McWilliam, Whyte, Serle & Goble

British Columbia Land Surveyors  
 1636 5th Ave, Prince George, B.C.

Plan No. 61281