

**PLAN OF RIGHT OF WAY REQUIRED BY
PACIFIC GREAT EASTERN RAILWAY COMPANY
THROUGH DISTRICT LOT 2062
CARIBOO DISTRICT, B.C.**

PLAN
PLOTTED (LN)(LM)
Deposited in the Land Registry
at Kamloops, B.C., this 21st day of
DEC 1962.

Robert Stewart
REGISTERED

SCALE: 1 IN. = 200 FT.
LEGEND

Bearings are Astronomic derived from Stellar Observations
Reference Meridian is through Sta. 'O'
1/2"x1/2"x30" galv. iron post set is shown thus ● IP
Standard pipe post set is shown thus ● PP
Old iron survey post found is shown thus ● OIP
Old bearing tree found is shown thus ● OBT
Centreline chainage along curves is on 100ft. chords & fractions thereof.
Mile posts are shown as found and are not necessarily one mile apart

AREA OF RIGHT OF WAY
PACIFIC GREAT EASTERN RAILWAY

LOT	DESCRIPTION	AREA
2062		55.68 AC.

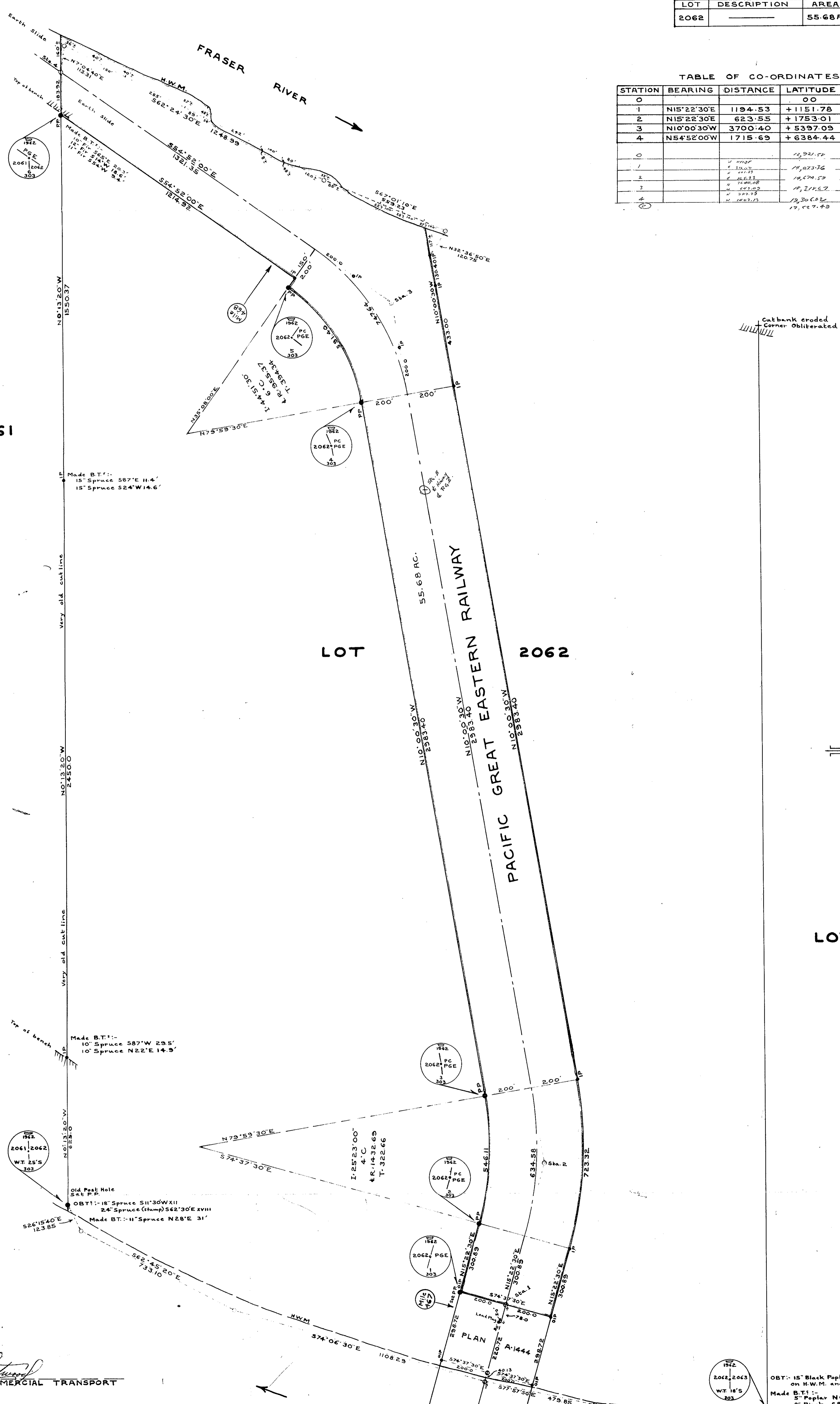
TABLE OF CO-ORDINATES

STATION	BEARING	DISTANCE	LATITUDE	DEPARTURE
0			00	00
1	N15°22'30"E	1194.53	+1151.78	+316.72
2	N15°22'30"E	623.55	+1753.01	+482.05
3	N10°00'30"W	3700.40	+5397.09	-161.04
4	N54°52'00"W	1715.69	+6384.44	-1564.17
0			12,321.74	24,767.70
1			17,973.36	24,614.42
2			14,274.59	24,703.75
3			18,274.57	24,206.66
4			12,300.92	22,403.53
			17,227.43	23,421.23

LOT 2061

LOT 2062

LOT 2063



SANCTIONED:
Robert Stewart
MINISTER OF COMMERCIAL TRANSPORT

OBT: 15" Black Poplar S34°E XXIV
on H.W.M. and leaving toward the River
Made B.T.:
5" Poplar N6°W 72'
8" Birch S89°W 14.3'
Set PP