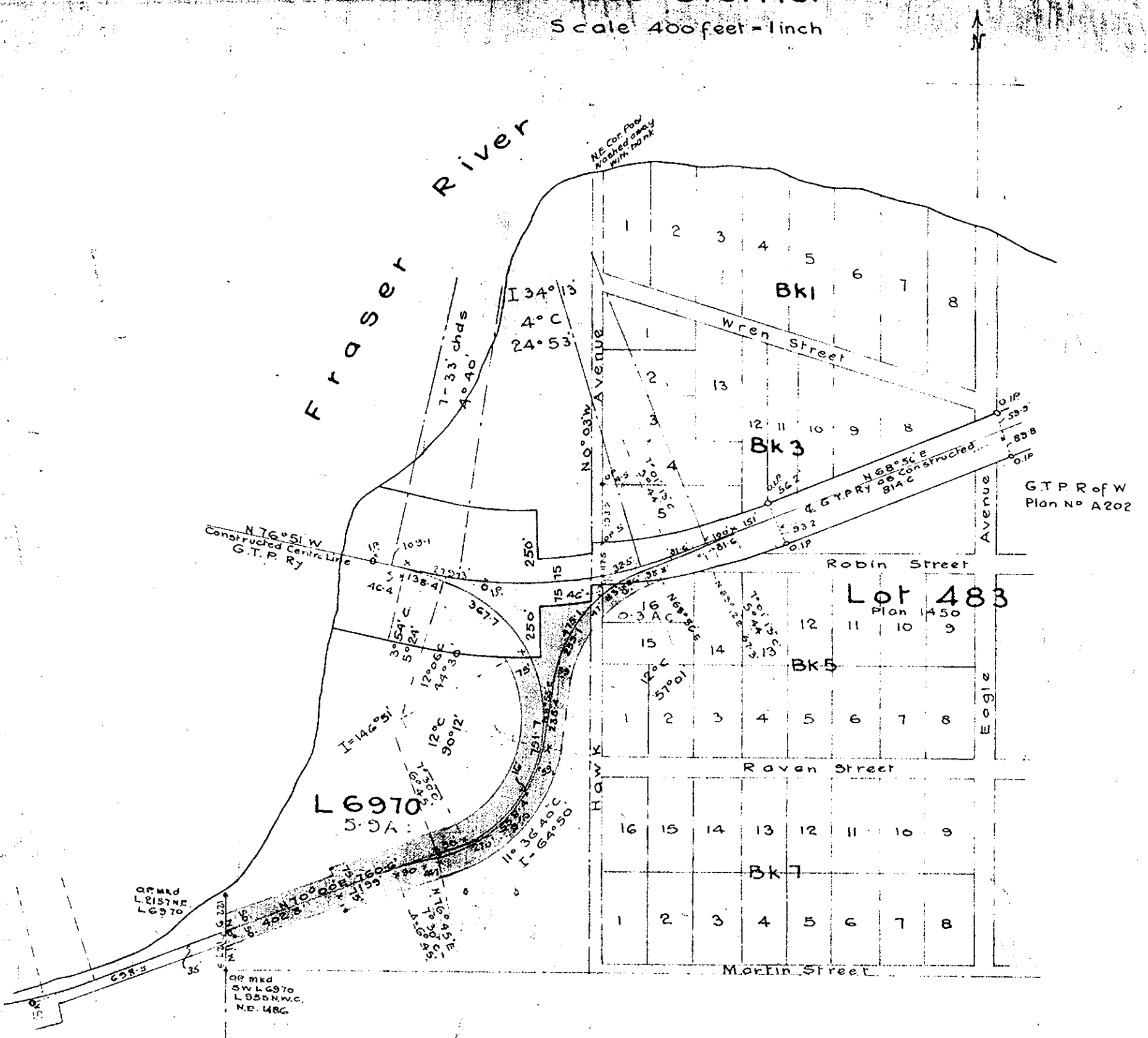


A.232
Feb. 20th 1917

Plan showing
PACIFIC GREAT EASTERN RLY.
Right of Way
through D.Ls. 6970 & 483
Cariboo District
Scale 400 feet = 1 inch



L.2157

I, Charles W Williams of the City of Vancouver, British Columbia, Surveyor, make Oath and say that I was present at and did personally superintend the survey represented by this plan and that the survey and plan are correct. The said survey was completed on the 6th day of July 1916. Sworn before me this 12th day of Feb'y. 1917

Charles W Williams

G.S. Shuster

in and for the Province of British Columbia